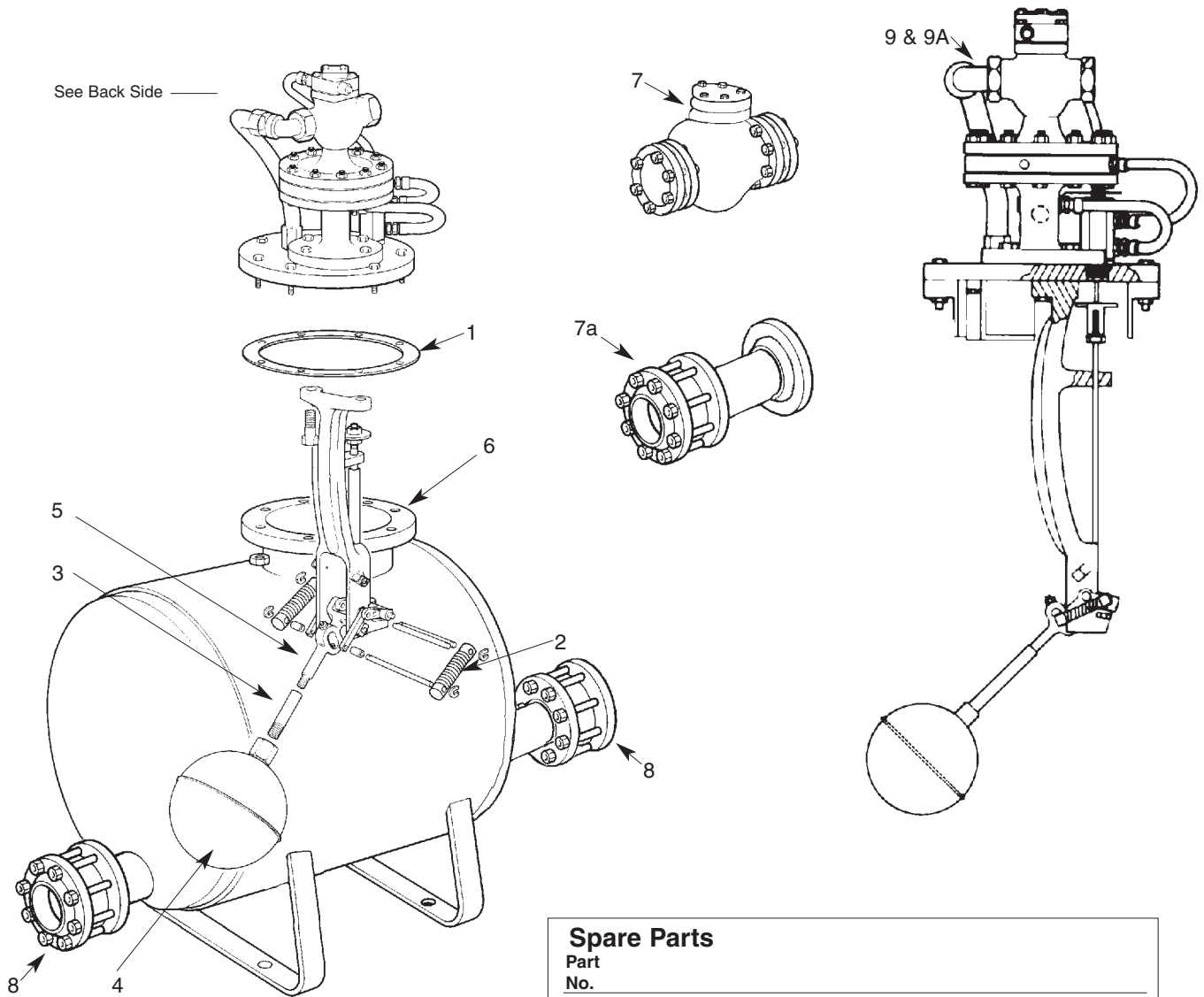


# spirax sarco®

## Spare Parts for High Capacity Pressure Powered Pump™ 4" PPF-P

See Back Side —



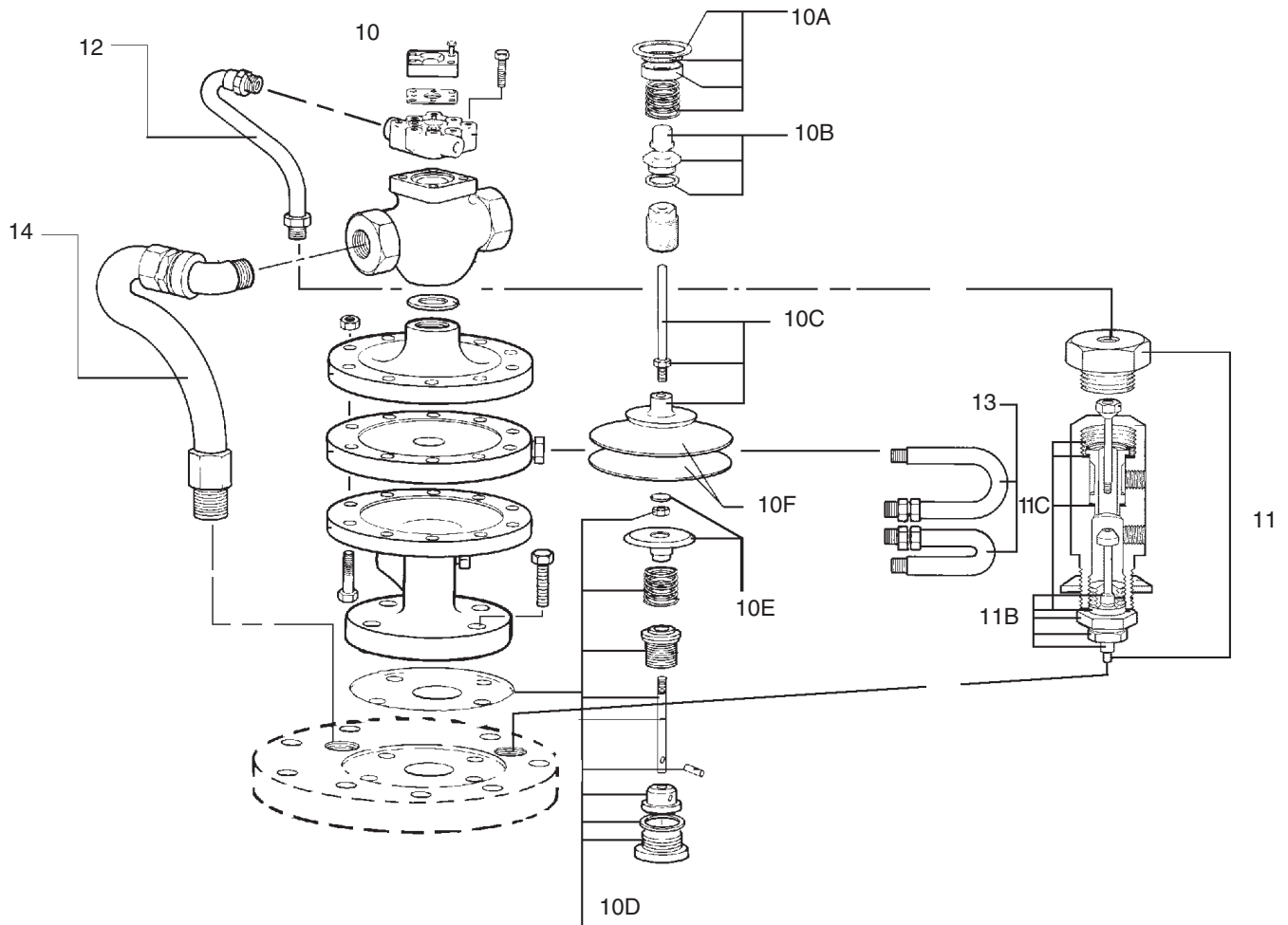
### Spare Parts

Part No.	Description
1	Cover Gasket
2	Spring Assembly
3	Float Arm Extension
4	Float
5	Float Arm
6	Push Rod Repair Kit
7	4" Inlet Swing Check Valve (old style)
7a	4" SDCV4 + Flange Spool (replacement assembly for old style)
8	4" Check Valve Assembly with Studs (new style from datecode CO2)
9	Cover Mechanism/Valve Assembly Complete 36" Diameter Body
9A	Cover Mechanism/Valve Assembly Complete 30" Body

Local regulation may restrict the use of this product below the conditions quoted. Limiting conditions refer to standard connections only.  
In the interests of development and improvement of the product, we reserve the right to change the specification.

TI-5-221-US 11.07

# High Capacity Pressure Powered Pump™ 4" PPF-P



## Spare Parts

Part No.	Description
10	Main Valve Assembly
10A	Screen & Spring Kit for Inlet Valve
10B	Head & Seat Assembly with Gasket for Inlet Valve
10C	Diaphragm Plate & Stem Kit for Inlet Valve
10D	Head & Seat Assembly for Exhaust Valve
10E	Diaphragm Plate for Exhaust Valve
10F	Diaphragm Kit for Main Valve
	Gasket Kit for Main Valve (not Shown)
11	Pilot Valve Assembly
11B	Packing Gland Kit for Pilot Valve
11C	Gasket Kit for Pilot Valve
12	1/4" Flex Metal Hose Kit
13	3/8" Flex Metal Hose Kit
14	1-1/2" Flex Metal Hose Kit

© Spirax Sarco, Inc. 2007

TI-5-221-US 11.07