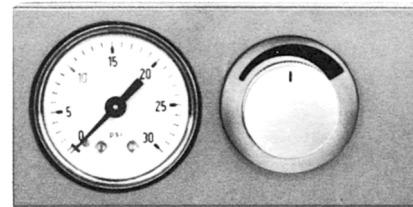




## Manual Loading Station Type 354

**Type 354 manual loading station** is used for remotely positioning pneumatic control valves or other control elements and for remote pneumatic adjustment of the set point of automatic controllers. It consists of a non-bleed high accuracy pressure regulator having a very stable output signal and provided with an adjusting knob. A 2" dial pressure gauge indicates the output pressure.



### GENERAL SPECIFICATION

TYPE OF INSTRUMENT	manual loading station
AMBIENT TEMPERATURE LIMITS	maximum +65°C    minimum -15°C
COMPRESSED AIR SUPPLY	20 psig (1.4 bar) or 35 psig (2.4 bar)
OUTPUT SIGNAL	3 to 15 psi (0.2 to 1 bar) or 6 to 30 psi (0.4 to 2 bar)
PNEUMATIC CONNECTIONS	for air supply and output signal: 1/4" NPT female
FRONT PANEL	modular type, die cast aluminium with olive grey enamel finish
MOUNTING	flush panel
WEIGHT	about 0.6 kg
DIMENSIONS	96 x 48 mm (see drawings)
IDENTIFICATION CODE NUMER	7.837.1254.000

**DIMENSIONS (mm)**

