

spirax sarco

Auto-Manual Station Type 361 Installation and Maintenance Instructions

INSTALLATION

Type 361 auto-manual stations are provided with two pillars (11) and two auxiliary fixing plates (12) for simple panel mounting (see part list on the back of sheet). After installation of the auto-manual station on panel, provide for pneumatic piping by utilizing air connections (1/4" NPT female) fitted on the back of station and identified by the following letters: **E**, air supply; **R**, control output signal from controller; **V**, pneumatic valve; **I**, integral action bellows (i.e. connection "I" or connection "Air integral" on the controller) to be utilized only for PI and PID control instruments.

When controller is proportional action only, connection "I" has to be shut off with a 1/4" plug.

It is strongly recommended to check for perfect airtightness of connections and fittings on the control signal pneumatic line with water soap solution or special spray compounds.

Air supply must be filtered, clean, dry and oil free, at 20 psig (1.4 bar) pressure: maximum 35 psig (2.4 bar).

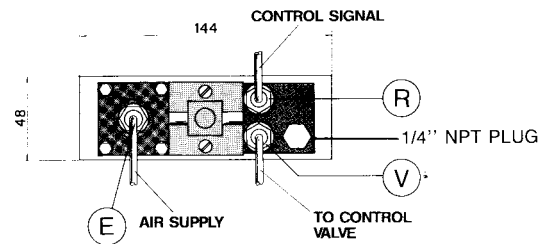
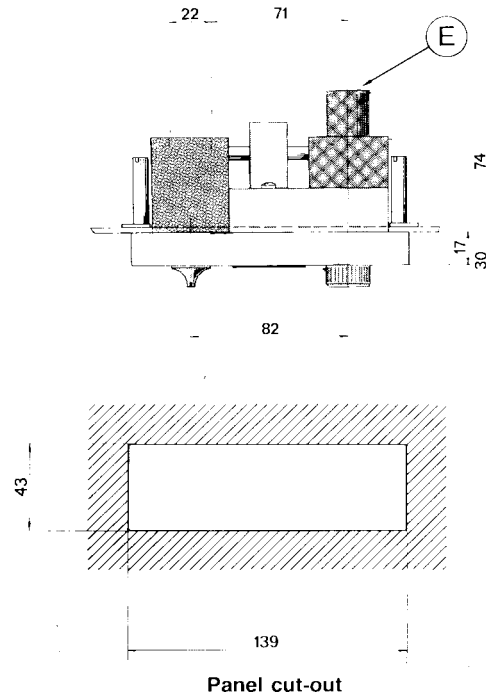
MAINTENANCE

Type 361 stations do not require special maintenance. **Replacement of manometer (17)** is accomplished by unscrewing two screws (8) which fix manometer holding plate (16) and unscrewing manometer itself.

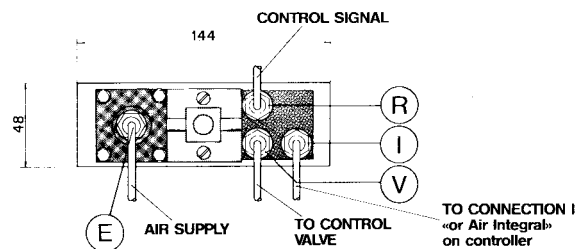
Before reassembling with a new manometer, make sure that O-ring (15) has been properly positioned in its seat. In case there is an abnormal operation of the pressure regulator due to air leakage with output signal constantly low, **replace diaphragm assembly (5)** as follows:

- rotate counterclockwise adjusting knob (14) up to its stop

- loosen the four screws (1)
- disassemble plate (4) and plate (2) from base (13) without damaging connection (10)
- separate plate (4) from plate (2), removediaphragm assembly (5) and replace it with a new one
- reassemble now unit making sure that springs (3 and 6) are correctly positioned in their seats and side holes of plate (4), of plate (2) and of diaphragm assembly (5) are aligned with each other.




Auto-manual station fitted to proportional controller



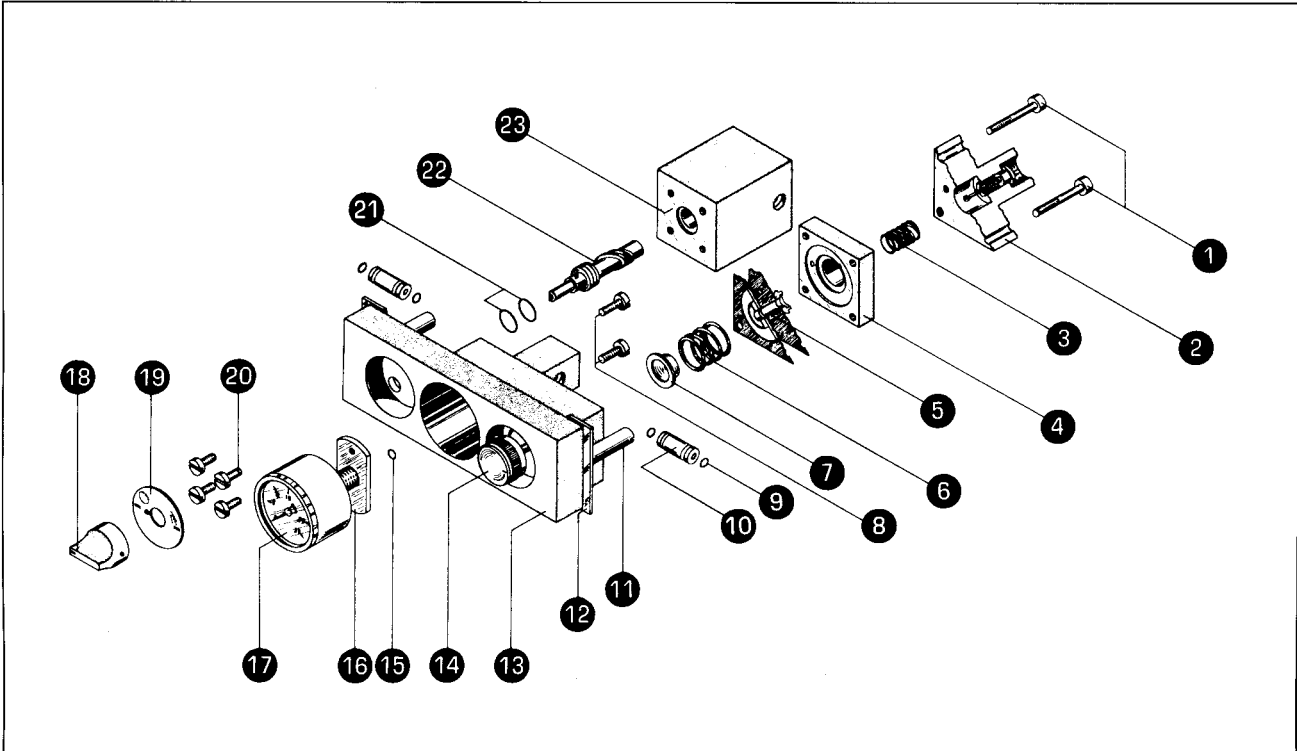
Auto-manual station fitted to proportional-integral controller

Occasional replacement of O-ring (21) or alternatively of whole distributor (22) can be carried out as per following procedure:

- by means of a suitable 1.5 mm size key remove small socket head screws of switch knob (18) and take this out
- loosen screws of name plate (19) and remove it
- loosen four screws (20) and taking care not to damage connector (10) remove switch block (23) from base (13)
- at this stage it is now possible to take out distributor

- (22) from its housing and proceed to replace it or alternatively O-rings (21) only
- take this opportunity to check O-rings (9) and to replace them if needed
- reassemble now distributor (22) on block (23) and this on base (13)
- rotate distributor counterclockwise up to its stop
- fit again nameplate (19) and then reassemble knob (18) making sure that it is correctly oriented with its reference index on position "automatic" marked with symbol  .

PART LIST



1	Screw M4 x 35	9	O-ring	17	Manometer
2	Upper plate	10	Air connector	18	Switch knob
3	Valve spring	11	Mounting pillar	19	Nameplate
4	Intermediate plate	12	Fixing plate	20	Screw M4 x 10
5	Diaphragm assembly	13	Base	21	O-ring
6	Loading spring	14	Pressure adjusting knob	22	Distributor
7	Spring guide	15	O-ring	23	Switch block
8	Screw M4 x 10	16	Manometer holding plate		

RECOMMENDED SPARE PARTS

Description	Part list	Ordering code
Diaphragm assembly	Part 5 - 9 - 15	3.837.4750.151
Manometer set	Part 15 - 17	3.837.4750.154

REPAIR

Please contact our nearest Branch Office or Agent, or directly Spirax-Sarco S.r.l.
Via Pasubio, 8 - Cernusco sul Naviglio (MI) - ITALY - Tel.: +39 02 92 11 95 11 - Fax: +39 02 924 03 21

LOSS OF GUARANTEE

Total or partial disregard of above instructions Involves loss of any right to guarantee.