



Cert. No. LRQ 0963008

ISO 9001

spirax sarco

TI-P076-17
ST Issue 2

SMC32F and SMC32YF Carbon Steel

Integrally Flanged Bimetallic Steam Traps

Description

The SMC32F and SMC32YF are carbon steel maintainable bimetallic steam traps having integrally flanged straight connections.

The SMC32F has an integral flat strainer screen and the SMC32YF has an integral, cylindrical Y-type strainer. All pressure bearing components are produced by TÜV approved suppliers in accordance with AD-Merkblatt WO/TRD100.

Standards

This product fully complies with the requirements of the European Pressure Equipment Directive 97/23/EC.

Certification

This product is available with certification to EN 10204 3.1. **Note:** All certification/inspection requirements must be stated at the time of order placement.

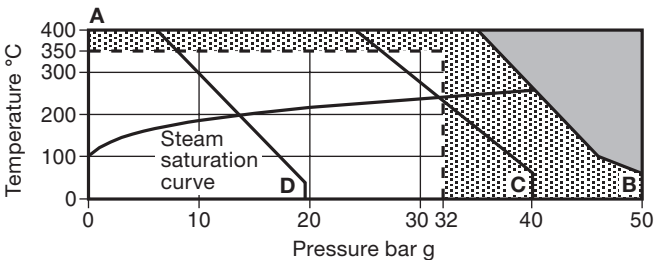
Sizes and pipe connections

DN15, DN20 and DN25

Standard flanges: EN 1092 PN40, ASME (ANSI) B16.5 Class 150 or ASME (ANSI) B16.5 Class 300.

For other connections please consult Spirax Sarco.

Pressure/temperature limits (ISO 6552)



The product **must not** be used in this region.

The product should not be used in this region or beyond its operating range as damage to the internals may occur.

A - B Flanged ASME (ANSI) 300.

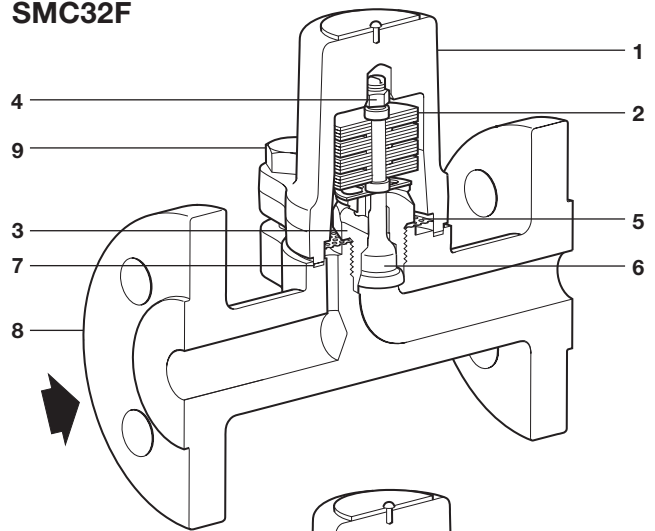
A - C Flanged EN 1092 PN40.

A - D Flanged ASME (ANSI) 150.

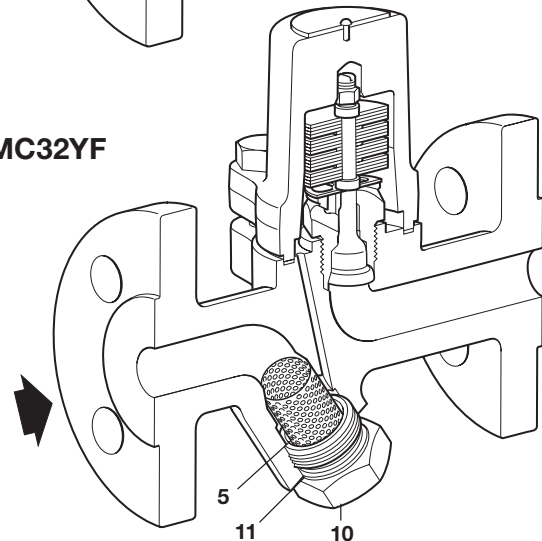
Body design conditions	ASME (ANSI) 300
PMA Maximum allowable pressure	50 bar g @ 50°C
TMA Maximum allowable temperature	400°C @ 35 bar g
Minimum allowable temperature	-60°C
PMO Maximum operating pressure for saturated steam service	32 bar g @ 350°C
TMO Maximum operating temperature	350°C @ 32 bar g
Minimum operating temperature	0°C

Note: For lower operating temperatures consult Spirax Sarco
Designed for a maximum cold hydraulic test pressure of 75 bar g

SMC32F



SMC32YF



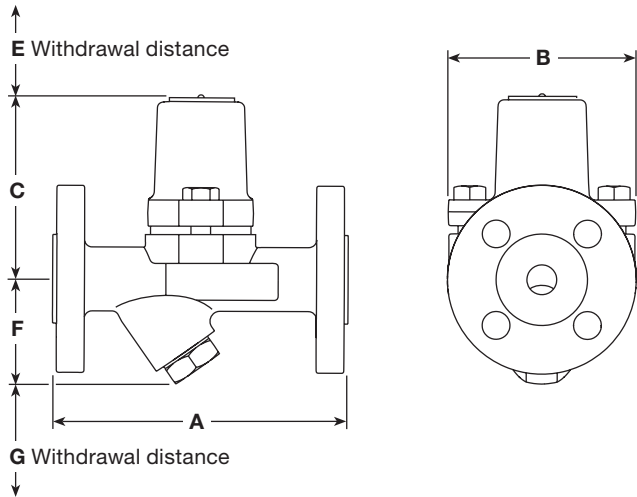
Materials

No.	Part	Material
1	Cover	Carbon steel DIN 17243 C22.8 (W/S 1.0460) ASTM A105N
2	Bimetallic element	Corrosion resistant bimetal and stainless steel Rau Type H46
3	Valve seat	Stainless steel BS 970 431 S29
4	Locking nut	Stainless steel
5	Strainer screen	Stainless steel AISI 304
6	Valve	Stainless steel
7	Cover gasket	Stainless steel reinforced exfoliated graphite
8	Body	Carbon steel 1.0619+N/ASTM A216 WCB
9	Cover bolts	Stainless steel (M10 x 30) A2 - 70
10	Strainer cap	Carbon steel DIN 17243 C22.8 (W/S 1.0460) ASTM A105N
11	Strainer cap gasket	Stainless steel BS 1449 304 S16

Dimensions/weights (approximate) in mm and kg

SMC32F

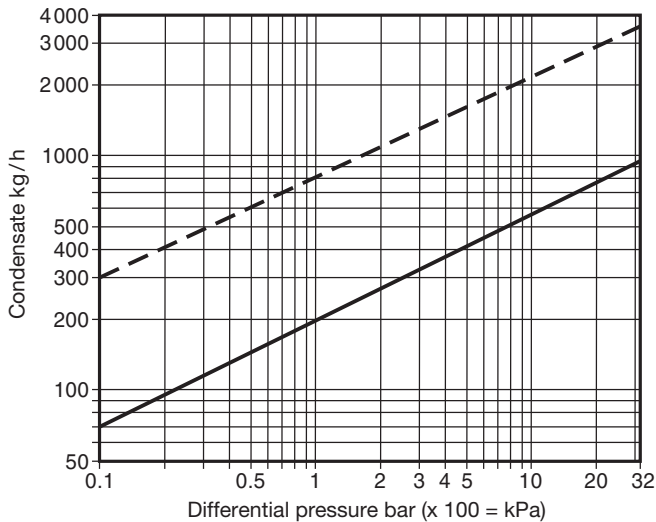
Size	A	B	C	E	F	G	Weight
DN15	150	94	92	51	-	-	3.1
DN20	150	94	92	51	-	-	3.7
DN25	160	94	92	51	-	-	4.4



SMC32YF

Size	A	B	C	E	F	G	Weight
DN15	150	94	92	51	55	28	3.3
DN20	150	94	92	51	56	28	4.0
DN25	160	94	92	51	58	28	4.7

Capacities



Hot water capacity ————— Cold water capacity - - - - -

Safety information, installation and maintenance

For full details see the Installation and Maintenance Instructions (IM-P076-09) supplied with the product.

Installation note: The SMC32F and SMC32YF are designed for installation in any position, horizontal or vertical.

It is recommended that a non-return valve is fitted when discharging condensate into return lines where backpressure is experienced. It is also recommended that a diffuser is fitted when discharging to atmosphere.

Increased backpressure will reduce the temperature of condensate discharge. For further information consult Spirax Sarco. For ease and maintenance, consideration should be given to fitting isolation valves upstream and downstream of the steam trap.

Disposal

These products are recyclable. No ecological hazard is anticipated with the disposal of these products, providing due care is taken.

How to order

Example: 1 off Spirax Sarco DN50 SMC32F carbon steel bodied maintainable bimetallic steam trap having flanged EN 1092 PN40 connections and an integral strainer screen.

Spare parts

The spare parts available are shown in solid outline. Parts drawn in broken line are not supplied as spares.

Available spares

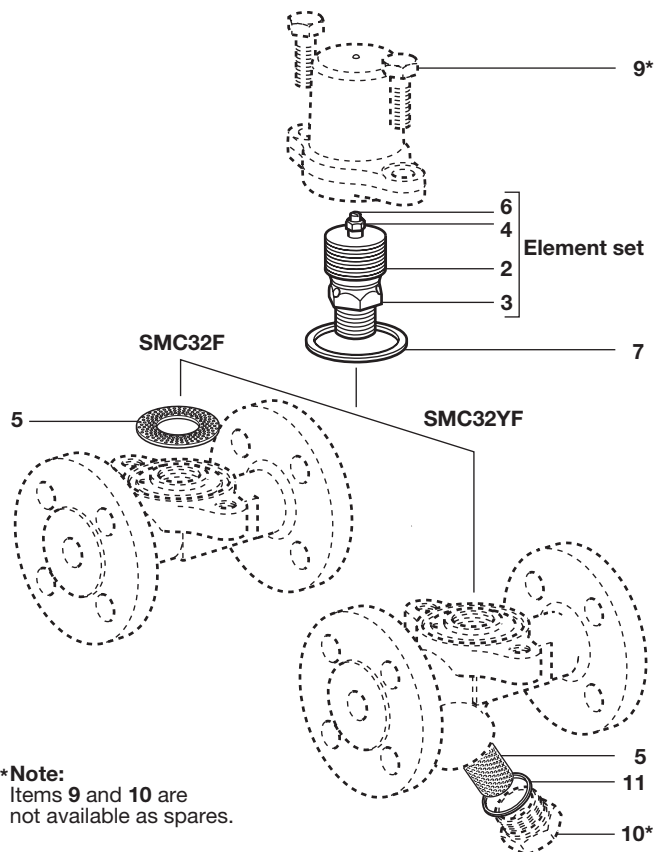
Element set		2, 3, 4, 6
Strainer screen	SMC32F (3 off)	5
Strainer screen and gasket	SMC32YF (1 off)	5, 11
Set of cover gaskets	(packet of 3)	7
Strainer cap gasket	(packet of 3)	11

How to order spares

Always order spares by using the description given in the column headed 'Available spares' and state the size and type of trap.

Warning: Do not dismantle the element set by removing the locking nut (4) or the setting of the trap will be affected.

Example: 1 - Element set for a Spirax Sarco DN25 SMC32F bimetallic steam trap.



Recommended tightening torques

Item	Part	or mm	N m
3	Valve seat	24 A/F	115 - 125
9	Cover bolts	16 A/F M10 x 30	23 - 27
10	Strainer cap	27 A/F	120 - 135