

spirax sarco®

FTS14

Austenitic Stainless Steel Float & Thermostatic Steam Trap

Description

The FTS14 is an austenitic stainless steel float and thermostatic steam trap with an integral automatic air vent.

It provides efficient condensate drainage and prompt air removal to ensure process equipment operates to its maximum potential.

As standard the FTS14 has horizontal connections with flow from right to left (R-L). However its unique design allows the cover to be simply rotated to provide horizontal left to right (L-R) and vertical up or vertical down configurations.

Sizes and pipe connections

1/2", 3/4" and 1"	NPT (ANSI B 1.20.1)
	Socket weld ends to ANSI B 16.11,
DN15, 20 and 25	Flanged ends to ANSI B 16.5 Class 150 and 300 (Special Order)
1/2", 3/4" and 1"	Hygienic/sanitary clamp ends (Special Order)

Note: For alternative connections please consult Spirax Sarco.

Optional extras

Internal strainer (FTS14X). A manually adjustable needle valve can be added for use as a steam lock release mechanism (FTS14-C).

Note: All options are available at extra cost and are Special Order.

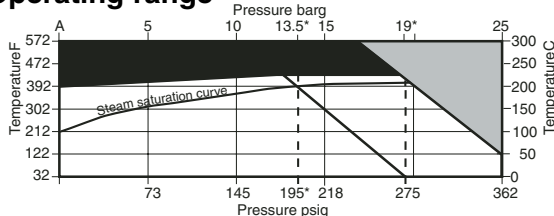
Limiting conditions (ISO 6552)

Body design conditions	PN25
PMA - Maximum allowable pressure	362 psig 25 barg
TMA - Maximum allowable temperature	572°F 300°C
TMO - Maximum operating temperature	437°F 225°C
Minimum operating temperature	-4°F -20°C

Note: For lower operating temperatures consult Spirax Sarco.

Designed for a maximum cold hydraulic test pressure of 544 psig 37.5 barg

Operating range



■ The product must not be used in this region.
■ The product should not be used in this region as damage to the internals may occur.

*PMO Maximum operating pressure for steam service,

A - B Flanged ANSI 300, screwed and socket weld.

A - C Flanged ANSI 150.

Note: For hygienic/sanitary clamp ends the maximum pressure and/or temperature may be restricted by the gasket or clamp used.

ΔPMX - Max. Differential Pressure

FTS14 - 4.5	FTS14-10	FTS14-14
65 psig	150 psig	200 psig
4.5 bar		10 bar 14 bar

Certification

This product is available with certification to EN 10204 3.1.B

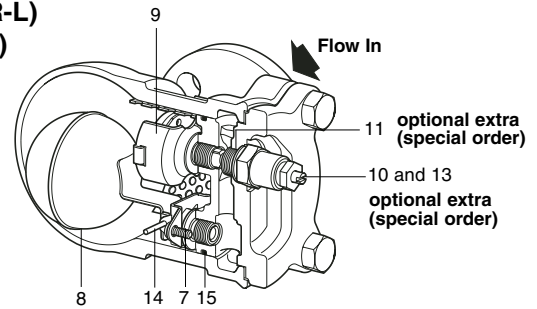
Note: All certification/inspection requirements must be stated at the time of order placement.

Local regulation may restrict the use of this product below the conditions quoted. Limiting conditions refer to standard connections only.

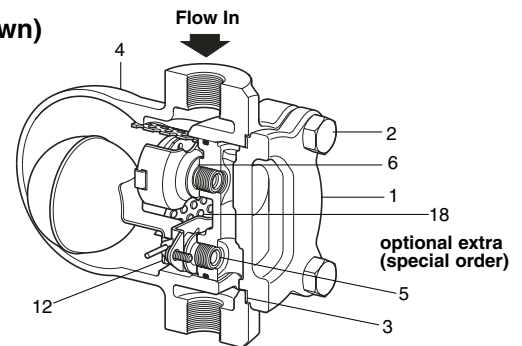
In the interests of development and improvement of the product, we reserve the right to change the specification.

TI-P145-01-US 11.02

FTS14-C (R-L) (Horizontal)



FTS14X (Vertical down)



Materials

No.	Part	Material
1	Body	Austenitic stainless steel (316) EN 10213-4 (1.4408) ASTM A351 CF8M
2	Cover bolts	Stainless steel BS EN 3506 A2-70
3	Cover gasket	Reinforced exfoliated graphite
4	Cover	Austenitic stainless steel (316) EN 10213-4 (1.4408) ASTM A351 CF8M
5	Main valve seat	Stainless steel BS 970 431 S29
6	Main valve/air vent seat gasket	Stainless steel
7	Main valve assembly screws	Stainless steel
8	Ball float and lever	Stainless steel BS 1449 304 S16
9	Air vent assembly	Stainless steel
10	SLR assembly	Stainless steel
11	SLR gasket	Stainless steel
12	Pivot frame	Stainless steel
13	SLR seal	Graphite
14	Pivot	Stainless steel
15	'O' ring	Grey Viton complies with FDA CFR Title 21, Para 177, Section 2600
*16	Valve spring (1" only)	Stainless steel
*17	Sensor blanking plug	Stainless steel (optional extra)
18	Strainer screen	Stainless steel (optional extra)

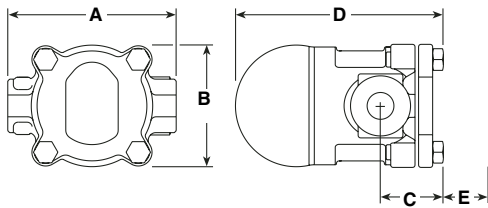
Note: Items 16 and 17 cannot be shown.

FTS14 Austenitic Stainless Steel Float & Thermostatic Steam Trap

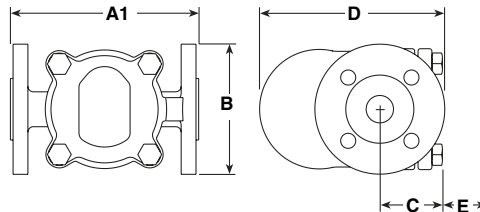
Dimensions/Weights approximate in inches and (millimeters)

SIZE	A SCREWED/SW	A CLAMPENDS	B	C	D	E WITHDRAW DISTANCE	F FTS14-C	WEIGHT SCREWED /SW
1/2"	5.3" (135)	7.1" (180)	3.8" (97)	1.9" (48)	6.4" (162)	5.3" (135)	.9" (22)	8.3" LBS
3/4"	5.3" (135)	7.1" (180)	3.8" (97)	1.9" (48)	6.4" (162)	5.3" (135)	.9" (22)	8.3" LBS
1"	5.5" (139)	7.9" (200)	4.4" (113)	2.0" (51)	7.0" (179)	5.7" (179)	.9" (22)	9.4 LBS
	A1 ANSI 150	A1 ANSI 300						WEIGHT FLANGED
DN15 (1/2")	5.8" (147)	7.9" (200)	3.8" (97)	3.0" (97)	6.4" (162)	5.3" (135)	.9" (22)	11 LBS
DN20 (3/4")	5.8" (147)	7.9" (200)	4.0" (102)	3.0" (77)	6.4" (162)	5.3" (135)	.9" (22)	11 LBS
DN25 (1")	6.3" (160)	8.3" (210)	4.4" (113)	2.4" (62)	7.0" (179)	5.7" (145)	.9" (22)	13.8 LBS

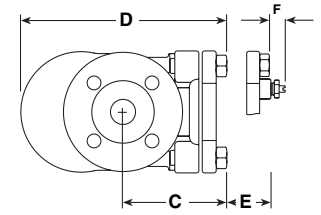
Screwed, socket welded and clamp ends (all sizes)



Flanged DN25

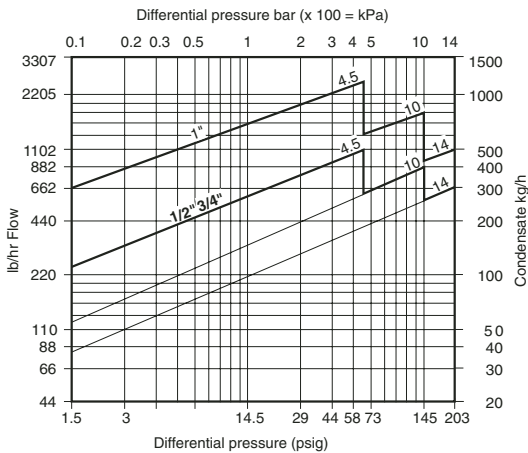


Flanged DN15, 20 and FTS14-C



Capacities

Note. Capacities shown are based on discharge at saturation temperature. When discharging sub-cooled condensate the air vent provides extra capacity. Under start-up conditions the thermostatic air vent will be open, and will provide additional condensate capacity to the main valve assembly. On 4.5 bar units this will provide a minimum of 50% increased capacity above the hot condensate figures shown. On 10 and 14 bar units this will be a minimum increase of 100% on the published capacity.



Safety information, installation and maintenance

For full details see the Installation and Maintenance Instructions (IM-P145-02) supplied with the product.

Spare parts

The spare parts available are shown in heavy outline. Parts drawn in broken line are not supplied as spares.

Available spares

Maintenance kit	3, 5, 6 (2 off), 7 (2 off), 8, 9, 12, 14, 15, 16 (1" only), 18	
Gasket set (packet of 3)		3, 15

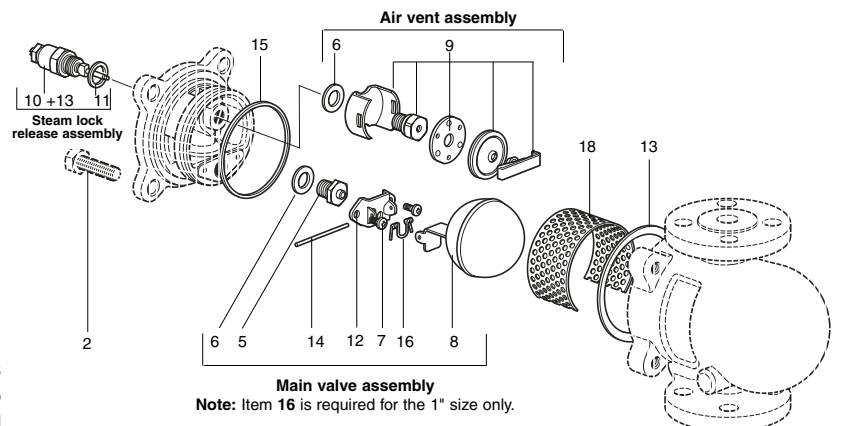
How to order spares

Always order spares by using the description given in the column headed 'Available spares' and state the size, type of trap and pressure range i.e. 4.5, 10 or 14 bar.

Example: 1 - Maintenance kit for a Spirax Sarco 1/2" FTS14-4.5 steam trap.

How to order

Example: 1 off Spirax Sarco 1/2" FT14 - 4.5TV stainless steel float trap fitted with screwed NPT connections. Trap is maintainable in line. Fitted with integral air vent and strainer screen.



TI-P145-01-US 11.02