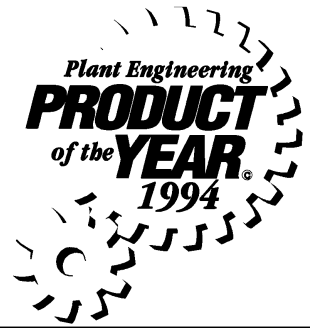


spirax/sarco®



Steel Liquid Drain Trap 3" and 4" FA450

The float-operated liquid drain trap discharges continuously in direct response to variations in liquid flow rate, assuring thorough drainage of the system.

Model ⇄	FA450	
Sizes	3"	4"
Connections	NPT, SW, Flanged	Flanged
Construction	Carbon Steel Body Stainless Steel Internals	

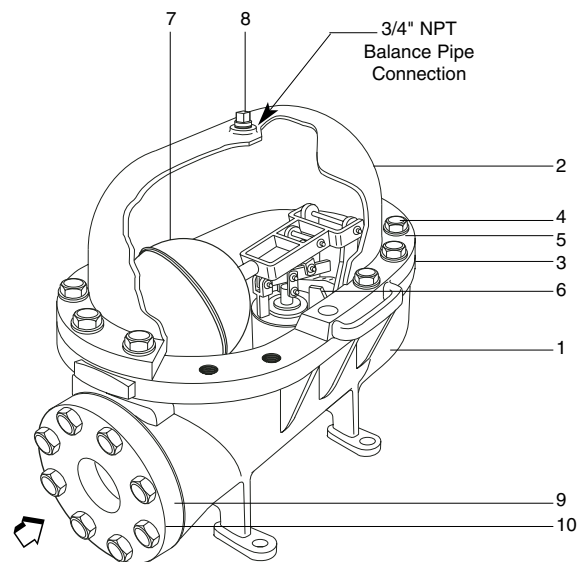
TYPICAL APPLICATIONS

Draining a liquid from a gas in large process applications.

Note: The double seated valve may not shut tight under no-load conditions. Normally, the liquid load will always be greater than the small residual leakage.

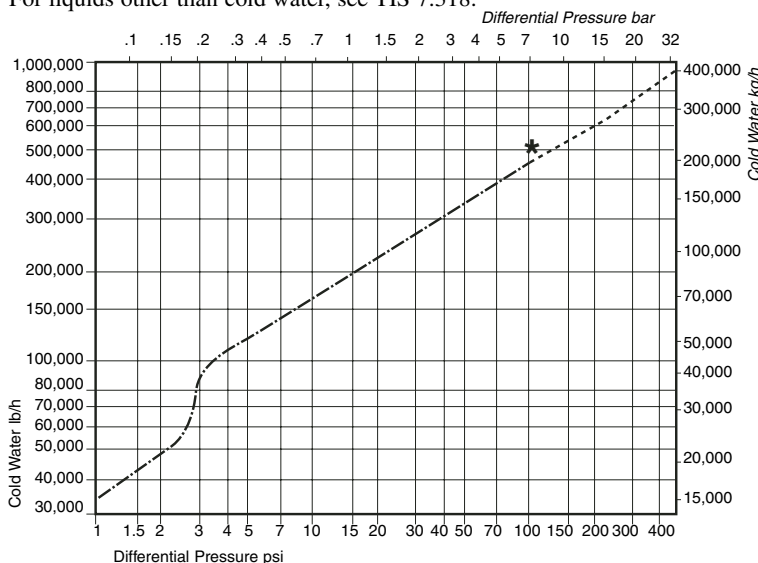
CONSTRUCTION MATERIALS

No.	Part	Material	
1	Body	Cast Carbon Steel	ASTM A216 WCB
2	Cover	Cast Carbon Steel	ASTM A216 WCB
3	Cover Gasket	Graphite with SS insert	
4	Cover Bolts	Steel	ASTM A193 GR B7
5	Lockwashers	Steel	
6	Main Valve Assembly	Stainless Steel	AISI 300 & Hardened Head and Seat
	Valve Mech. Gasket	Graphite	
	Valve Mech. Screws	Stainless Steel	
7	Float	Stainless Steel	ASTM A240 Type 304
8	Cover Plug (3/4" NPT)	Steel	
	Drain Plug (3/4" NPT)	Steel	
9	Companion Flange	Forged Steel	
10	Flange Bolts	Steel	ASTM A193 GR B7



CAPACITIES

For liquids other than cold water, see TIS 7.318.



LIMITING OPERATING CONDITIONS*

Max. Operating Pressure (PMO) Up to 450 psig, depending on the specific gravity of the liquid being drained. See TIS 7.318.

Max. Operating Temperature 650°F (343°C) at 450 psig (31 barg)

750°F (400°C) at operating pressures below 375 psig (26 barg)

PRESSURE SHELL DESIGN CONDITIONS*

PMA 450 psig/0-650°F 31 barg/0-343°C
Max. allowable pressure 425 psig/700°F 29 barg/371°C
375 psig/750°F 26 barg/400°C

TMA 750°F/0-375 psig 400°C/0-26 barg
Max. allowable temperature

* The limiting operating and design conditions for ANSI 150 flanged units will be limited by the flange rating.

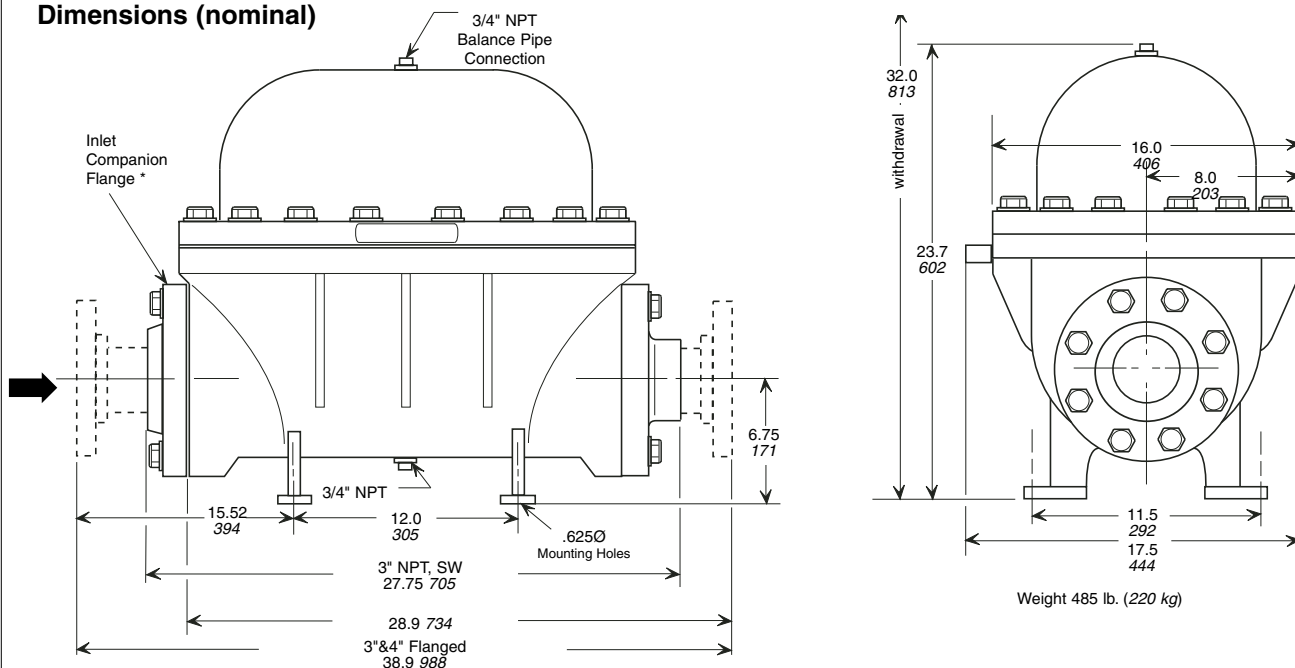
Local regulation may restrict the use of this product below the conditions quoted. Limiting conditions refer to standard connections only.

In the interests of development and improvement of the product, we reserve the right to change the specification.

TI-7-3151-US 03.94

Steel Liquid Drain Trap 3" and 4" FA450

Dimensions (nominal)



* The inlet connection on NPT and SW traps is a standard 4" ANSI 300 RF Flange bolted to the trap body. The flange bore is 3", NPT or SW to match the outlet connection of the trap.

SAMPLE SPECIFICATION

Liquid drain traps shall be of the mechanical ball float type having steel bodies with stainless steel internal parts. The piping connections shall be horizontal in-line, and the body shall incorporate mounting legs with drilled pads. The trap body shall be horizontally split and all internal parts shall be completely serviceable without disturbing the inlet and outlet piping.

INSTALLATION

The trap should be located below and close to the equipment drain point. A pipeline strainer should be installed ahead of the trap, and full-flow isolating valves should be placed to permit servicing. The mounting legs should be bolted to a firm horizontal support. Access above the trap must be provided for servicing. The cover has a plugged 3/4" NPT balance pipe connection. The balance pipe must be connected with a continuous rise between the trap and the equipment being drained.

Complete installation instructions are given in IMI 7.3151.

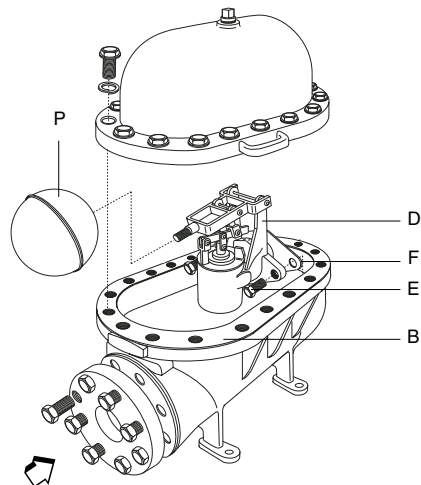
MAINTENANCE

This product can be maintained without disturbing the piping connections. Complete isolation from both supply and return line is required before any servicing is performed. The trap should be disassembled periodically for inspection and cleaning of the valve mechanism.

Complete installation and maintenance instructions are given in IMI 7.3151, which accompanies the product.

Liquid drain traps can be used to drain most liquids from most gases. However, some applications, particularly those involving hazardous or unusual fluids, may be subject to regulation or may otherwise require special consideration. Spirax Sarco will endeavor to provide whatever data is necessary to assist in product selection.

SPARE PARTS



Valve Mechanism Kit	D,E,F
Gasket Kit (pkt of 3 each)	B,F
Float Kit	P

© Spirax Sarco, Inc. 1994

TI-7-3151-US 03.94