

# spirax/sarco®

## Stainless Steel Filter 4" CSF26

The CSF26 is an in-line all 316 stainless steel filter suitable for use in steam, gas and liquid systems. The CSF26 is USDA approved, and conforms to the requirements of 3-A Accepted Practice Number 609-01 for the production of culinary steam. The CSF26 utilizes a fully cleanable sintered stainless steel element for reduced cost of ownership.

<b>Model</b>	<b>CSF26</b>
<b>Sizes</b>	4"
<b>Connections</b>	ANSI 150
<b>Construction</b>	Body: 316 Stainless Steel Element: 316 Stainless Steel (2 Elements Required)
<b>Element Rating</b>	2.8 microns Absolute
<b>Options</b>	Tri-Clamp® compatible, BSP connections

### Limiting Operating Conditions

**Max. Operating Pressure (PMO)** 195 psig/(10.4 barg)

**Max. Operating Temperature (TMO)** 375°F/(190°C)

### Pressure Shell Design Conditions

**PMA** 200 psig/0-100°F 13.8 barg/0-38°C  
Max. allowable pressure

**TMA** 375°F/0-95 psig 190°C/0-6.5 barg  
Max. allowable temp.

**Element Design Conditions** 20 psi/1.4 bar

Max. element differential pressure  
Housing is designed to contain (2) filter cartridges. Cartridges are not factory installed.

### Construction Materials

No.	Part	Material
1	HSG, Filter	316 SST
2	LEG, Filter (4)	304 SST
3	Kit, Accessory (4)	SST
4	Ring, RTNG (16)	Truarc 5133-62
5	Pin (5)	SA193 GRB7 ZP
6	Bolt Rod End (8)	5/8-11 UNC-2A x 5.00LG SA193 GRB7 ZP
7	O-Ring	Ethylene Propylene
8	Washer, Plain (8)	5/8" x 1/4" THK CS Zinc Pltd
9	Nut, Hex (8)	5/8-11 UNC-2B SA194 GR2H ZP
10	Nut, Hex (4)	3/8-16UNC, 316SST SA184 GR8M
11	Plate, Guide	SA240 316

### Minimum Clearance

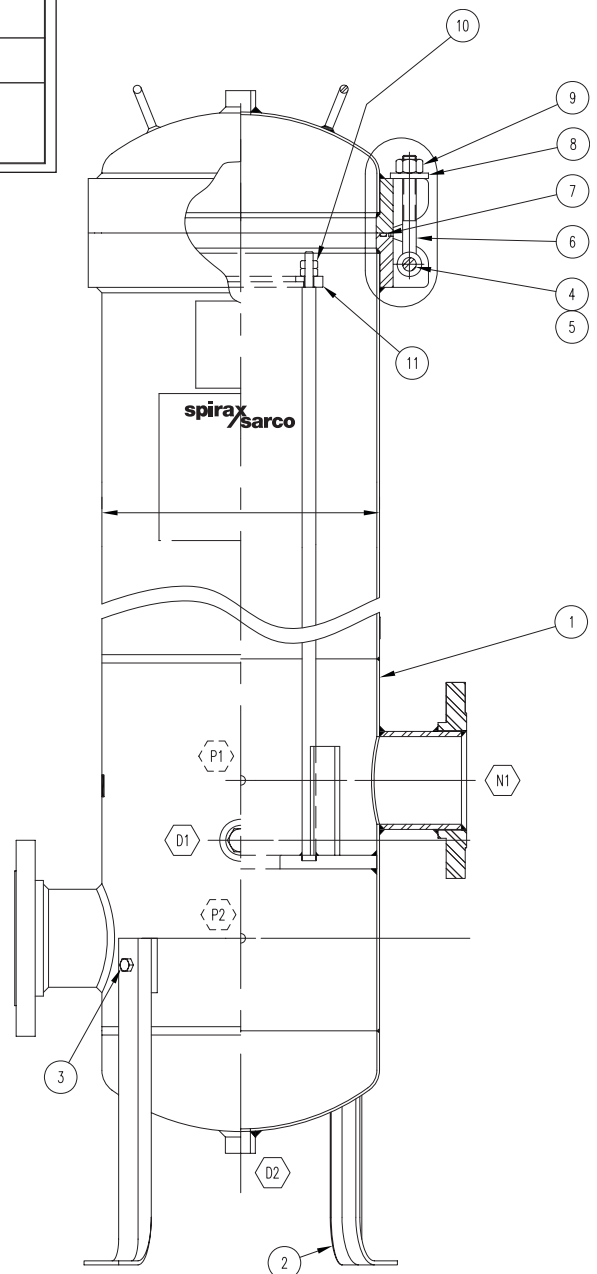
29.875" (758.8) minimum required for element removal

### Surface Finish

All internal process wetted surfaces are 316 stainless steel material. The interior surface is electropolished. The exterior surface is left in the as-fabricated and as-welded condition, then electropolished.

### Typical Applications

The CSF26 is ideally suited for culinary applications, where steam is being directly injected into food product, wash-down water, etc. Other applications include autoclaves, sterilizers and humidification systems often found in the healthcare and pharmaceutical industries.



Local regulation may restrict the use of this product below the conditions quoted. Limiting conditions refer to standard connections only.  
In the interests of development and improvement of the product, we reserve the right to change the specification.

TI-7-008-US 7.08

# Stainless Steel Filter

## 4" CSF26

### Nozzle Schedule

N1	Inlet	4" - 150 lb ANSI RFSO Flange
N2	Outlet	4" - 150 lb ANSI RFSO Flange
D1, D2	Drain	3/4" NPT 3000 lb Half Coupling
V1	Vent	3/4" NPT 3000 lb Half Coupling
P1, P2	Pressure Tap	1/4" NPT 3000 lb Half Coupling

**Capacities** — The following table lists CSF26 capacities, in lb/h of saturated steam, based on a pipeline velocity of 100 ft/s and an approximate differential pressure across the filter of 1 psi.

Steam Supply Pressure psig	Filter Size
	4"
10	1850
20	2500
30	3200
40	3910
50	4940
60	5450
70	6250
80	6850
90	7500
100	7750
110	8350
120	9000
130	9650
140	10300
150	10950

For liquid and gas applications, consult factory.

### Steam Filter Efficiency

The 2.8 micron absolute rated filter element will remove 95% of all particles exceeding 2 microns.

### Filter Stations

Also available from Spirax Sarco are a range of steam filter stations which conform to the requirements of the 3-A Accepted Practice Number 609-01. Each filter station includes a moisture separator with trap-set, strainer, CSF26 filter, together with the necessary auxiliary products required for efficient steam filtration. Further details are available upon request.

### Sample Specification

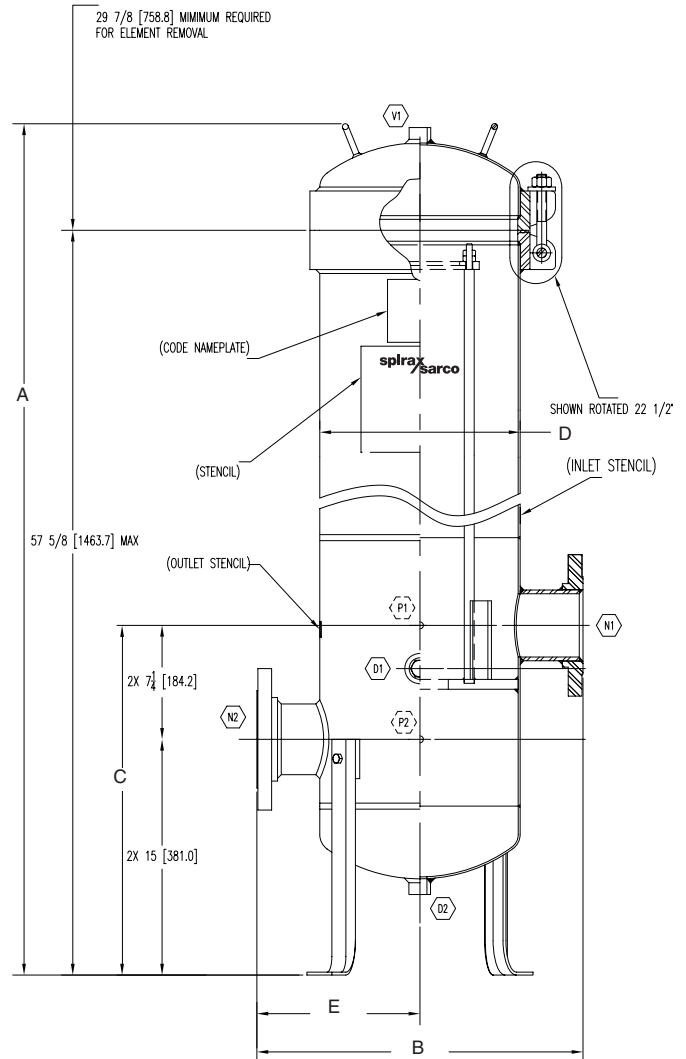
Steam filter shall be all 316 stainless steel, with cleanable sintered stainless steel element. Filter element to utilize double O-Ring seal, and be capable of removing 95% of all particles 2 microns and above. Body and element seals to be an FDA approved material.

### Installation & Maintenance

When used in steam service, it is recommended to remove the plastic drain plug and fit the CSF26 with a condensate drain trap and an air vent (Spirax Sarco MST 21). To prolong service life and ensure optimum filter efficiency, a strainer and separator should be installed upstream of the filter. This will ensure that entrained moisture and larger solid particles such as rust and pipscale are removed prior to filtration. It is recommended that the elements be removed for cleaning when the differential pressure across the filter reaches 15 - 20 psi. Cleaning can be achieved either chemically or ultrasonically. **Complete installation and maintenance instructions, which include element cleaning procedures, accompany the product.**

### Dimensions (nominal) in inches and millimeters

Size	A	B	C	D	E	Weight
4"	67 1702	20.75 527	22.25 565.2	12.75 323.9	10.375 263.5	254 lb 115 kg



### Spare Parts

- Filter Element with O-Rings
- Filter Element O-Rings (Pack of 2)
- Body O-Rings (Pack of 2)

Stainless Steel  
Specialties

© Spirax Sarco, Inc. 2008

TI-7-008-US 7.08