

# spirax/sarco®

## Spare Parts for the APT14 and APT14HC Automatic Pump Trap

### Spare parts

The spare parts available are shown in solid outline. Parts drawn in broken line are not supplied as spares.

### Available spares (See TI-5-228-US)

A	Cover assembly (A - G inclusive) (strainer H, not included) . . . . .	1, 2, 5-25
B	Cover gasket . . . . .	2
C	Inlet check valve . . . . .	2, 12
D	Spring and actuator arm . . . . .	2, 14, 24
E	Floats . . . . .	2, 5, 6, 7
F	Trap and outlet check valve mechanism . . . . .	2, 8, 9, 10 (APT14 only), 21, 22, 23
G	Inlet/exhaust valve and seat kit . . . . .	2, 16, 17, 18, 19, 27
H	See separate literature TI-P163-01-US . . . . .	29

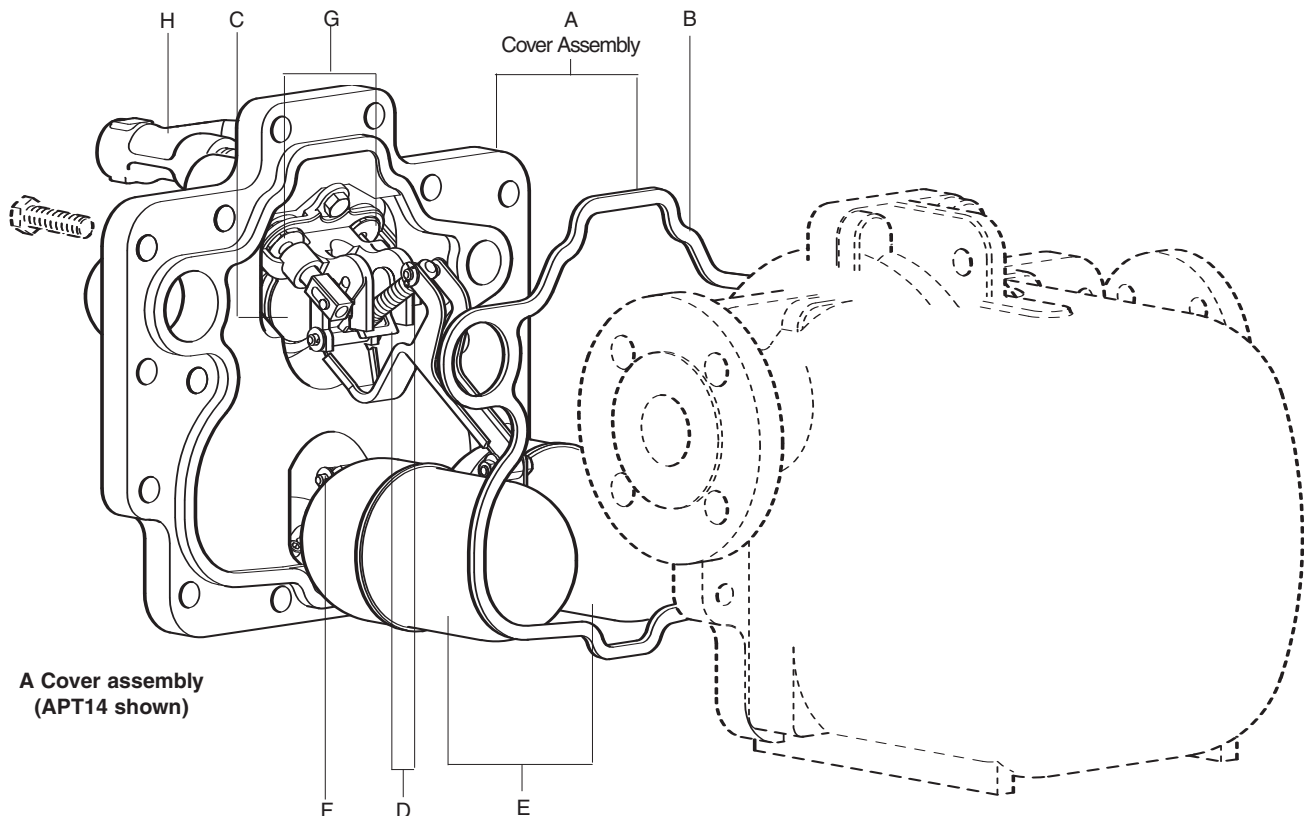
### Please note:

For customer convenience, spares are supplied in kits to ensure all the appropriate replacement parts are available e.g. when an inlet/exhaust valve and seat assembly is ordered, all replacement split pins, washers and gaskets will be provided in addition to the key components listed.

### How to order spares

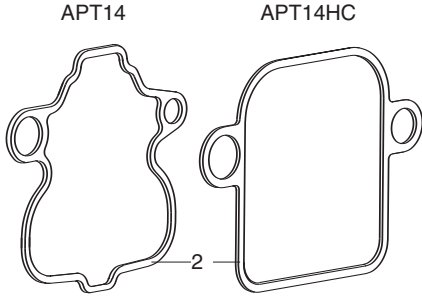
Always order spares by using the description given in the column headed 'Available spares' and state the size and type of unit.

**Example:** 1 x Inlet/exhaust valve and seat kit for a Spirax Sarco 1-1/2" x 1" APT14 automatic pump trap.

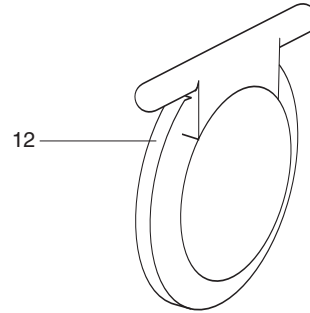


# Spare Parts for the APT14 and APT14HC Automatic Pump Trap

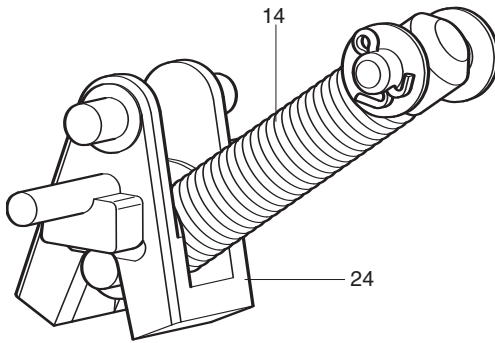
**B** Cover gasket



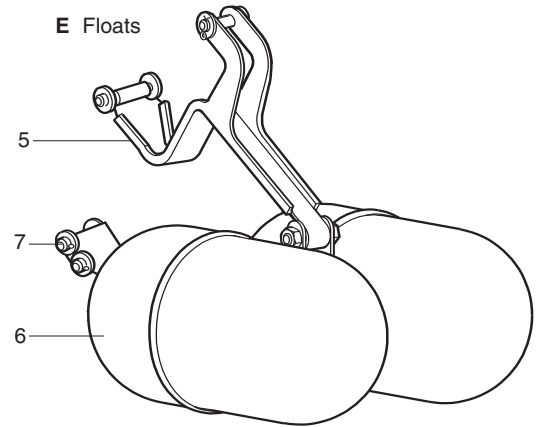
**C** Inlet check valve



**D** Spring and actuator arm

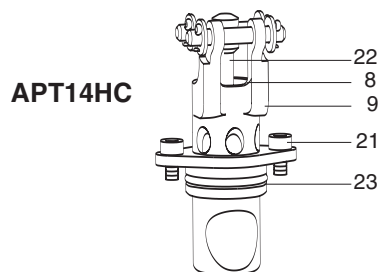
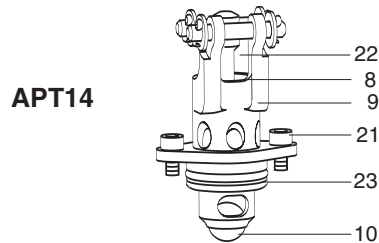


**E** Floats



**F** Trap and outlet check valve mechanism

**Note:** Item 10 is not included for the APT14HC



**G** Inlet / exhaust valve and seat kit

