

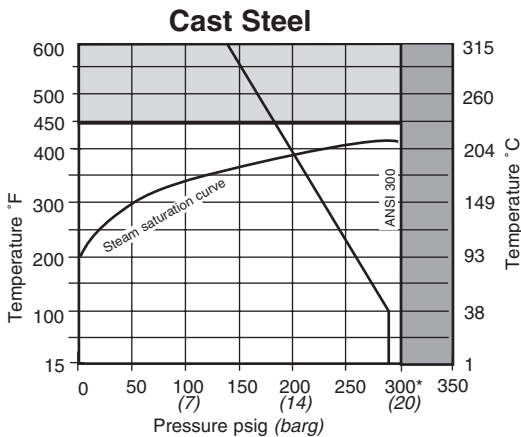
# spirax sarco

## Pilot Operated Pressure Regulator 2" 25P

The 25P is a self-actuated pilot-operated pressure regulator. Downstream pressure is fed back through an external sensing line to the pressure pilot, which adjusts the opening of the main valve so as to maintain the set pressure.

<b>Model</b>	<b>25P</b>
<b>PMO</b>	300 psig
<b>Sizes</b>	2"
<b>Connections</b>	ANSI 300 figd.
<b>Construction</b>	Cast Steel

### Limiting Operating Conditions



■ The product should not be used in shaded area.

\*If higher operating pressures are required, please consult factory.

Note: Maximum temperature for Stainless Steel tubing is 600°F

### C<sub>v</sub> Values

Size	2"
C <sub>v</sub> value	35.0

### Downstream Pressure Ranges

For the following downstream pressures, three color-coded pilot valve springs are available:

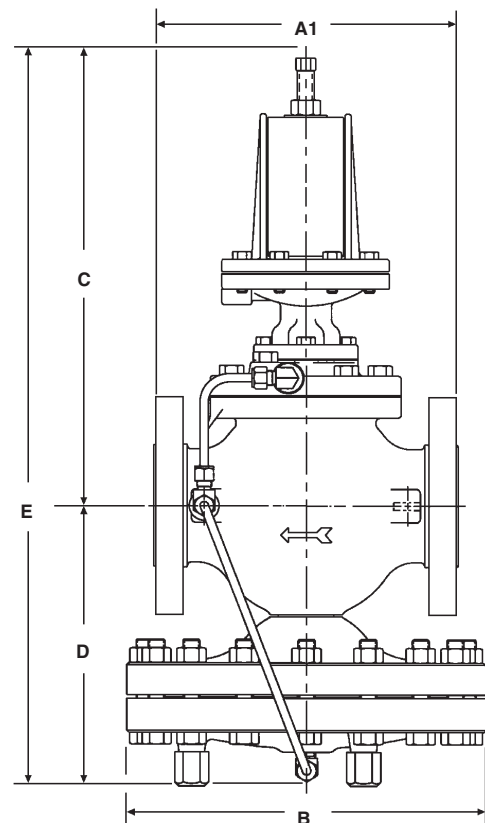
**Yellow:** 3 to 30 psi    **Blue:** 20 to 100 psi    **Red:** 80 to 250 psi

### Sample Specification

The pressure regulator shall be of the pilot-actuated diaphragm operated type. The main valve shall be single-seated with hardened stainless steel trim; the regulator body shall be cast steel. The pilot shall be bolted directly to the regulator body.

### Typical Applications

The 25P is a reliable, accurate regulator to reduce steam from a high supply pressure to the most efficient operating pressure of the equipment, and to protect the equipment from dangerously high pressures.



Optional left or right hand mounted transmission tubing. Comes complete with removable legs.

### Dimensions (nominal) in inches and millimeters

Size	Ansi 300					Weight
	A1	B	C	D	E	Cast Steel
2"	9.0 228	10.6 270	13.3 338	8.2 208	21.5 546	75 lb 34 kg

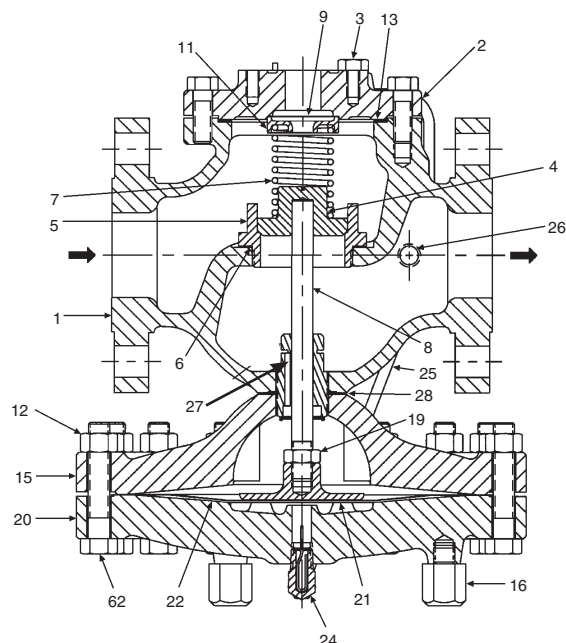
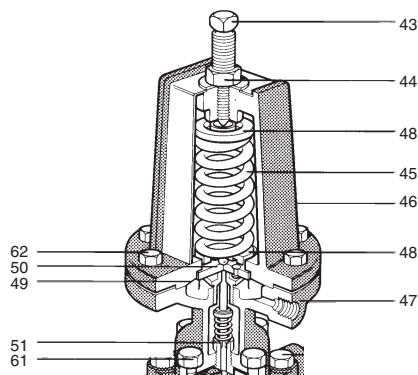
Local regulation may restrict the use of this product below the conditions quoted. Limiting conditions refer to standard connections only.

In the interests of development and improvement of the product, we reserve the right to change the specification.

TI-3-020-US 01.12

# Pilot Operated Pressure Regulator

## 2" 25P



### Construction Materials

No.	Part	Material	
1	Valve Body	Cast Steel	ASTM A216 Gr WCB
2	Cover	Cast Steel	ASTM A216 Gr WCB
3	Cover Bolts	Steel	ASTM A449
4	Main Valve Head	Stainless Steel	400 Series Stn Stl
5	Main Valve Seat	Stainless Steel 2" - 4"	AISI 303
6	Main Valve Seat Gasket	Copper	ASTM B272
7	Valve Return Spring	Stainless Steel	AISI 631
8	Valve Stem	Stainless Steel	AISI 303
9	Strainer Screen	Stainless Steel	AISI 304
11	Spring Guide	2" - 4"	AISI 1117
12	Nut	Steel	ASTM A307
13	Cover Gasket	Graphite	
15	Upper Diaphragm Case	Cast Steel	ASTM A216 Gr WCB
16	Removable Legs	Cast Steel	ASTM A216 Gr WCB
19	Nut	Steel 2" - 4"	ASTM A307
20	Lower Diaphragm Case	Cast Steel	ASTM A216 Gr WCB
21	Diaphragm Plate	Brass	ASTM B124 (377)
22	Main Diaphragm (2 ply)	Stainless Steel	ASTM A240
24	Tube & Orifice	Stainless Steel	AISI 304
25	Tubing Assembly	Stainless Steel	AISI 304
26	Plug (Cast Steel)	Steel	ASTM A105
27	Connector Stud	Stainless Steel	AISI 303
28	Body Gasket	Copper Clad	Non-Asbestos Fill
43	Adjustment Screw	Stainless Steel	AISI 303
44	Jam Nut	Brass	ASTM B16
45	Pilot Valve Spring	Steel	AISI 1060

No.	Part	Material	
46	Upper Diaphragm Case	Cast Steel	ASTM A216 Gr WCB
47	Lower Diaphragm Case	Cast Steel	ASTM A216 Gr WCB
48	Spring Plate	Steel	ASTM A569
49	Diaphragm	Stainless Steel	ASTM A240
50	Diaphragm Plate	Brass	ASTM B36
51	Pilot Head Spring	Stainless Steel	AISI Type 302
60	Pilot Gasket	Graphite	
61	Pilot Mounting Screws	Steel	ASTM A449
62	Diaphragm Case Screws	Steel	

### Installation

The regulator should be installed in a horizontal line with suitable bypass and isolating valves. A steam trap should be installed upstream to prevent condensate from reaching the regulator. The trap and regulator should both be protected with a strainer. The pressure sensing line should be located in a straight section of the downstream piping at least 10 pipe diameters from the nearest fitting. Complete installation instructions are given in IM-3-000-US.

### Maintenance

Complete installation and maintenance instructions are given in IM-3-100-US and IM-3-101-US, a copy of which is supplied with each regulator. Available spare parts are shown on IM-3-101-US and TI-3-027-US.

TI-3-020-US 01.12