

spirax/sarco®



Cast Steel Float & Thermostatic Steam Trap 3" and 4" FT450

The trap contains a float valve mechanism which modulates to discharge condensate continuously at steam temperature, while non-condensable gases are released by a separate internal thermostatic air vent.

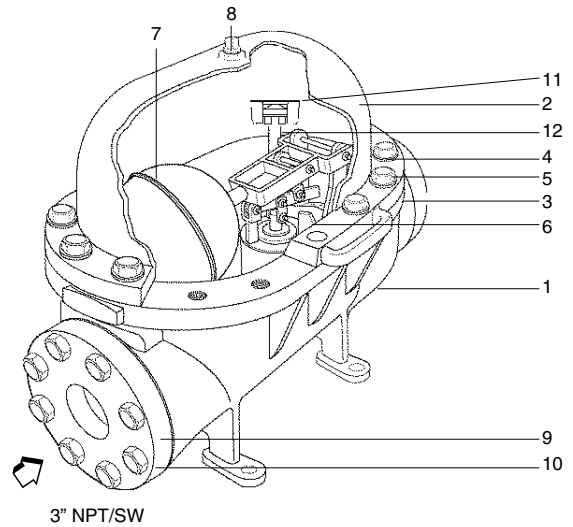
Model ⇄	FT450	
PMO	450 psig	
Sizes	3"	4"
Connections	NPT, SW, Flanged	Flanged
Construction	Carbon Steel Body Stainless Steel Internals	

Typical Applications

- Reboilers, heat exchangers and other large process equipment
- Large absorption chillers
- In combination with the Spirax Sarco 4" Pressure Powered Pump™

Construction Materials

No.	Part	Material	
1	Body	Cast Carbon Steel	ASTM A216 WCB
2	Cover	Cast Carbon Steel	ASTM A216 WCB
3	Cover Gasket	Graphite with SS insert	
4	Cover Bolts	Alloy Steel	ASTM A193 GR B7
5	Lockwashers	Steel	
6	Main Valve Assembly	Stainless Steel	AISI 300 (Hardened Head and Seat)
	Valve Mech. Gasket	Graphite	
	Valve Mech. Screws	Stainless Steel	
7	Float	Stainless Steel	ASTM A240 Type 304
8	Cover Plug (3/4" NPT)	Steel	
	Drain Plug (3/4" NPT)	Steel	
9	Companion Flange	Forged Steel	
10	Flange Bolts	Alloy Steel	ASTM A193 GR B7
11	Air Vent Assembly	Stainless Steel	
	Air Vent Head	Stainless Steel	Type 440 GR B
	Air Vent Seal	Stainless Steel	Type 303
11A	Air Vent	Stainless Steel & Bimetal	RAU Type RR
12	Air Vent Pipe	Stainless Steel	



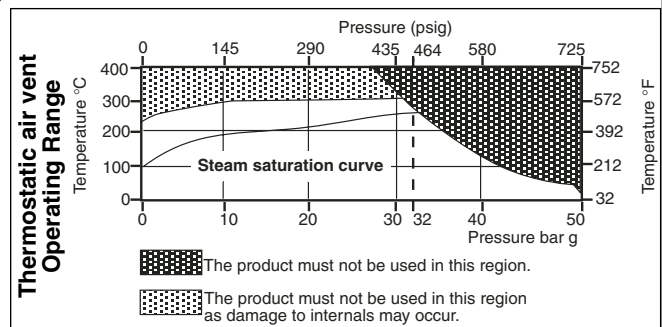
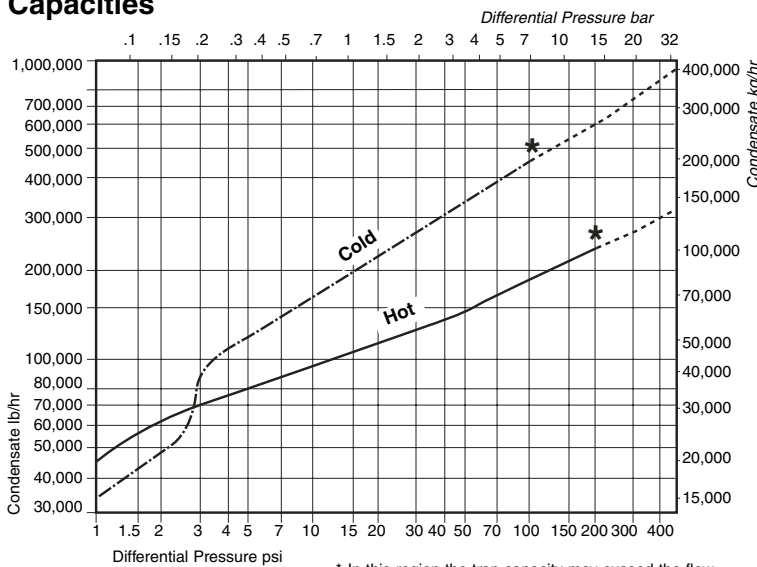
Limiting Operating Conditions

Max. Operating Pressure 450 psig (31 barg)

Max. Operating Temperature Optional Bimetal

650°F (343°C) at 450 psig (31 barg)
750°F (400°C) at operating pressures below 375 psig (26 barg)

Capacities



Pressure Shell Design Conditions

PMA 450 psig/up to 650°F 31 barg/up to 343°C
Max. allowable pressure 425 psig/700°F 29 barg/371°C
 375 psig/750°F 26 barg/400°C

TMA

Max. allowable temperature 750°F/0-375 psig 400°C/0-26 barg

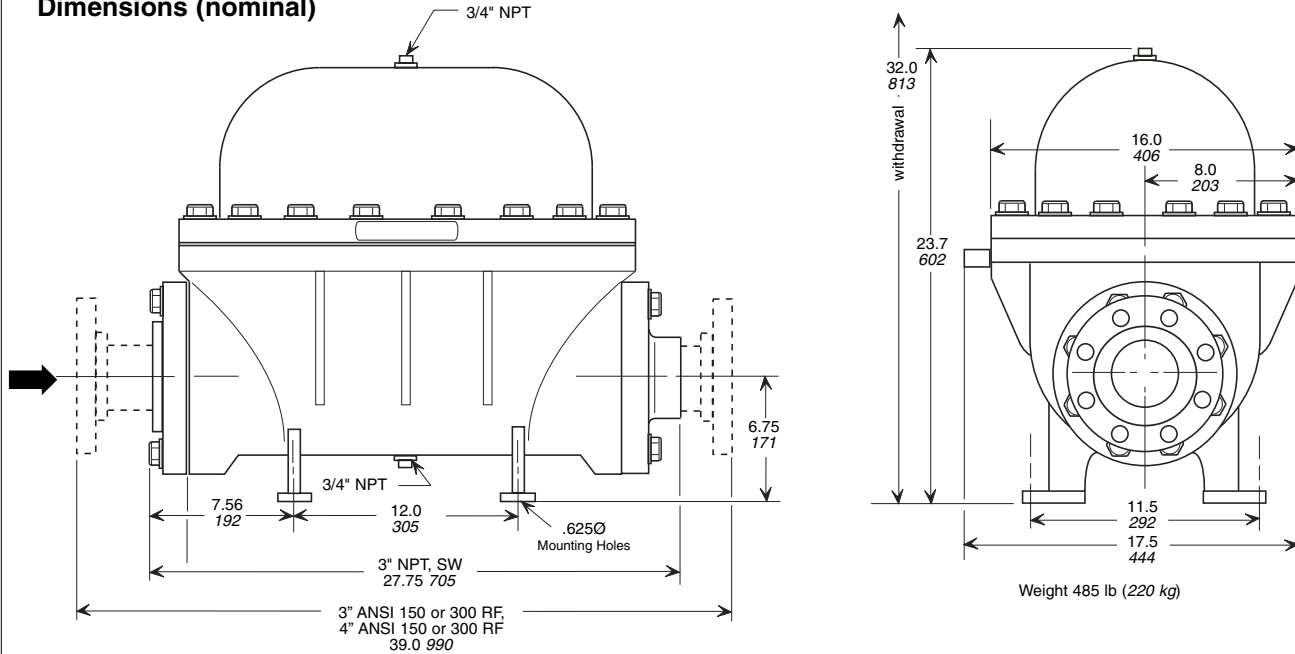
Local regulation may restrict the use of this product below the conditions quoted. Limiting conditions refer to standard connections only.

In the interests of development and improvement of the product, we reserve the right to change the specification.

TI-2-3041-US 04.01

Cast Steel Float & Thermostatic Steam Trap 3" and 4" FT450

Dimensions (nominal)



Sample Specification

Steam traps shall be of the mechanical ball float type having cast steel bodies with stainless steel internal parts. The piping connections shall be horizontal in-line, and the body shall incorporate mounting legs with drilled pads. The traps shall have an integral thermostatic air vent. The trap body shall be horizontally split and all internal parts shall be completely serviceable without disturbing the inlet and outlet piping.

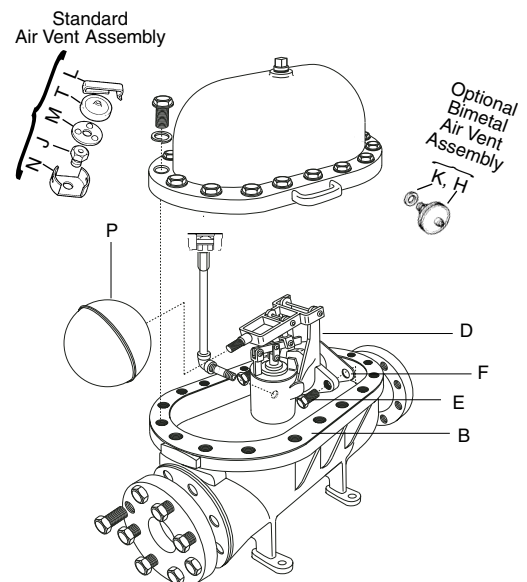
Installation

The trap should be located below and close to the equipment drain point. A pipeline strainer should be installed ahead of the trap, and full port isolating valves should be placed to permit servicing. The mounting legs should be bolted to a firm horizontal support. Access above the trap must be provided for servicing. Complete installation instructions are given in IMI 2.3041.

Maintenance

This product can be maintained without disturbing the piping connections. Complete isolation from both supply and return line is required before any servicing is performed. The trap should be disassembled periodically for inspection and cleaning of the valve mechanism and air vent. Complete installation and maintenance instructions are given in IMI 2.3041, which accompanies the product.

Spare Parts



Valve Mechanism Kit	D, E, F
Gasket Kit (pkt of 3 each)	B, F
Air Vent Kit Standard	N, J, M, T, L
Air Vent Kit Optional	K, H
Float Kit	P

© Spirax Sarco, Inc. 2001

TI-2-3041-US 04.01