

# spirax sarco®

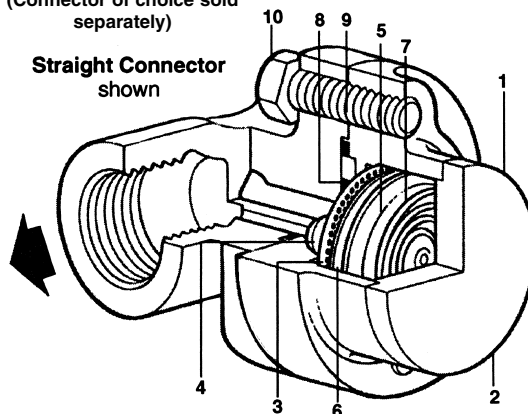
## Balanced Pressure Thermostatic Steam Trap UBP32 with Universal Connector

The welded stainless steel element is self-adjusting over the entire operating pressure range and will discharge condensate at approximately 22°F (12°C) below saturated steam temperature. The element is resistant to waterhammer. The connector can be installed in either horizontal or vertical piping, and the trap is easily removed without disturbing the pipework.

<b>Model</b> ⇨	<b>UBP32</b>
<b>PMO</b>	464 psig
<b>Sizes</b>	1/2", 3/4" & 1"
<b>Connections</b>	NPT, SW
<b>Trap Construction</b>	All Stainless Steel Tamper-proof body
<b>Connector Construction</b>	Straight strainer type Stainless steel or cast steel
<b>Options</b>	Subcooling capsule filling Near to steam capsule filling subcooling capsule filling

(Connector of choice sold separately)

**Straight Connector**  
shown



### Construction Materials

No.	Part	Material	
1	Body	Austenitic stainless steel (304 grade)	ASTM A351 Gr. CF8
2	Cover	Austenitic stainless steel (304 grade)	ASTM A276 Gr. 304
3	Screen	Stainless Steel	ASTM A240 Gr. 304
4	Seat	Stainless Steel	ASTM A276 Gr. 431
5	Capsule	Stainless Steel	
6	Spacer plate	Stainless Steel	ASTM A240 Gr. 304
7	Spring	Stainless Steel	ASTM A313 Gr. 302
8	Inner gasket	Stainless Steel graphite filler	Spirally wound AISI 304 strip
9	Outer gasket	Stainless Steel graphite filler	Spirally wound AISI 304 strip
10	Connector screws	Steel	ASTM A183 B7

### Limiting Operating Conditions

**Max. Operating Pressure (PMO)** 464 psig (32 barg)

**Max. Operating Temperature** 572°F (300°C) at 450 psig (31 barg)

See chart below  
For all other pressures and temperatures

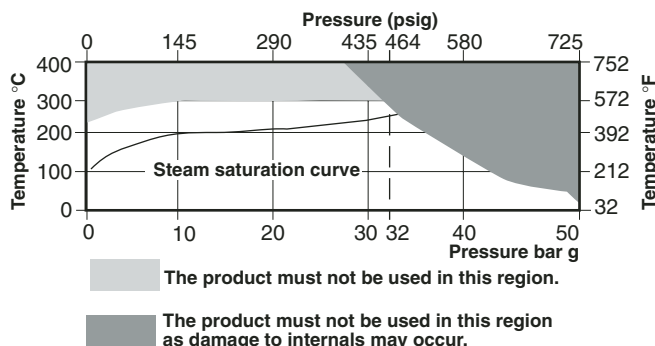
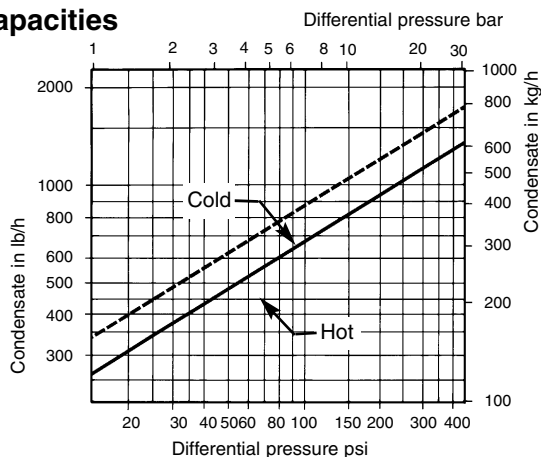
### Pressure Shell Design Conditions

**PMA** Max. allowable pressure  
720 psig/up to 100°F 50 barg/up to 38°C  
450 psig/459°F 31 barg/237°C  
400 psig/752°F 27 barg/426°C

**TMA** Max. allowable temperature  
752°F/0-400 psig 400°C/0-27 barg

### Operating Range

### Capacities



### Capsule Filling

As standard, the trap is supplied with filling for 22°F (12°C), below saturation.

As an optional alternative, a near to steam fill with a 11°F (6°C) below saturation or a sub cooled 44°F (24°C) below saturation version can be supplied.

Note: If the alternative capsule is required, this must be clearly stated on the order.

### Typical Applications

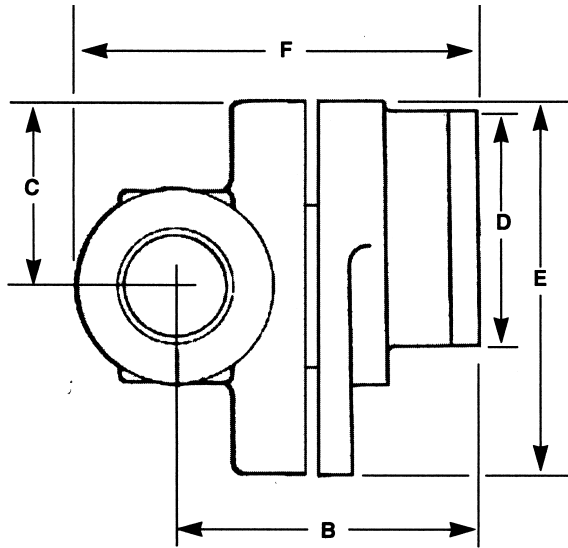
Steam tracing systems and steam main drip stations, kitchen and hospital equipment, steam coils, and steam radiators.

Local regulation may restrict the use of this product below the conditions quoted. Limiting conditions refer to standard connections only.

In the interests of development and improvement of the product, we reserve the right to change the specification.

TI-2-008-US 04.04

# Balanced Pressure Thermostatic Steam Trap UBP32 with Universal Connector



Dimensions (nominal) in inches and millimeters							
Size	A	B	C	D	E	F	Weight
1/2"	2.4	2.2	1.3	1.8	2.7	3.0	3.5 lb
	61.9	5.6	33	46	69	76	1.62 kg
3/4"	2.8	2.6	1.3	1.8	2.7	3.4	3.8 lb
	72	66	33	46	69	86	1.7 kg
1"	3.5	3.3	1.3	1.8	2.7	4.1	4.2 lb
	89	84	33	46	69	104	9.26 kg

The connector may be rotated to any position.

## Sample Specification

Steam trap shall be supplied with a pipeline connector which, once installed, remains in the line permanently. The trap shall be attached to the connector by two bolts, to enable simple and rapid installation and replacement. The connection is designed to allow installation on pipework that is vertical, horizontal or any angle in between. The trap itself shall be maintenance-free and tamper-proof design of all stainless steel construction with forged body and drawn cover completely sealed against leakage. Operating element to be a solidly liquid-filled thermostatic capsule which self adjusts to all pressures to 435 psig. Trap shall vent air freely and withstand water-hammer, freezing and superheat.

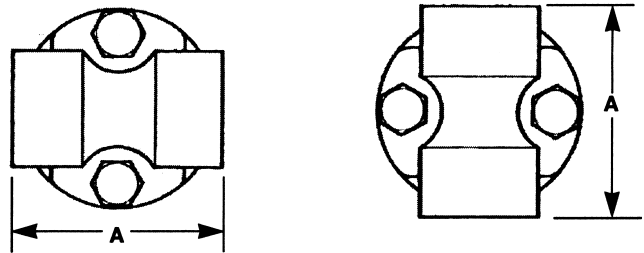
## Installation

The connector can be installed in either horizontal or vertical pipework. Full port isolation valves should be installed upstream and downstream of the connector. Line the threaded holes in the trap up with the holes in the connector. Insert the bolts supplied through the connector and thread into the trap evenly. Torque bolts evenly to 22-26 ft-lbs.

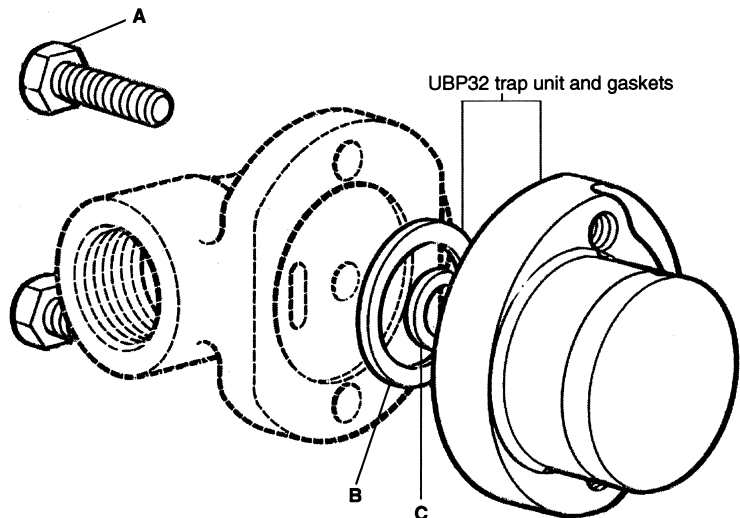
## Maintenance

This product is factory sealed for tamper-proof operation. Complete isolation from both supply and return line is required before the trap is removed.

**Complete installation and maintenance instructions are given in the IMI sheet, which accompanies the product.**



## Spare Parts



Connector Screw & Gasket Set      A, B, C

Available spare parts are shown in heavy outline. Parts drawn in broken line are not supplied as spares.

**We certify that the data as given  
on this sheet are correct.**

Signed: \_\_\_\_\_

Date: \_\_\_\_\_