

spirax sarco®

Electric Pilot Operated On/Off Regulator 6" 25E

The 25E is controlled by an electric pilot valve. The main valve opens wide when the pilot is energized; it closes when the pilot is de-energized. The 25E does not modulate or throttle steam at part load. This valve meets Class IV shut-off specifications but is not suitable for dead-end service.

Model	25E	
Sizes	6"	
Connections	ANSI 125, 250	ANSI 150, 300
Construction	Cast Iron	Cast Steel
Options	Reduced Orifice Designated by "S"	
Electric Pilot Specifications	Enclosure: NEMA 4 & 7 (C&D) 115v (230v)/60Hz Holding: 23 VA Inrush: 45 VA Normally closed 200 psig Max. operating pressure	
Electric Pilot Options	140 psig Max. operating pressure (for faster response time) 230 volt coil	

Typical Applications

On/Off control of steam flow in response to remote manual or automatic electrical signals which may originate at safety switches, timers, manual switches, etc.

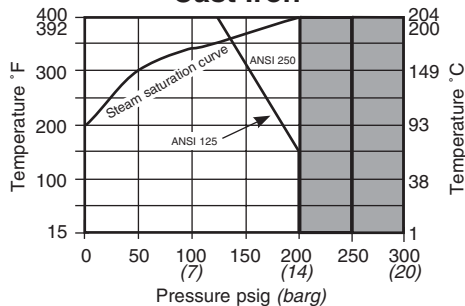
Sample Specification

The On/Off operation of the main valve shall be controlled by an electric solenoid pilot which may be removed without disturbing the control tubing connections. The main valve shall be single-seated, with hardened stainless steel trim; the valve body shall be cast iron. The electric pilot shall have a NEMA 4&7 (C&D) enclosure with 115v (230v) 60 Hz coil.

Capacities

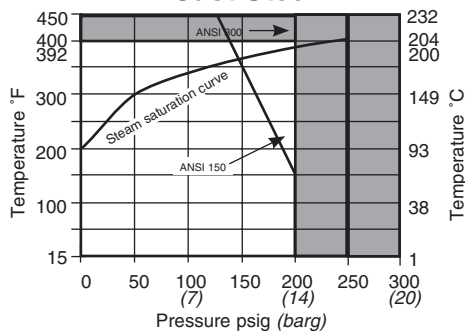
The valve is sized according to the temperature control requirements. For selection and sizing, see TI-1-1124-US.

Limiting Operating Conditions Cast Iron



■ The product should not be used in shaded area.

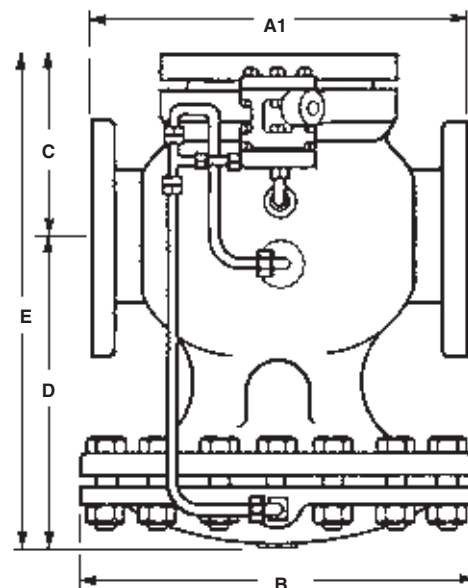
Cast Steel



■ The product should not be used in shaded area.

C_v Values

Size	6"	6" "S"
C _v value	260	185



Dimensions (nominal) in inches and millimeters

	ANSI 125/150		ANSI 250/300				
Size	A1	A1	B	C	D	E	WEIGHT
6"	18.1	19.0	19.75	8.75	16.7	25.4	560 lb
	460	483	502	222	424	646	254 kg

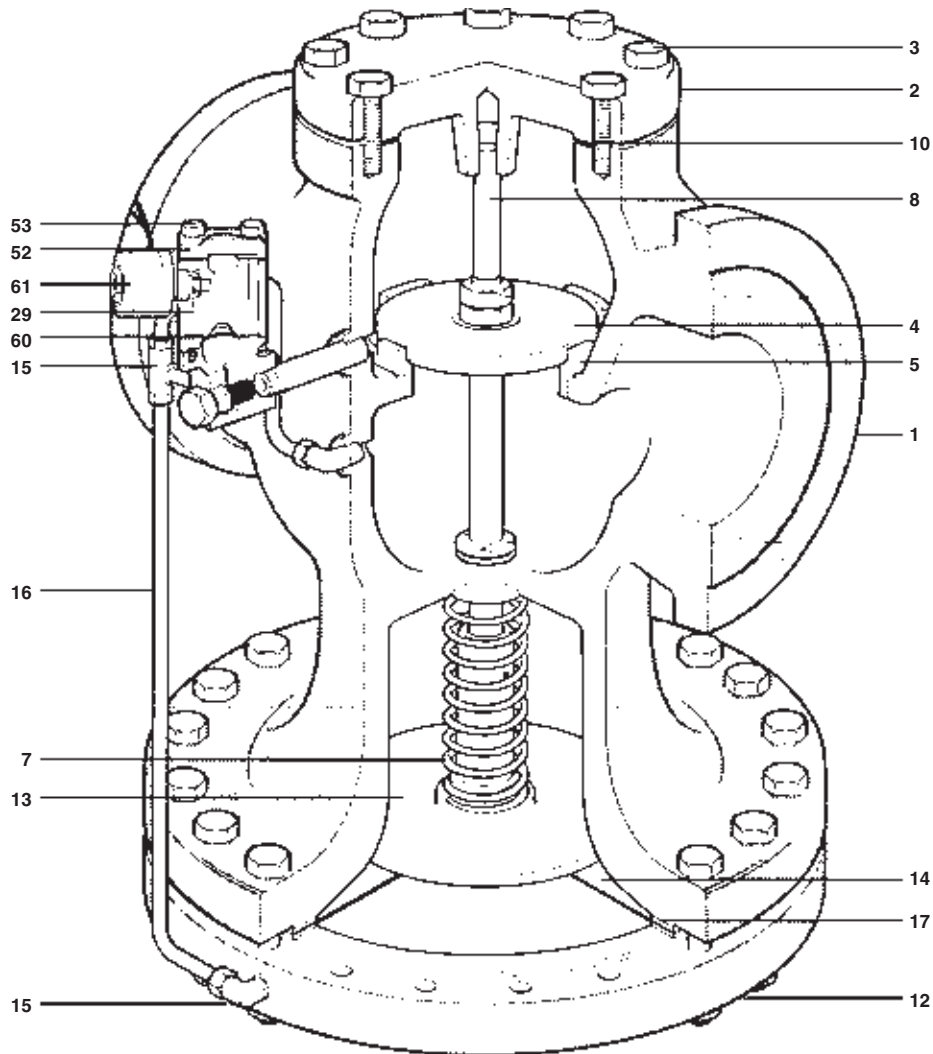
Local regulation may restrict the use of this product below the conditions quoted. Limiting conditions refer to standard connections only.

In the interests of development and improvement of the product, we reserve the right to change the specification.

TI-1-1119-US 06.10

Electric Pilot Operated On/Off Valve Regulator

6" 25E



Construction Materials

No.	Part	Material	
1	Valve Body	Cast Iron	ASTM A 126 CL B
		Cast Steel	ASTM A 216 WC B
2	Cover	Cast Iron	ASTM A 126 CL B
		Cast Steel	ASTM A 216 WC B
3	Cover Bolts	Steel	AISI 1038
4	Main Valve Head	Stainless Steel	ASTM A 743 CA 40
5	Main Valve Seat	Stainless Steel	ASTM A 743 CA 40
7	Valve Return Spring	Stainless Steel	AISI 302
8	Valve Stem	Stainless Steel	AISI 304
10	Cover Gasket	Graphite	BS 2815 A
12	Lower Diaphragm Case	Cast Iron	ASTM A 126 CL B
		Cast Steel	ASTM A 216 WC B
13	Diaphragm Plate	Stainless Steel	ASTM A 743 CA 40
14	Main Diaphragm (2 ply)	Stainless Steel	ASTM A240
15	Orifice	Brass	ASTM B16
16	Tubing Assembly	Copper	ASTM B280 (122)
17	Diaphragm Gasket	Graphite	BS 2815 A
29	Electric Pilot Adaptor	Cast Iron	ASTM A126 CL B
52	Electric Pilot Cover	Cast Iron	ASTM A 126 CL B
53	Cap Screws	Steel	ASTM A449
60	Pilot Gasket	Graphite	
61	Electric Solenoid Valve		

Installation

The valve should be installed in a horizontal pipe with suitable by-pass and isolating valves. A steam trap must be installed upstream to prevent condensate from reaching the valve. The trap and valve should both be protected with a strainer separator set.

Maintenance

Complete installation and maintenance instructions are given in IM-3-000-US and ADVP 3029, a copy of which is supplied with each valve. Available spare parts are shown on TI-1-1120-US and TI-1-1121-US.

TI-1-1119-US 06.10