

HONG KONG

**Spirax Sarco Pte Ltd
(Hong Kong Branch)**
Unit 1507, 15/F, Prosperity
Center, Chong Yip Street,
Kwun Tong, Kowloon,
Hong Kong

Tel: (852) 2754 9828
Fax: (852) 2754 3660
Contact: Alfred Wong
E-mail: sales@
spirax.com.hk

INDONESIA

Spirax Sarco Rep Office
Jln Zeni No. 4
Mampang Parapatan
Jakarta 12790, Indonesia

Tel: (62) 021 797 3332
Fax: (62) 021 798 2156
Contact: Cosner Tambunan
E-mail: spiraxsarco.jkt@
petrologmum.co.id

THE PHILIPPINES

**Spirax Sarco Pte Ltd
(Philippines Branch)**
GE Building, 2291 Chino
Roces Avenue Makati City,
Metro Manila, Philippines

Tel: (63) 2812 8654
Fax: (63) 2812 8673
Contact: Ian Aplin
E-mail: sales_ph@
sg.spiraxsarco.com

SINGAPORE

**Spirax Sarco Pte Ltd
(Regional Office)**
464 Tagore Industrial Avenue
Singapore 787833

Tel: (65) 6 349 0480
Fax: (65) 6 459 6854
Contact: Kwek Chin Leong
E-mail: KwekChinLeong@
sg.spiraxsarco.com

**PT Petrolog Multi
Usaha Mandiri**
Jln Zeni No. 4
Mampang Parapatan
Jakarta 12790, Indonesia

Tel: (62) 021 790 1480
Fax: (62) 021 798 2156
Contact: Budi Setiawan
E-mail: bsetiawan@
petrologmum.co.id

VIETNAM

**Spirax Sarco Vietnam
Rep Office**
64 / 22 Pho Quang, Ward 2
Tan Binh Dist, Ho Chi Minh City
Vietnam

Tel: (84) 08 9974324
Fax: (84) 08 4086909
Contact: Nguyen Thanh Hai
E-mail: spiraxsarco@
hcm.vnn.vn

PT Centrindo Palmax
Blok.F No.2-3 Kompleks
Brayan, Prima Jl. KL. Yos
Sudaruso, Tanjung Mulia
Medan

Tel: (62-61) 6642784-6642785
Fax: (62-61) 6642786
Contact: Sugianto
E-mail: sales@
centrindo.com

S\$2.00

MICA (P) 074/01/2007

spirax/sarco

STEAM EXPRESS

Q4
October -
December 2007

Knowledge, Service & Products

Steam Trap Surgery

The right fit

It's amazing what you find when you walk around a plant. Some of the most common errors that we see are steam traps that are either incorrectly installed or wrongly specified. Take a few minutes to look again at your traps and make sure they are the right ones for the job and they are fitted properly.



Steam traps installed back to front (trap inlet to pipe outlet)

Trap will be less responsive, inefficient in condensate removal and may waterlog.



Two steam traps fitted in series

The system suffers reduced capacity to drain condensate, waterlogging, poor performance and possible waterhammer.



Float traps installed upside down or hanging down

Steam will constantly leak through the steam trap's main valve, wasting energy.



Orifice steam trap fitted in a process with a varying load

Orifice traps do not work properly with a varying load. Change them to a more suitable type such as a float trap, to make sure your installation is fit for purpose.

If you're not sure that you've got the right trap for the job, ask Spirax Sarco for a steam trap survey to identify which traps need replacing or maintaining. It will almost certainly yield impressive energy savings. Contact your nearest Spirax Sarco office today (contact details can be found on back page).



VISIT YOUR NEAREST SPIRAX SARCO TODAY!

Whether it is for some advice or a discussion on optimising your steam plant, you are most welcome to visit any of our Spirax Sarco offices and approved distributors.

With over 40 Spirax Sarco trained professionals in this region ready to volunteer their expertise and services, we are confident that you will find the consultation with us greatly rewarding and beneficial to your company.

Website: www.spiraxsarco.com/sg Email: spiraxsin@sg.spiraxsarco.com



The Customer Satisfaction Survey 2007

This quarter of the year has always been the most exciting quarter as we start to compile the valuable feedback from you, our valued customers, via the customer satisfaction survey.



More often than not, we were thrilled by the responses as they reflect our customers' opinion and the level of customer satisfaction we have attained.

We are very thankful that you have responded to our survey, despite your busy schedule. As a gesture of appreciation, we have 40 Multi Card Readers to give away to the early respondents.

Congratulations to the winners and we wish you success and good harvest for the year ending 2007 and many opportunities for the year ahead.

Company	Winner
Accent Engineering Pte Ltd	David Huang
Aneka Coffee Industry	Ferry Darjanto
Baxter SA	K Saravanan
Caritas Medical Centre	Tang Chu Lam
Central Pertiwi Bahari	Roy Samuel
Charoen Pokphand Indonesia	Tri Biantoro
Coca Cola Bottling Indonesia	I Made Rapi
Dankos Farma	Erwinanto Setiawan
Djarum Kudus	Sugianto
Hotech Int'l HK Ltd	W H Luk
Indah Kiat Pulp & Paper	Seng Huat
Indent Industrial Trade Corp	Rosmelito Paclibar
Indorama	Zainal Arifin
Integrated Services & Operations Inc	Sara Regina Gonzalez



Q: I have the following questions:

1. How to maintain Steam Trap and when?
2. How to check performance of Steam Trap after it is repaired?
3. Is there any procedure for it?

Mochamad Arianto, PT CJ Indonesia - Pasuruan.

A: The starting point of any Trap Maintenance Programme is to know the Steam Traps in your Plant. These include the type of traps, their operating principles and applications. Checking or testing steam traps is not a pure science as personnel develop the "art" over years of experience – for example the colour of live steam and flash steam is different and unless one has the opportunity to work with trap discharges, it can be difficult to tell the difference. In addition, to be able to discern the different types of discharge patterns, one needs to acquire an understanding of the operating principles – light and heavy condensate loads will cause different traps to discharge condensate in a particular pattern. These include "blast discharge" and "dribbling".

To keep your traps in good operating condition, we would recommend the following to be carried out:

- Clean the trap strainers (integral or external) regularly.
- Conduct steam trap checks to monitor the operating condition of the trap – this may be via sight glass, by-pass valve, Spira-tec chamber and/or ultrasonic leak detector.
- Keep survey records of the steam traps such as the size, type, location and condition (tag numbers or reference to an equipment are always useful)
- Repair or replace any traps found leaking immediately (to minimize steam/feedwater wastage and stress on boilers)

Major Steam Trap manufacturers such as Spirax Sarco provide Installation and Maintenance Instructions on how to service their traps. For Spirax Sarco, contact the local Sales Office or simply download from our website www.spiraxsarco.com/sg.

After servicing the trap, conduct a test to check that it is working well. Simply connect the serviced / repaired steam trap to a steam supply fitted with a Spirax Spira-tec* Sensor Chamber.

Even if you are unable to carry out the above after servicing, it is highly recommended that the trap is checked once it is installed onto the system. (The associated apparatus or instruments to be used in conjunction have been mentioned above.)

*The advantages of employing the Spira-tec Steam Trap Monitoring System include unambiguous result – in other words, it will indicate precisely the steam trap condition. A green light will be illuminated if the steam trap is functioning normally, a red light if it is leaking and an orange light if it is water logging.

Contact your local Spirax Representative for more information.

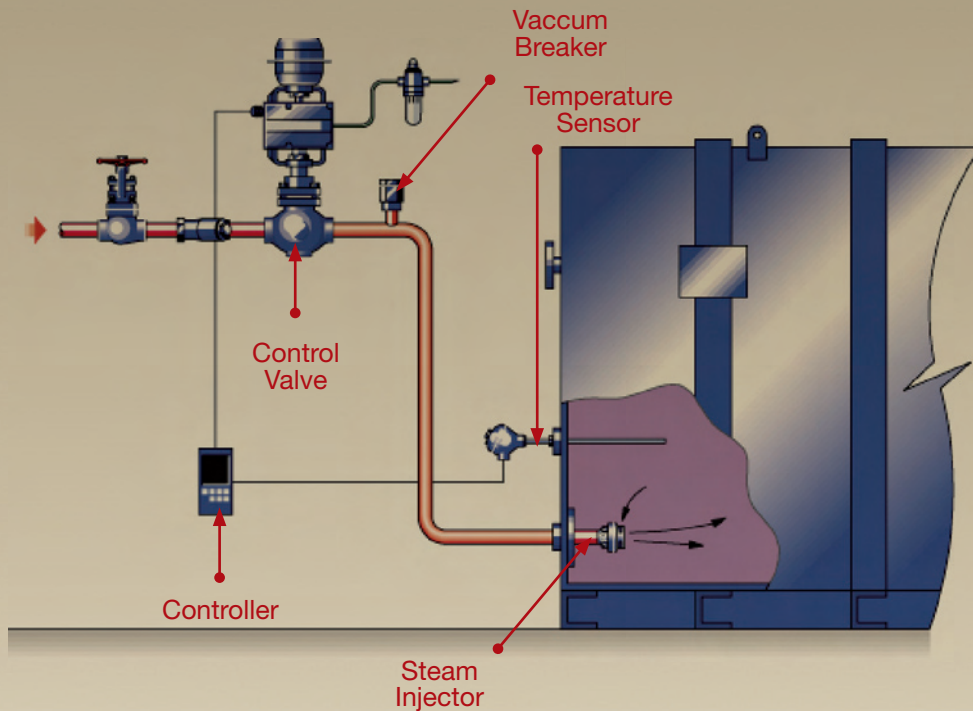
In this column, we feature customers' questions and answers provided by our Technical and Training Manager, Mr Chng Poh Beng.

Simply send your questions marked "Dear TC" to StephanieCheong@sg.spiraxsarco.com or to fax number 65-6459 6854. Kindly indicate if you do not wish to have your name and/or your company's name published. We reserve the right to edit the questions and not to publish them. If your question is published in Steam Express, you will receive a corporate gift.





Painless Steam Injection



Traditionally, steam is injected to a cool liquid to bring up its temperature via a sparge pipe.

A more effective solution is to use the engineered design of the injector body which is more sophisticated than a sparge pipe.

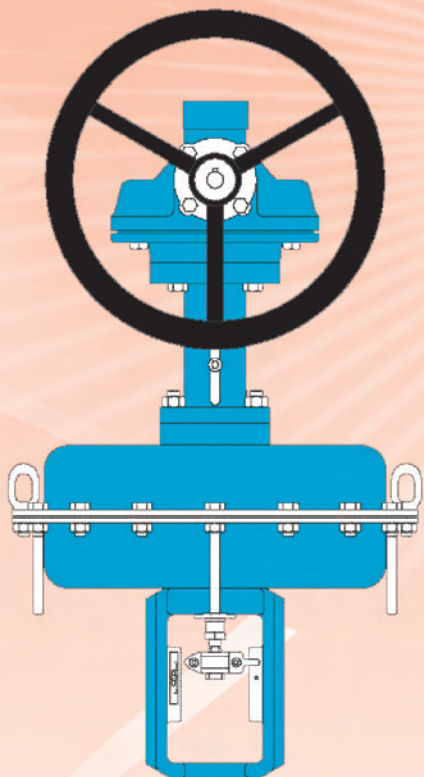
Apart from being able to be used at relatively high pressure, the steam injector ensures that thorough mixing of the steam and liquid occurs as a turbulent zone is created in the body. This has the effect of agitating and circulating the liquid so that a constant temperature is maintained, without stratification or cold spots in the tank.

Steam injectors have the added advantage of being more compact and shorter than sparge pipes and as such, will avoid contact / interference with other objects that may be dipped into the tank.

Company	Winner
JG Summit Petrochemical Corp	Francis-Nino Dalman
JGC Singapore Pte Ltd	Ho Soo Leang
Lamsan Inc	Segundino Villamil
Mega-Steam Engrg Pte Ltd	Alan Tong
Molindo Raya Industrial	Dany Witjaksono
Nestle Phils Inc	Ric Fernando
Nestle Vietnam Ltd	Nguyen Yuan Khoi
Pacific Rare Specialty Metals & Chemicals Inc	Francisco Bismonte Jr
Panarub Industry	Buya Wicaksono
Rapipak Asritama	Arthur C Laloan
Riau Andalan Kertas	Hery Ruswandi
Salim Plantations	Yan An
Sarihusada	FX Djarwadi
Sarihusada	Darmawan Wahyu P
Shin Nippon Air Technologies Co Ltd	Ruby Atienza Evangelio
Smart Tbk	Chandra
South Pacific Viscose	Emil Iskandar
Tanduy Distillers Inc	Danny Tan
The Garden Co Ltd	Y F Chan
The Polyolefin Company (S) Pte Ltd	Simon Chua
The Ritz-Carlton	Johnny Lai
Tyco Integrated Systems Phils	Danny Landicho
Ultra Prima Abadi	Fandy Kweejaya
Wilmar Group	Yusoveri
Wilmar Group	Sazinus
Wilmar International Ltd	Ong Ah Yong

Moving with time, Spirax Sarco is constantly making improvement for our range of products to support the dynamic changes of our customers' requirement.

The latest movement within our product ranges are:



1. Product Extension: Handwheel for PN9000 range of actuators

We are pleased to announce the release of the manual and gear Handwheel (H) for Spirax Sarco PN9000 range of actuators.

For actuators with high spring pressure ie Spirax Sarco PN9337, the gear operated handwheel will be recommended instead.

The handwheel assembly is of steel construction and with powder coat finish.



2. Product Improvement: BDV60 Blowdown Vessels

The BDV60 has been re-designed to direct the blowdown tangentially against an internal wear plate and vessel wall to remove any entrained air from blowdown. This can prevent the product from 'pitting' corrosion problem caused by the aeration of the cooling water in the vessel.

The improved BDV60 vessels are designed and constructed in accordance with the ASME VIII pressure vessel code allowing a minimum design temperature of -10°C as standard.

3. Product Extension: PF6-H High Temperature Piston Actuated Valve

With the introduction of Spirax Sarco's high temperature version of the Piston Actuated Valve, PF6-H, we can now further support our customers' application with an operating temperature of up to 190°C (11.5 barg saturated steam).

To support the high temperature service, stronger actuator material has been used. The actuator / body joint has been modified to evenly spread out the assembly stresses. The stem seal material has been changed to 25% carbon-graphite filled PTFE for better temperature resistance.



We have also incorporated to the new PF6-H a fixed valve head on sizes 1 1/4" to 2". This will eliminate vibration that can occur with high pressure / temperature differentials across the plug.