



Cert. No. LRQ 0963008

ISO 9001

PBX Series Quick Fit Connector Bimetallic Steam Traps

Description

Spirax Sarco's PBX bimetallic steam traps are made of 316L stainless steel. The connector block is available in stainless steel 316L or carbon steel to ASTM A105N. Pre-set and maintenance free, these steam traps can be mounted in any position, and once the connector is installed, the bimetallic trap assembly can be fitted in a few minutes without having to disturb the pipework. PBX steam traps are particularly suitable for food, pharmaceutical and oil industries, and are designed for a wide range of applications such as tracing, drips and draining collectors.

Standards

This product fully complies with the requirements of the European Pressure Equipment Directive 97/23/EC.

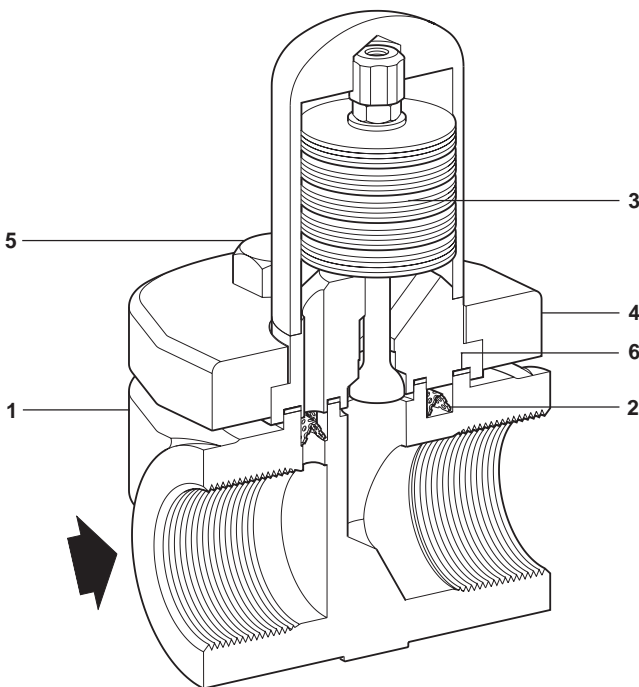
Certification

This product is available with certification to EN 10204 3.1.B. **Note:** All certification/inspection requirements must be stated at the time of order placement.

Sizes and pipe connections

½", ¾" and 1" screwed BSP/NPT and socket weld

DN15, DN20 and DN25 flanged PN40, ANSI 150 and ANSI 300

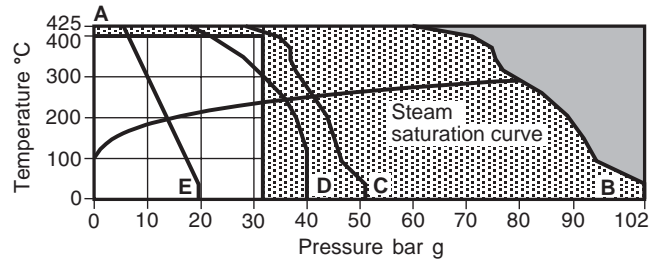


Materials

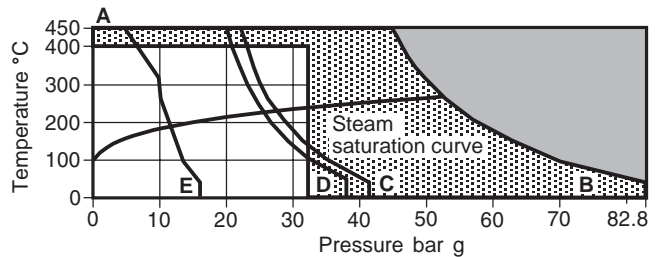
No.	Part	Material
1	Connector body	Stainless steel A182 F316L
		Carbon steel ASTM A105N
2	Strainer screen	Stainless steel AISI 304L
3	Bimetallic trap assembly	Stainless steel AISI 316L
4	Flange	Stainless steel or steel AISI 316L A105
5	Bolt	Stainless steel A4 - 80
6	Gasket	Graphite - stainless steel

Pressure/temperature limits

Carbon steel A105N



Stainless steel 316L



The product must not be used in this region.

The product should not be used in this region or beyond its operating range as damage to the internals may occur.

- A - B Screwed BSP/NPT and socket weld.
- A - C Flanged ANSI 300.
- A - D Flanged PN40.
- A - E Flanged ANSI 150.

Body design conditions	PN110, Class 600 to ANSI B 16.34	
PMA - Maximum allowable pressure	Stainless steel	82.8 bar g @ 37.8°C
	Carbon steel	102 bar g @ 37.8°C
TMA - Maximum allowable temperature	Stainless steel	450°C @ 45 bar g
	Carbon steel	425°C @ 60 bar g
Minimum allowable temperature	Stainless steel	-10°C
	Carbon Steel	-10°C
	PBX20	21.0 bar g @ 400°C
PMO - Maximum operating pressure	PBX30	32.0 bar g @ 400°C
	PBX40	12.0 bar g @ 400°C
	PBX50	21.0 bar g @ 400°C
TMO - Maximum operating temperature	400°C	
Minimum operating temperature	0°C	
Minimum operating pressure for satisfactory operation is:	PBX20	0.1 bar g
	PBX30	10.0 bar g
	PBX40	0.1 bar g
	PBX50	1.0 bar g
ΔPMX	The backpressure for correct operation must not exceed 90% of the upstream pressure.	
Designed for a maximum cold hydraulic test pressure of 124 bar g		

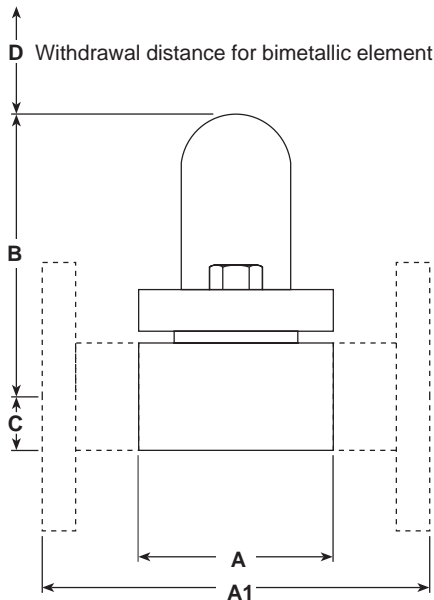
Dimensions/weights (approximate) in mm and kg

PBX20 and PBX30

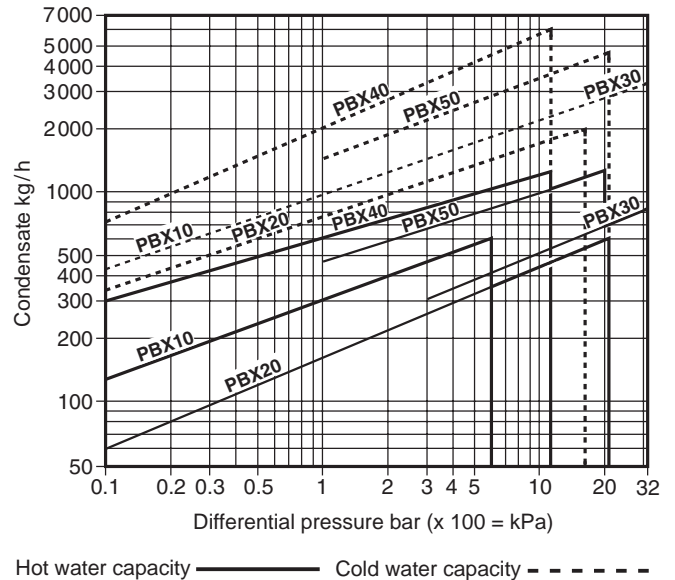
Size	A BSP / NPT / SW	A1	B	C	D	BSP / NPT / SW	Weight		
							PN40	ANSI 150	ANSI 300
½"	70	-	100	19	10	1.95	-	-	-
¾"	70	-	100	19	10	1.95	-	-	-
1"	80	-	100	24	10	2.10	-	-	-
DN15	-	150	100	-	10	-	4.0	3.0	4.5
DN20	-	150	100	-	10	-	4.2	3.6	4.7
DN25	-	160	100	-	10	-	4.5	3.9	5.0

PBX40 and PBX50

Size	A BSP / NPT / SW	A1	B	C	D	BSP / NPT / SW	Weight		
							PN40	ANSI 150	ANSI 300
½"	95	-	136	24	10	2.50	-	-	-
¾"	95	-	136	24	10	2.50	-	-	-
1"	95	-	136	24	10	2.50	-	-	-
DN20	-	150	136	-	10	-	4.5	4.0	5.5
DN25	-	160	136	-	10	-	4.8	4.2	5.8



Capacities



Safety information, installation and maintenance

For full details see the Installation and Maintenance Instructions (IM-P626-01) supplied with the product.

How to order

Example: 1 off Spirax Sarco ½" PBX30 bimetallic steam trap with stainless steel quick fit connector having ANSI 150 flanges.

Spare parts

The spare parts available are detailed below. No other parts are supplied as spares.

Available spares



Bimetallic trap assembly with gasket and strainer screen **2, 3, 6**

How to order spares

Always order spares by using the description given in the column headed 'Available spares' and state the size and model of the bimetallic steam trap.

Example: 1 - Bimetallic trap assembly with gasket and strainer screen for Spirax Sarco ½" PBX20 bimetallic steam trap.

Recommended tightening torques

Item	Option	 or  mm	N m
5	PBX20 PBX30	16 A/F	45 - 55
	PBX40 PBX50	19 A/F	45 - 55

