



Cert. No. LRQ 0963008

ISO 9001

spirax sarco

UTDM42L

TI-P154-06
ST Issue 4

Thermodynamic Steam Trap for use with Pipeline Connectors

Description

The UTDM42L is a fully maintainable thermodynamic steam trap manufactured in austenitic stainless steel with replaceable seat. It is designed for steam pressures up to 42 bar g. When installed with a suitable pipeline connector (available separately from Spirax Sarco) the UTDM42L can easily and simply be removed without breaking into the pipeline, thus speeding up trap replacement with minimal system downtime. Pipeline connectors are available with screwed, socket weld and flanged end connections.

Standards

This product fully complies with the requirements of the European Pressure Equipment Directive 97/23/EC.

Certification

This product is available with certification to EN 10204 3.1. **Note:** All certification/inspection requirements must be stated at the time of order placement.

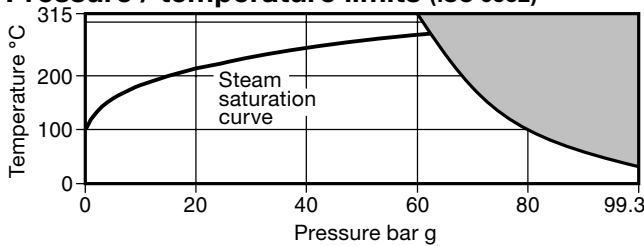
Pipeline connector options

The UTDM42L can be fitted to a variety of pipeline connectors:

PC10	Straight connector	ANSI/ASME 300 (TI-P128-10)
PC10HP	Straight connector	ANSI/ASME 600 (TI-P128-10)
PC20	Connector with 'Y' type strainer	ANSI/ASME 300 (TI-P128-15)
PC3	Connector with one piston isolation valve	ANSI/ASME 600 (TI-P128-02)
PC4	Connector with two piston isolation valves	ANSI/ASME 600 (TI-P128-03)

See the relevant Technical Information sheet as listed above for details of the connections available for each pipeline connector.

Pressure / temperature limits (ISO 6552)



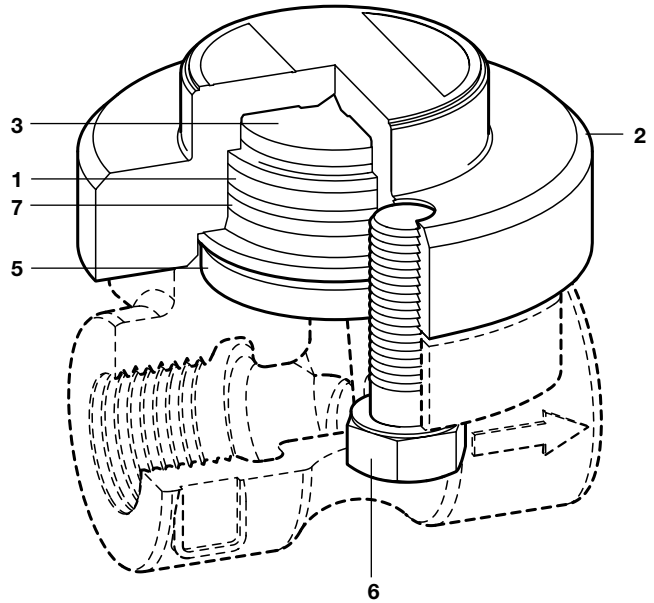
The product **must not** be used in this region.

Note: The model of pipeline connector and connections selected will dictate the maximum operating limits of the complete assembly. Reference the specific pipeline connector Technical Information sheet as detailed in 'Pipeline connector options'.

* Body design conditions	ANSI/ASME 600
PMA Maximum allowable pressure	99.3 bar g @ 38°C
TMA Maximum allowable temperature	315°C @ 60 bar g
Minimum allowable temperature	-50°C
PMO Maximum operating pressure for saturated steam service	42 bar g
TMO Maximum operating temperature	315°C @ 60 bar g
Minimum operating temperature	0°C
Note: For lower operating temperatures consult Spirax Sarco	
Minimum operating differential pressure for satisfactory operation	0.25 bar g
PMOB Maximum operating backpressure 80% of upstream pressure	
Designed for a maximum cold hydraulic test pressure of 149 bar g	

* When installed on an ANSI/ASME 600 rated connector.

Shown fitted to PC10HP connector



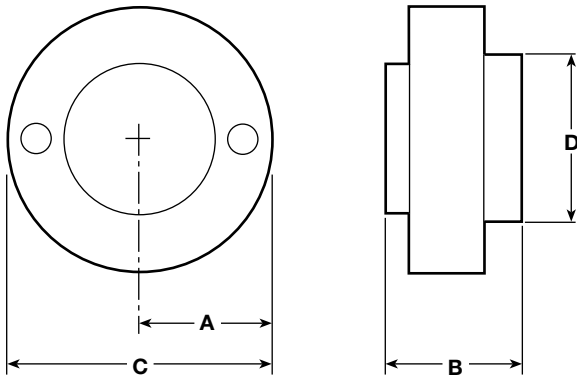
Materials

No.	Part	Material
1	Seat	Chromium steel BS 4659 Gr. BD2
2	Cover	Austenitic stainless steel ASTM A479 Gr. 304
3	Disc	Stainless steel BS 1449 420 S45
* 4	Inner gasket	Graphite / stainless steel laminate AISI 316 strip
5	Outer gasket	Graphite / stainless steel laminate AISI 316 strip
6	Connector screws	Steel ASTM A193 B7 3/8" x 1 1/4"
7	'O' ring seal	EPDM (modified)

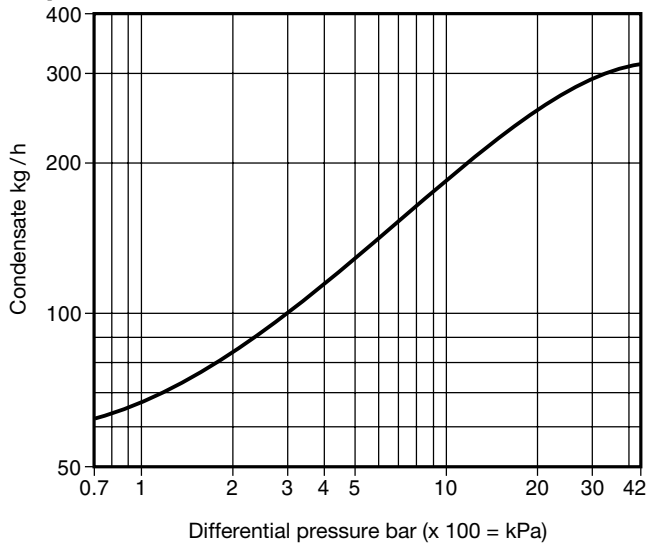
* **Note:** Item 4 is shown overleaf.

Dimensions/weight (approximate) in mm and kg

A	B	C	D	Weight
34	31	68	40	0.55



Capacities (in accordance with EN 27842)



Safety information, installation and maintenance

For full details see Installation and Maintenance Instructions (IM-P154-07) supplied with the product.

Installation note:

The pipework connector can be installed in either horizontal or vertical pipework.

Disposal

The UTDM42L trap unit is manufactured from stainless steel and is therefore totally recyclable. The 'O' ring/seal should be removed prior to disposal. No ecological hazard is anticipated with the disposal of this product provided due care is taken.

How to order

The UTDM42L is supplied in two parts:-

1. The swivel pipeline connector	PC10	Standard connection
	PC20	Standard connection plus 'Y' type strainer
	PC3_	One integral ISO valve
	PC4_	Two integral ISO valves

2. The UTDM42L trap complete with inner and outer gaskets (securely crimped in place) and two connector screws. These items will be supplied in a protective box.

Note: Any optional extras need to be specified at the time of order placement.

How to order example:

1 off UTDM42L thermodynamic steam trap - ANSI/ASME 600 rated. The unit is supplied complete with connector screws and gaskets.

1 off ½" PC10HP pipeline connector, ANSI/ASME 600 rating with NPT screwed connections.

Spare parts

The spare parts are shown in heavy outline. Parts drawn in broken line are not available as spares.

Available spare

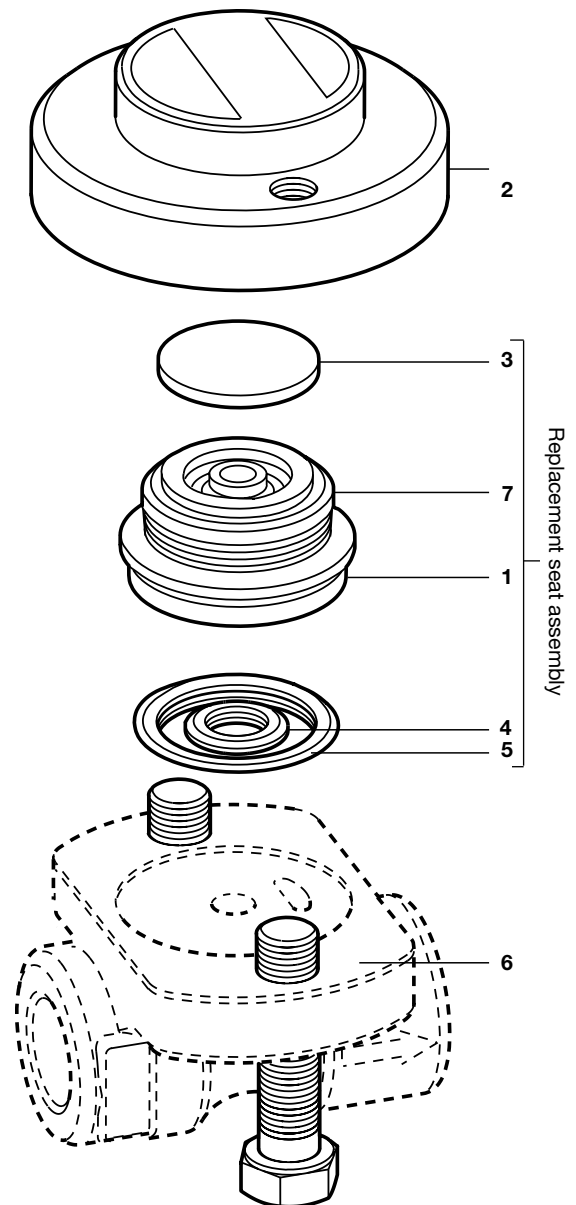
Connector screws	6 (2 off)
Replacement seat assembly	1, 3, 4, 5, 7
Complete UTDM42L trap unit	1, 2, 3, 4, 5, 6 (2 off) 7

How to order spares

Always order spare parts using the description given in the column headed 'Available spares' and state the Model No. and type of trap.

Example: 1 off replacement seat assembly for a UTDM42L thermodynamic steam trap.

Note: The replacement seat assembly is supplied as a unit with inner/outer gasket already assembled.



Recommended tightening torques

Item	mm or	N m
6	9/16" 3/8" - UNC	30 - 35