



Cert. No. LRQ 0963008

ISO 9001

spirax sarco

TI-P154-01
ST Issue 8

UTD30L, UTD30LA, UTD30H and UTD30HA

Thermodynamic Steam Traps with Swivel Connector

Description

The UTD30 series are stainless steel thermodynamic steam traps with integral strainer having an electroless nickel preparation finish (ENP) which is both energy efficient and corrosion resistant. They are attached to a suitable pipeline connector by two bolts for quick and easy replacement.

UTD30L - Low capacity for mains drainage and tracing applications. **UTD30LA** - Low capacity for mains drainage and tracing applications plus anti-air-binding disc.

UTD30H - For higher capacity applications. **UTD30HA** - For higher capacity applications plus anti-air-binding disc.

Standards

These products fully comply with the requirements of the European Pressure Equipment Directive 97/23/EC.

Certification

These products are available with certification to EN 10204 3.1. **Note:** All certification/inspection requirements must be stated at the time of order placement.

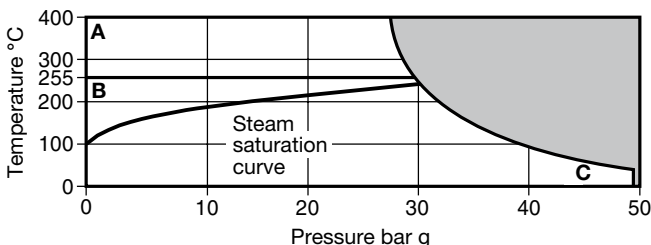
Pipeline connector options

The UTD30 can be fitted to a variety of pipeline connectors:

| | | | |
|------------------------|--|---------------|--------------|
| PC10 | Straight connector | ASME/ANSI 300 | (TI-P128-10) |
| PC10HP | Straight connector | ASME/ANSI 600 | (TI-P128-10) |
| PC3₋ | Connector with one piston isolation valve | ASME/ANSI 600 | (TI-P128-02) |
| PC4₋ | Connector with two piston isolation valves | ASME/ANSI 600 | (TI-P128-03) |

See the relevant Technical Information sheet as listed above for details of the connections available for each pipeline connector.

Pressure / temperature limits (ISO 6552)

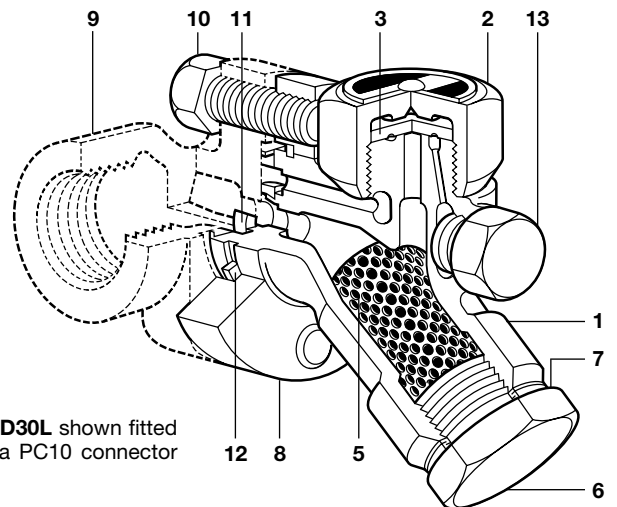
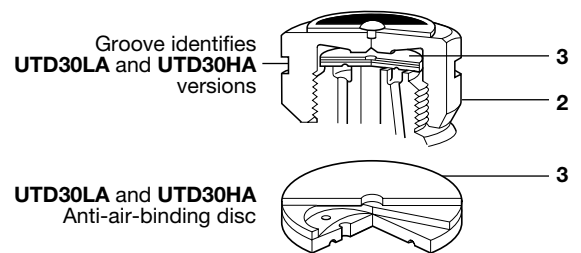


The product **must not** be used in this region.

A - C UTD30L and UTD30H
B - C UTD30LA and UTD30HA

Note: The model of pipeline connector and connection selected will dictate the maximum operating limits of the complete assembly. Reference the specific pipeline connector Technical Information sheet as detailed in 'Pipeline connector options'.

| | | |
|--|---|--------------------|
| Body design conditions | | PN50 |
| PMA | Maximum allowable pressure | 50 bar g @ 38°C |
| TMA | Maximum allowable temperature | 400°C @ 27.5 bar g |
| Minimum allowable temperature | | 0°C |
| PMO | Maximum operating pressure for saturated steam service | 30 bar g |
| TMO | Maximum operating temperature UTD30L and UTD30H | 400°C @ 27.5 bar g |
| | UTD30LA and UTD30HA | 255°C @ 30 bar g |
| Minimum operating temperature | | 0°C |
| Note: For lower operating temperatures consult Spirax Sarco | | |
| ΔPMX | Maximum differential pressure | 30 bar |
| PMOB | Maximum operating backpressure should not exceed 80% of the upstream pressure | |
| Minimum inlet pressure for satisfactory operation | | 0.25 bar g |
| Designed for a maximum cold hydraulic test pressure of 75 bar g | | |



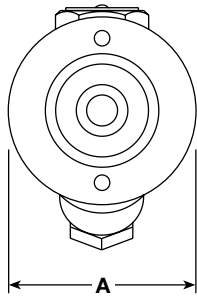
UTD30L shown fitted to a PC10 connector

Materials

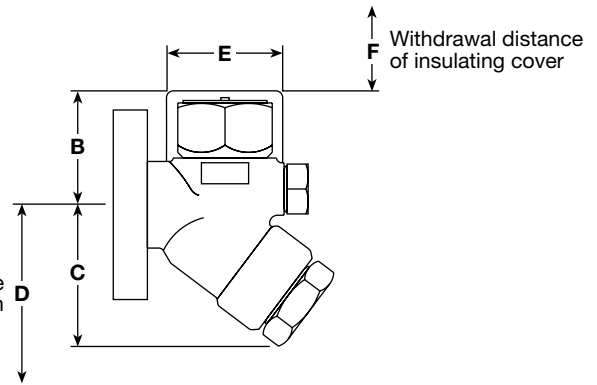
| No. | Part | Material |
|-----|-----------------------------|---|
| 1 | Body | Stainless steel/ ENP ASTM A743 Gr. CA 40 |
| 2 | Cap | Stainless steel ASTM A582 416 |
| 3 | Disc | UTD30L and UTD30H Stainless steel BS 1449 420 S45 |
| | | UTD30LA and UTD30HA Stainless steel Bimetal BS 1449 420 S45 |
| 5 | Strainer screen | Stainless steel BS 1449 304 S16 |
| 6 | Strainer cap | Stainless steel ASTM A582 416 |
| 7 | Strainer cap gasket | Stainless steel BS 1449 304 S16 |
| 8 | Flange | Alloy steel ASTM A322 Gr. 4140 |
| 9 | Pipeline connector | Stainless steel ASTM A351 CF8 |
| 10 | Connector screw | Steel ASTM A193 B7 |
| 11 | Inner gasket | Graphite/ AISI 316 strip Stainless steel laminate |
| 12 | Outer gasket | Graphite/ AISI 316 strip Stainless steel laminate |
| 13 | Plug | Stainless steel ASTM A276.431 |
| 14 | Insulating cover (optional) | Aluminium |

Dimensions / weights (approximate) in mm and kg

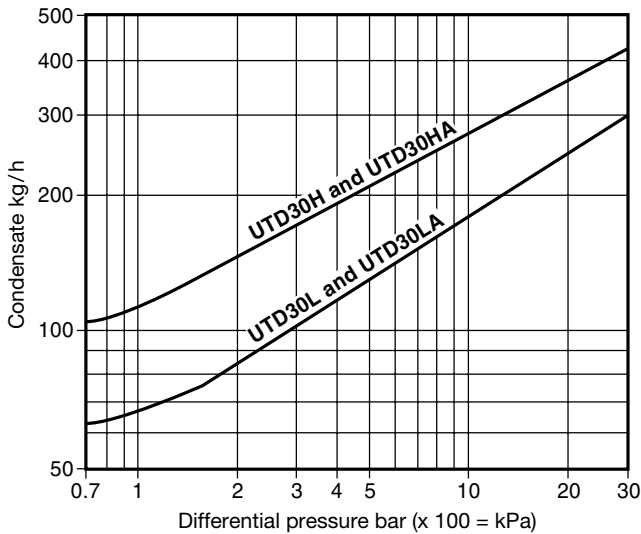
| A | B | C | D | E | F | Weight |
|----|----|----|----|----|----|--------|
| 67 | 41 | 55 | 85 | 57 | 38 | 1.10 |



Withdrawal distance for strainer screen



Capacities



Optional extras

Insulating cover: To prevent the trap being unduly influenced by excessive heat loss such as when subjected to low outside temperatures, wind, rain etc.

Integral blowdown valve: A BDV1 or BDV2 can be fitted to the strainer cap, alternatively the strainer cap can be drilled, tapped and plugged 3/8" BSP or NPT. Having either a BDV1 or BDV2 fitted will aid the removal of debris from the inside of the strainer screen. This should be carried out periodically depending on the cleanliness of the system.

How to order The UTD30 is supplied in two parts:-

1. **The swivel pipeline connector** PC10 Standard connection
PC3_ One integral ISO valve
PC4_ Two integral ISO valves
2. **The UTD30 trap** complete with inner and outer gaskets (securely glued in place) and two connector screws. Available as follows: UTD30L, UTD30H, UTD30LA or UTD30HA. Items will be supplied in a protective box.

Note: Any optional extras need to be specified at the time of order placement.

How to order example:

1 off Spirax Sarco DN20 PC10 swivel pipeline connector with socket weld connections.

1 off Spirax Sarco UTD30LA thermodynamic steam trap fitted with an anti-air-binding disc and BDV1 integral blowdown valve. The unit is supplied complete with connector screws and gaskets.

1 off Insulating cover to fit a UTD30LA.

Safety information, installation and maintenance

For full details see the Installation and Maintenance Instructions (IM-P154-02) supplied with the product.

Installation note:

The pipeline connector can be installed in either horizontal or vertical pipework but the trap body must always have the cap (2) uppermost.

Disposal:

This product is recyclable. No ecological hazard is anticipated with the disposal of this product providing due care is taken.

Spare parts

The spare parts available are shown in solid outline. Parts drawn in broken line are not supplied as spares.

Available spares

Complete trap unit assembled (state unit nomenclature), excluding pipeline connector.

| | | |
|-------------------------------------|---------------------|---------------|
| Gasket set (packet of 3) | | 11, 12 |
| Disc (packet of 3) | UTD30L and UTD30H | 3 |
| Strainer screen | UTD30L and UTD30H | 5 |
| Disc and strainer screen | UTD30LA and UTD30HA | 3, 5 |
| Strainer screen gasket | | 7 |
| Sensor assembly (state SS1 or WLS1) | | 8, 15 |
| Insulating cover | | 14 |

How to order spares

Always order spare parts by using the description given in the column headed 'Available spares' and state the size and type of trap.

Example: 1 off packet of 3 discs for a Spirax Sarco UTD30L thermodynamic steam trap with swivel connector.

