



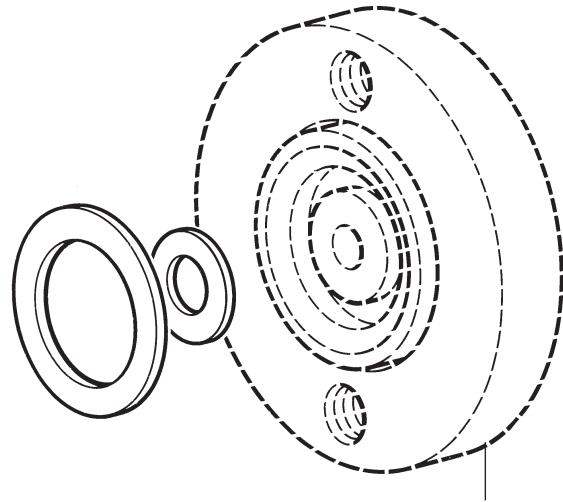
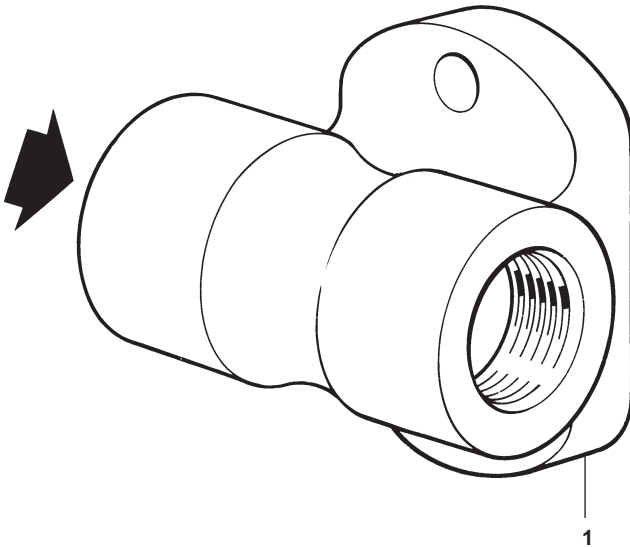
Cert. No. LRQ 0963008

ISO 9001

spirax sarco

TI-P128-10
ST Issue 4

PC10 and PC10HP Pipeline Connectors



Steam trap type to be specified
e.g. Spirax Sarco UBP, UTD, UIB, etc.

Description

The PC10 range of pipeline connectors are designed for use with swivel connector steam traps.

The principle is that the pipeline connector can be fitted into the pipeline, either horizontally or vertically. The steam trap can be fitted afterwards to the connector and can be rotated through 360° to ensure that the trap is in the horizontal plane.

Available types

Type	Rating	Description
PC10	ANSI/ASME 300	Pipeline connector (universal flow direction)
PC10HP	ANSI/ASME 600	Pipeline connector (universal flow direction)

Suitable for use with the following steam trap options:- UTD30, UTD42, UTD52, UBP30, UIB30 and UIB30H.

Sizes and pipe connections

Condensate inlet / outlet DN15, DN20 and DN25

Screwed BSP, NPT

Socket weld ends to ANSI B16.11/BS 3799 Class 3000

Optional equipment

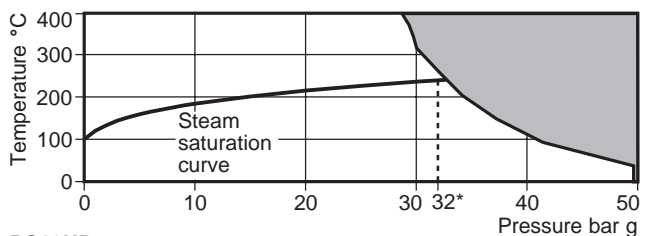
The Spirax Sarco DV depressurisation valve is recommended when using a PC10 pipeline connector.

Limiting conditions

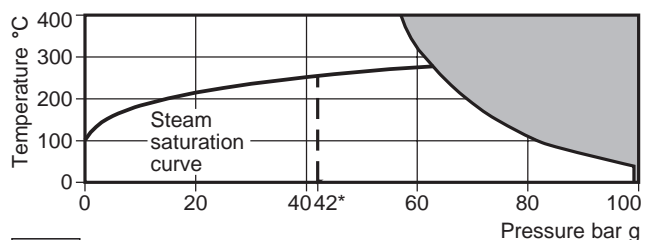
	PC10	PC10HP
Maximum body design conditions	ANSI/ASME Class 300 (PN50)	ANSI/ASME Class 600
PMA - Maximum allowable pressure	50 bar g	99.3 bar g
TMA - Maximum allowable temperature	400°C	400°C
Cold hydraulic test pressure	76 bar g	149 bar g

Operating range

PC10



PC10HP



■ The product must not be used in this region.

*PMO Maximum operating pressure recommended for saturated steam.

Materials

No.	Part	Material
1	Body	Austenitic stainless steel type 304 ASTM A 351 CF8

Certification

The product is available with certification to EN 10204 3.1.B for the body as standard.

K_v values

Size	DN15	DN20	DN25
K _v	1.1	1.1	1.1

For conversion: C_v (UK) = K_v x 0.963 C_v (US) = K_v x 1.156

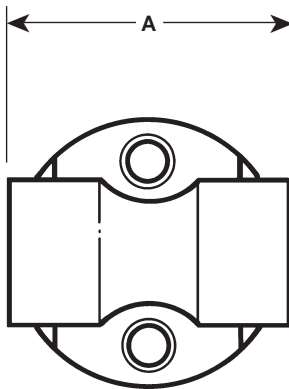
Local regulations may restrict the use of this product to below the conditions quoted.

In the interests of development and improvement of the product, we reserve the right to change the specification.

© Copyright 2004

Dimensions / weights (approximate) in mm and kg

Size	A	Weight
1/2"	61.5	0.6
3/4"	73.5	0.7
1"	90.0	0.7



Installation

There are two criteria which must be satisfied to ensure that the swivel connector trap will operate correctly and ensure effective condensate removal.

- The PC10 (or PC10HP) shall be installed with flow in the direction of the arrow.
Flow can be horizontal (either direction), vertical or inclined.
- The connection face for the swivel connector steam trap must always be in the vertical plane unless stated on relevant steam trap Installation and Maintenance Instructions.

After installation it is recommended that the pipeline connector is insulated to minimise radiated heat losses and to protect personnel from burns risk.

Note: some trap types should not be insulated.

Detailed instructions regarding welding socket weld versions are provided with the product.

See IM-P128-11 (PC10) and IM-P128-13 (PC10HP).

Where the PC10HP is installed in a ANSI/ASME 600 rated system a suitable ANSI/ASME 600 rated steam trap must be used such as the UTDM42L.

Suitable isolation valves must be installed to allow for safe maintenance/replacement.

Safety

Pressure

Before attempting any maintenance of the steam trap, consider what is or may have been in the pipeline. Ensure that any pressure is isolated and safely vented to atmospheric pressure before attempting to maintain the steam trap. This is easily achieved by fitting Spirax Sarco depressurisation valves type DV (see separate literature for details). Do not assume that the system is depressurised even when a pressure gauge indicates zero.

Temperature

Allow time for temperature to normalise after isolation to avoid the danger of burns and consider whether protective clothing (including safety glasses) is required.

Disposal

The product is recyclable. No ecological hazard is anticipated with disposal of this product providing due care is taken.

How to order

1/2" Spirax Sarco PC10HP pipeline connector in austenitic stainless steel socket weld to ANSI B16.11 Class 3000. ANSI/ASME 600 rated for use with UTDM42L steam trap.