



Cert. No. LRQ 0963008

ISO 9001

# spirax sarco

TI-P113-01  
ST Issue 6

## UIB30 and UIB30H

# Sealed Inverted Bucket Steam Traps (for use with Pipeline Connectors)

### Description

The UIB30 and UIB30H are sealed inverted bucket steam traps for either horizontal or vertical installation (with the cover hanging downwards). The UIB30 is designed for higher capacities. When installed with a suitable pipeline connector (available separately from Spirax Sarco) the UIB can easily and simply be removed without breaking into the pipeline, thus speeding up trap replacement with minimal system downtime. Pipeline connectors are available with screwed, socket weld and flanged end connections.

### Standards

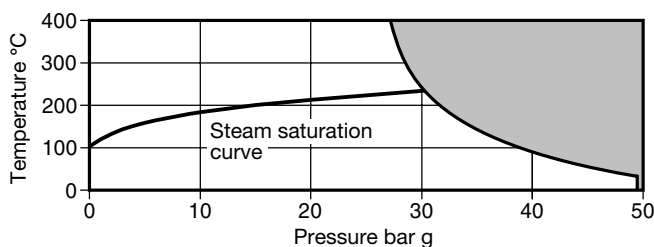
This product fully complies with the requirements of the European Pressure Equipment Directive 97/23/EC.

**Note:** The body/cover weld joint is to EN 288 and complies with ASME section IX.

### Certification

This product is available with certification to EN 10204 3.1. **Note:** All certification/inspection requirements must be stated at the time of order placement.

### Pressure/temperature limits (ISO 6552)



**The product must not be used in this region.**

**Note:** The model of pipeline connector and connections selected will dictate the maximum operating limits of the complete assembly. Reference the specific pipeline connector Technical Information sheet as detailed in 'Pipeline connector options'.

Body design conditions		PN50 (ANSI 300)
PMA	Maximum allowable pressure	50 bar g @ 38°C
TMA	Maximum allowable temperature	400°C @ 27.0 bar g
Minimum allowable temperature		-29°C
PMO	Maximum operating pressure for saturated steam service	30 bar g
TMO	Maximum operating temperature	400°C @ 27.5 bar g
Minimum operating temperature		0°C

**Note:** For lower operating temperatures consult Spirax Sarco

Δ PMX	Maximum differential pressure	30.0 bar	UIB30/4	UIB30H/5
		20.0 bar	UIB30/5	UIB30H/6
		12.0 bar	UIB30/6	UIB30H/7
		8.5 bar	UIB30/7	UIB30H/8
		5.0 bar		UIB30H/10
		4.0 bar	UIB30/8	
		2.5 bar	UIB30/10	
		2.0 bar		UIB30H/12
		1.5 bar	UIB30/12	

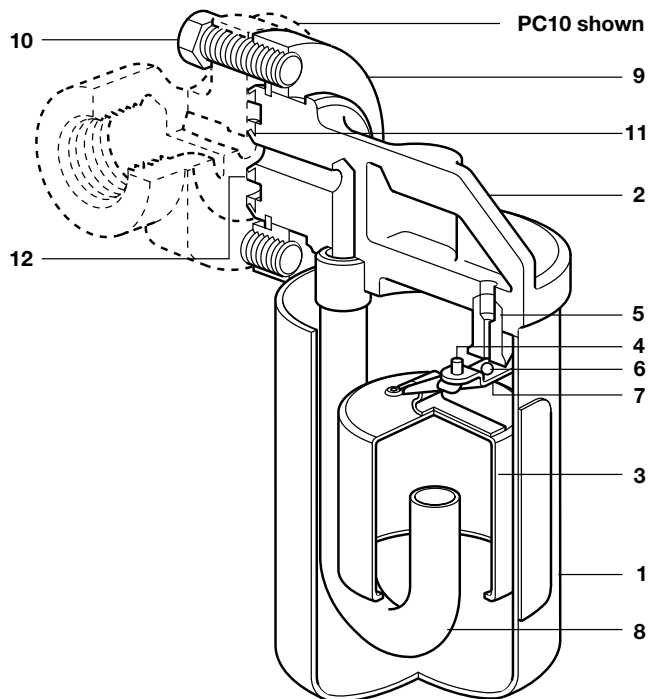
Designed for a maximum cold hydraulic test pressure of 75 bar g

### Pipeline connector options

The UIB can be fitted to a variety of pipeline connectors including:

PC10	Straight connector	ANSI/ASME 300	(TI-P128-10)
PC10HP	Straight connector	ANSI/ASME 600	(TI-P128-10)
PC20	Connector with 'Y' type strainer	ANSI/ASME 300	(TI-P128-15)
PC3_	Connector with one piston isolation valve	ANSI/ASME 600	(TI-P128-02)
PC4_	Connector with two piston isolation valve	ANSI/ASME 600	(TI-P128-03)

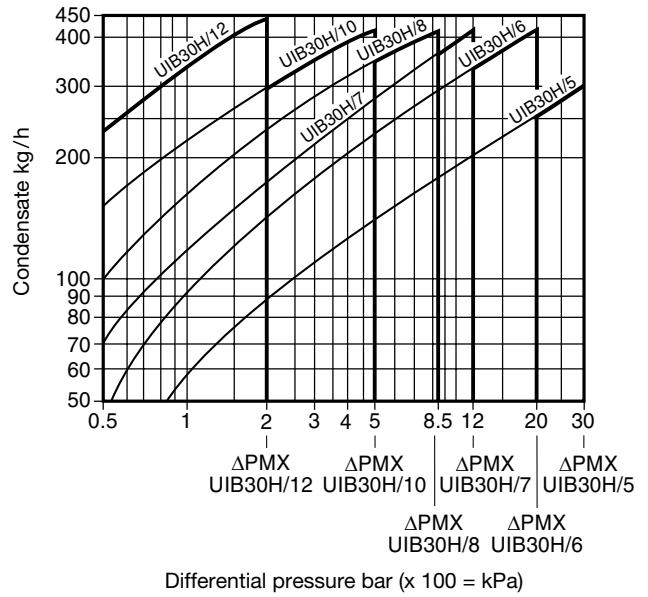
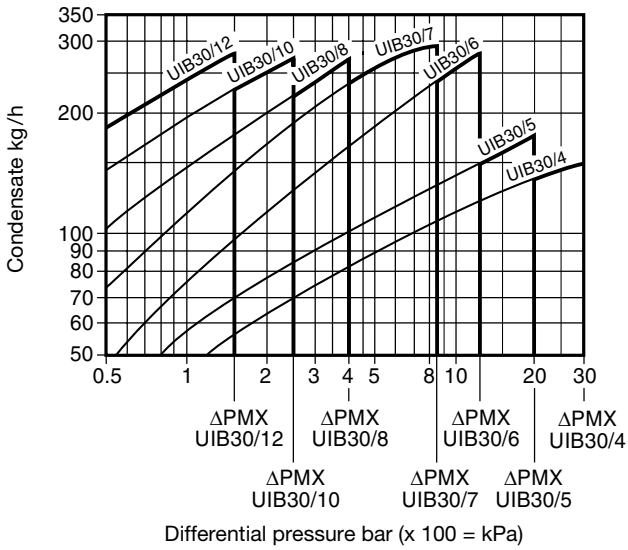
See the relevant Technical Information sheet as listed above for details of the connections available for each pipeline connector.



### Materials

No.	Part	Material	
1	Cover	Stainless steel	ASTM A240 Gr. 304
2	Body	Stainless steel	ASTM A351 CF8
3	Bucket	Stainless steel	BS 1449 321 S 12
4	Pivot pin	Stainless steel	BS 970 304 S 15
5	Valve seat	Stainless steel	AISI 440B
6	Valve	Stainless steel	AISI 440B
7	Valve lever	Stainless steel	BS 1449 321 S 12
8	Internal tube	Stainless steel	BS 3605 304 S 14
9	Flange	Alloy steel	ASTM A322 Gr. 4130
10	Connector screw	Steel	ASTM A193 B7
11	Inlet gasket	Graphite / stainless steel laminate	AISI 316 strip
12	Outlet gasket	Graphite / stainless steel laminate	AISI 316 strip

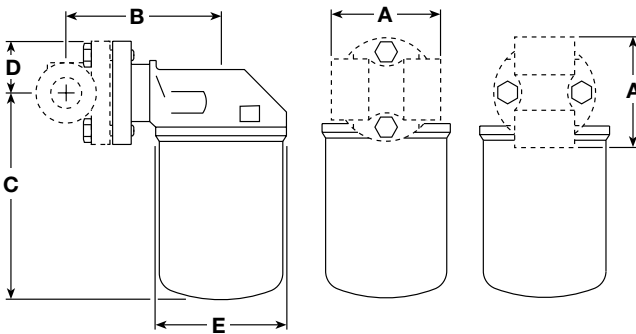
## Capacities



**Note:** Trap should be selected for the most appropriate working pressure differential and not on the basis of load. e.g. 80 kg/h at 7 bar differential should be handled with the UIB30/7 and not the UIB30/4.

## Dimensions/weights (approximate) in mm and kg

Size	A	B	C		D	E	Weight
			UIB30	UIB30H			
DN15 - 1/2"	61.5	86	124.5	159.0	33.5	80	2.19
DN20 - 3/4"	73.5	84	124.5	159.0	33.5	80	2.22
DN25 - 1"	90.0	87	124.5	159.0	33.5	80	2.38



**How to order** The UIB30 is supplied in two parts:-

<b>1. The swivel pipeline connector</b>	PC10	Standard connection
	PC20	Standard connection plus 'Y' type strainer
	PC3_	One integral ISO valve
	PC4_	Two integral ISO valves

**2. The UIB30 trap** complete with inner and outer gaskets (securely crimped in place) and two connector screws. These items will be supplied in a linen bag attached to the trap flange.

**Note:** Any optional extras need to be specified at the time of order placement.

**How to order example:**

**1 off 1/2" PC10** swivel connector having screwed NPT connections for use with a UIB30/4 sealed inverted bucket steam trap.

**1 off UIB30/4** sealed inverted bucket steam trap complete with gaskets and connector screws.

## Safety information, installation and maintenance

For full details see the Installation and Maintenance Instructions (IM-P113-02) supplied with the product.

### Installation note:

The pipeline connector can be installed in either horizontal or vertical pipework.

### Disposal:

The UIB30 trap unit is manufactured from stainless steel and is therefore totally recyclable. No ecological hazard is anticipated with the disposal of this product provided due care is taken.

## Spare parts

The spare parts available are shown in heavy outline. Parts drawn in broken line are not supplied as spares.

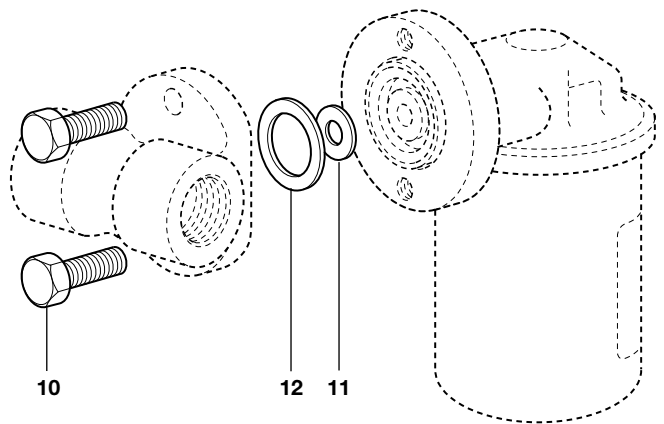
### Available spares

Connector screw and gasket set **10, 11, 12**

### How to order spares

Always order spares by using the description given in the column headed 'Available spares' and state the type of trap.

**Example:** 1 - Connector screw and gasket set for a Spirax Sarco UIB30 sealed inverted bucket steam trap.



## Recommended tightening torques

Item	Part	or mm	N m
10	Connector screws	9/16"	30 - 35