

CSM-K

high capacity clean steam generator



High capacity clean steam generator

Spirax Sarco, the world's leading steam system specialist, has combined modern technology with package design expertise to create the CSM-K, a high capacity generator capable of producing clean steam to the highest quality standards.

The microprocessor-controlled unit uses treated feedwater and plant steam to produce sterilizer-grade clean steam.

The CSM-K is fully HTM 2031 compliant.

The standard range covers clean steam duties up to 3 800 kg/h generated at 3 bar g.

The pre-assembled, skid-mounted package arrives factory tested and ready to be connected to your utilities.



PLC controlled
for simple operation

A high capacity unit,
offering maximum output
for minimum footprint

The standard range
of outputs are up to
3 800 kg/h



Factory tested

Maintainable
from all sides

Fully HTM 2031
compliant

All wetted parts on the
secondary side are
316L stainless steel

The range at a glance

Model CSM-K	401	402	403	501	502	503	601	602	603	604	702	703	704	802	803	804	
Clean steam production (kg/h)	260	320	370	500	620	700	930	1150	1300	1700	1730	2000	2630	2600	2900	3800	
Maximum dimensions (guidance) in mm	Length L	2900	3400	3700	3000	3500	3800	3300	3800	4000	4750	3900	4150	4900	4000	4000	5000
	Width W	1400	1400	1400	1500	1500	1500	1700	1700	1700	1700	1800	1800	1800	1900	1900	1900
	Height H	1600	1600	1600	1700	1700	1700	1900	1900	1900	1900	2050	2050	2050	2250	2250	2250

Clean steam generated at 3.5 bar g - With the feedwater inlet temperature at 20°C and 10 bar g primary steam pressure.

Typical nomenclature example: CSM-K702

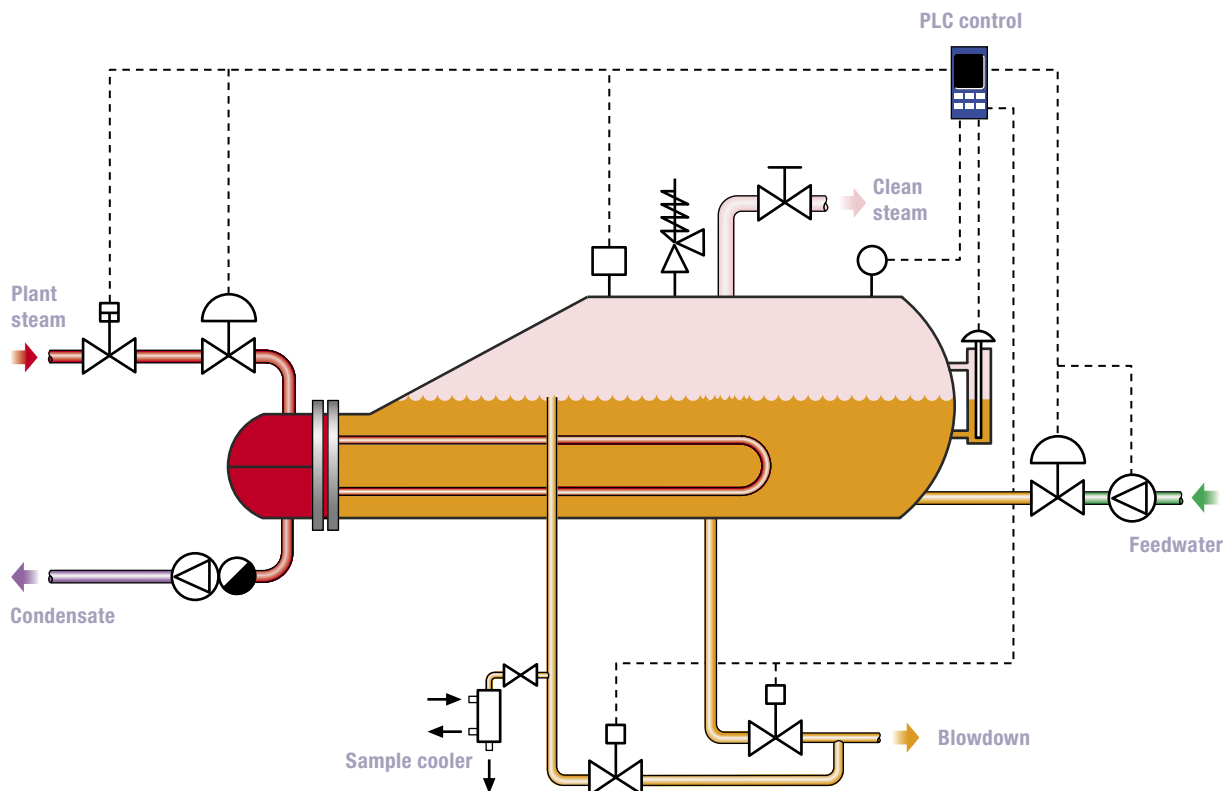


Applications

The CSM-K is ideal for use where steam purity and consistency of quality is critical to the process - some user examples are listed below. For other applications or industries please contact your Spirax Sarco representative.

Applications	Industries
Sterilizers	Healthcare
Sterilize in place (SIP)	Food and beverages
Direct injection into the product	Pharmaceuticals
Clean room humidification	Biotechnology
Operating environments	Electronics
Laboratories	Brewing

How does the CSM-K work?



The treated feedwater is heated by a primary plant steam heating coil. This evaporates the feedwater producing secondary clean steam.

The package promise

We have long recognised that our customers want assistance with complex steam applications which do not form part of their core business.

We will assess your clean steam requirements, provide pre-engineering services, supply and advise on the installation of the generator, and assist in start-up and commissioning.

You will deal solely with Spirax Sarco throughout the process and we will take on full responsibility, leaving you to do what you do best – running your business.

The CSM-K is a complete packaged solution to your clean steam needs. Its core design includes everything required to provide high quality steam for your clean process. A full range of options provides even further functionality, additional control choice and energy savings.

Spirax Sarco is a true turnkey vendor of clean steam systems. From initial assessment of customers clean steam needs, through design, manufacturing, documentation and validation, delivery and deployment, to maintenance and lifecycle support, we ensure all elements fit perfectly to achieve the highest system performance.



Key features and benefits

Key features

Key benefits



Proven design raises clean steam efficiently.

High quality clean steam meets the healthcare standards HTM 2010 and HTM 2031, and the requirements of EN 285.



Pre-assembled unit.

Minimal installation time and trouble-free commissioning.



Precisely matched automatic controls.

Clean steam supplied to your process at the correct pressure and flowrate however demand fluctuates.



Compact modular design.

Maximum output for minimum footprint.
Multiple units can be connected together side by side.



PLC control.

Rapid, simple commissioning.
Accurate operation.
User can easily view the operating parameters.



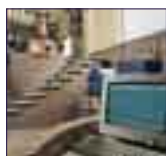
High quality, low maintenance components.

Reliable operation with low cost of ownership.



All wetted parts on the secondary side are 316L stainless steel.

Prevents risk of corrosion or contamination of clean steam supply.



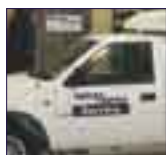
Can be connected to remote control system.

Flexibility of control and the convenience of remote monitoring.



Designed and built in full accordance with PED 97/23/EC.

Fully traceable manufacturing documentation available.



Range of service agreements to suit your requirements.

Safety and efficiency assured - you can concentrate on your core business while we do the rest.

Group companies

Africa

South Africa

Americas

Argentina
Brazil
Canada
Mexico
USA

Asia

China
India
Japan
Korea
Malaysia
Singapore
Taiwan
Thailand

Australasia

Australia
New Zealand

Europe

Austria
Belgium
Czech Republic
Denmark
Finland
France
Germany
Italy
Norway
Poland
Portugal
Russia
Slovak Republic
Spain
Sweden
Switzerland
UK

Sales offices

Africa

Egypt
Kenya
Nigeria

Americas

Colombia
Venezuela

Asia

Hong Kong
Indonesia
Pakistan
Philippines
Vietnam

Europe

Austria
Hungary
Ireland

Middle East

UAE

Distributors

Africa

Algeria
Cameroon
Ethiopia
Ghana
Ivory Coast
Libya
Malawi
Mauritius
Morocco
Namibia
Senegal
Sudan
Tanzania
Tunisia
Uganda
Zambia
Zimbabwe

Americas

Bolivia
Chile
Colombia
Costa Rica
Dominican Republic
Ecuador
El Salvador
Guatemala
Honduras
Jamaica
Nicaragua
Panama
Paraguay
Peru
Trinidad and Tobago
Uruguay
Venezuela

Asia

Bangladesh

Australasia

Fiji

Europe

Bulgaria
Croatia
Cyprus
Estonia
Greece
Iceland
Latvia
Lithuania
Malta
Netherlands
Romania
Slovenia
Turkey

Middle East

Bahrain
Iran
Jordan
Kuwait
Lebanon
Oman
Qatar
Saudi Arabia
Syria



Some products, services or solutions may not be available in certain markets

Spirax-Sarco Limited
Cheltenham UK
GL53 8ER
t: +44 (0)1242 521361
f: +44 (0)1242 573342
e: enquiries@SpiraxSarco.com
www.SpiraxSarco.com

spirax
/sarco

© Copyright 2007
Spirax Sarco is a registered trademark of Spirax-Sarco Limited