



Cert. No. LRQ 0963008

ISO 9001

Spiratec 센서내장형 IFT14 볼후로트식 스팀트랩

● 개요

IFT14 가 (R L)

WLS1 SS1
가 , IFT14

표준

European Pressure Equipment Directive 97/23/EC

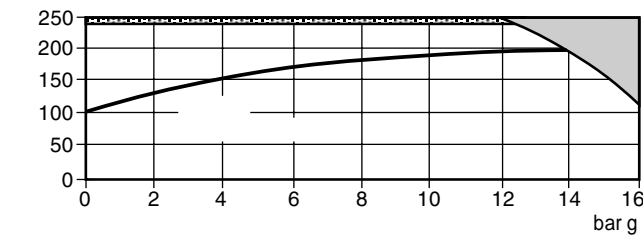
성적서

EN 10204 2.2 가

● 구경 및 배관연결방법

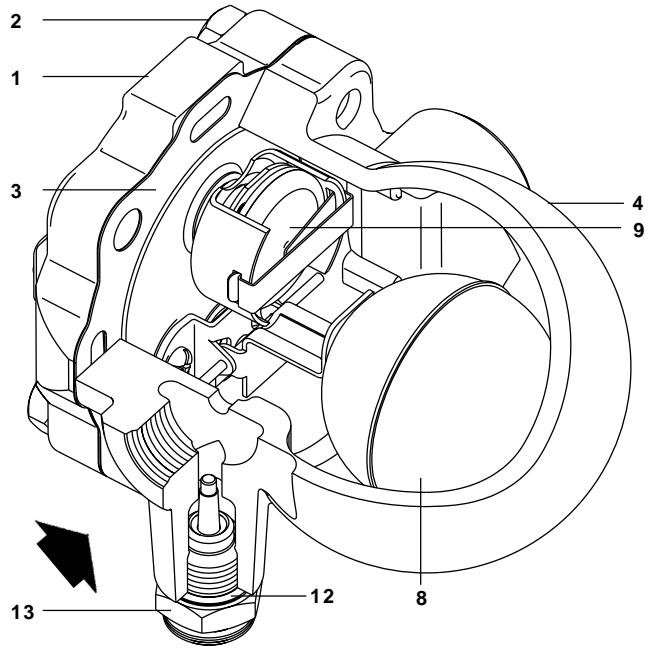
1/2", 3/4", 1" BSP, NPT

● 운전조건범위



가

몸체설계조건	PN16
최대허용압력(PMA) @ 120 °C	16 bar g
최대허용온도(TMA) @ 12 bar g	250 °C
최소허용온도	0 °C
최대사용압력(PMO)-포화증기 기준	14 bar g
최대사용온도(TMO) @ 12 bar g	240 °C
최소사용온도	0 °C
최대사용차압(ΔPMX)	IFT14-4.5 4.5 bar IFT14-10 10 bar IFT14-14 14 bar
수압시험압력	24 bar g
최대시험압력(PTMX)	24 bar g



● 재 질

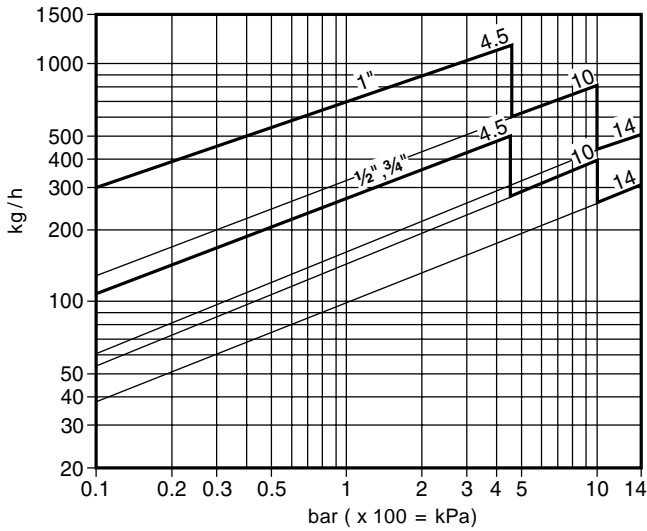
번호	부품명	재질
1	Body	SG iron DIN 1693 GGG 40
2	Cover bolts	Steel BS 3692 Gr. 8.8
3	Cover gasket	Reinforced exfoliated graphite
4	Cover	SG iron DIN 1693 GGG 40
* 5	Main valve seat	Stainless steel BS 970 431 S29
* 6	Main valve/air vent seat gasket	Stainless steel BS 1449 304 S11
* 7	Main valve assembly screws	Stainless steel BS 6105 CI A2-70
8	Ball float and lever	Stainless steel BS 1449 304 S16
9	Air vent assembly	Stainless steel
* 10	Pivot frame	Stainless steel BS 1449 304 S16
* 11	Pivot pin	Stainless steel
12	Sensor gasket	Stainless steel BS 1449 304 S16
13	Sensor	Stainless steel BS 1449 304 S16
14	Blanking plug (not shown)	Steel

* 5, 6, 7, 10, 11

Spiratec 센서내장형 IFT14 볼후로트식 스팀트랩

TI-P615-01
ST Issue 4
(KR 0502)

● 용량(ISO 7842)



가 가 ,
IFT14 - 4.5
50 % 가 , IFT14 - 10 IFT14 - 14
100 % 가 .

● 안전정보, 설치 및 정비 지침

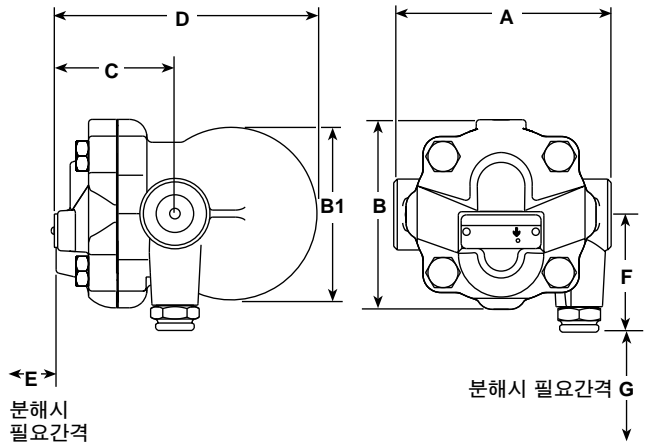
F01 - 03)

설치시 주의사항 :

IFT14
가

● 치수(mm) 및 무게(kg)

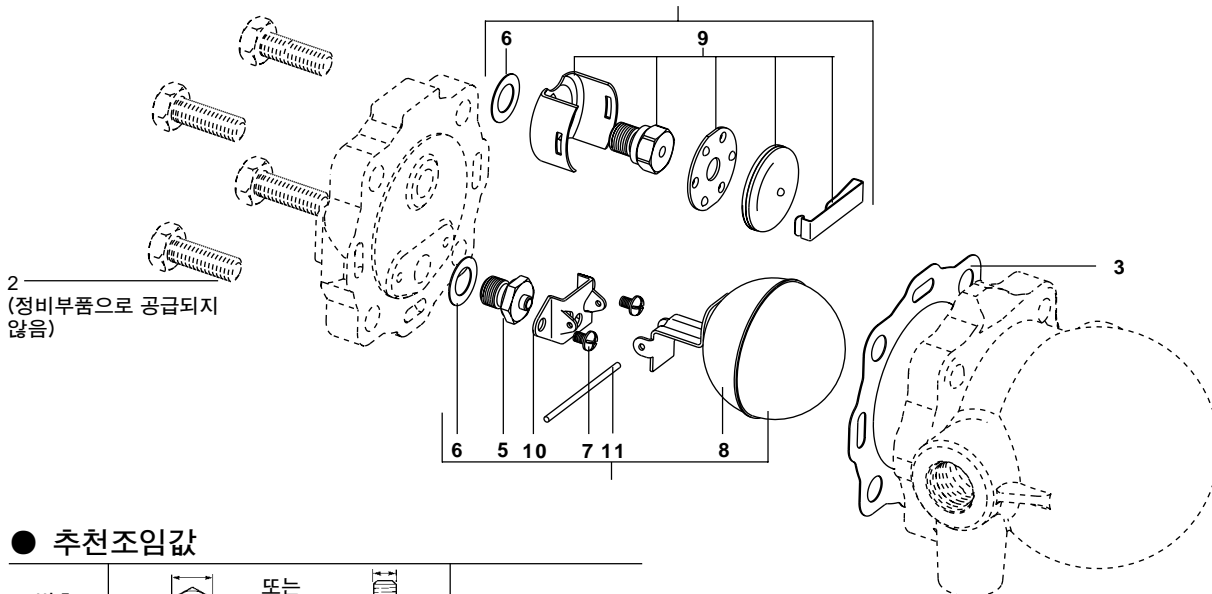
구경	A	B	B1	C	D	E	F	G	무게
1/2"	122.5	107	96	67	147	105	66	98	2.9
3/4"	122.5	107	96	67	147	105	66	98	2.9
1"	145.0	107	117	75	166	110	66	98	4.3



● 정비부품

정비부품명세

Main valve assembly with float	3, 5, 6, 7 (2 off), 8, 10, 11
Air vent assembly	3, 6, 9
Cover gasket (packet of 3)	3
Sensor and sensor gasket	12, 13



● 추천조임값

번호	또는 mm	N m
2	17 A/F	45 - 55
5	17 A/F	50 - 55
7	Pozidrive M4 x 6	2.5 - 3.0
9	17 A/F	50 - 55
13	24 A/F	50 - 55



한국스피라텍사코(주)

: TEL (02) 525-5755, FAX 525-5766,
()

: TEL (032) 820-3000, FAX 817-3473
ISO 9001