



Cert. No. LRQ_0963008

ISO 9001

M45 ISO 볼밸브(DN25 ~ DN150)

● 개요

M45 ISO
(Suspension)
ISO 가

● 타 입

M452V ISO	아연도금 탄소강 몸체, Viton 'O' ring
M452K ISO	아연도금 탄소강 몸체, Kalrez 'O' ring
M453V ISO	스테인레스강 몸체, Viton 'O' ring
M453K ISO	스테인레스강 몸체, Kalrez 'O' ring

● 선택사양

- 가
- 50 mm(2") 100 mm(4")
- 가
- ()

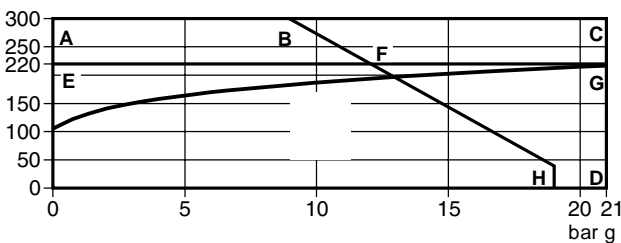
● 구경 및 배관연결방법

DN25, 40, 50, 65, 80, 100, 150
ANSI 150, ANSI 300

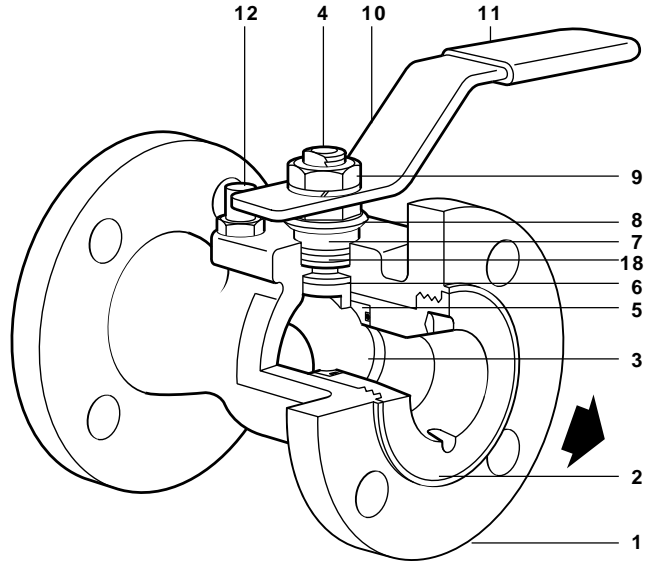
● 사용조건

몸체설계조건	BS 5351 적용		
최고사용온도	M45V	ANSI 150	220 °C @ 12 bar g
		ANSI 300	220 °C @ 21 bar g
	M45K	ANSI 150	300 °C @ 9 bar g
		ANSI 300	300 °C @ 21 bar g
최고사용압력(MOP)	M45V	ANSI 150	19 bar g @ 38 °C
		ANSI 300	21 bar g @ 220 °C
	M45K	ANSI 150	19 bar g @ 38 °C
		ANSI 300	21 bar g @ 300 °C
최고포화증기압력	ANSI 150	13 bar g	
수압시험압력	ANSI 300	21 bar g	
		1.5 x MOP	

● 운전조건범위

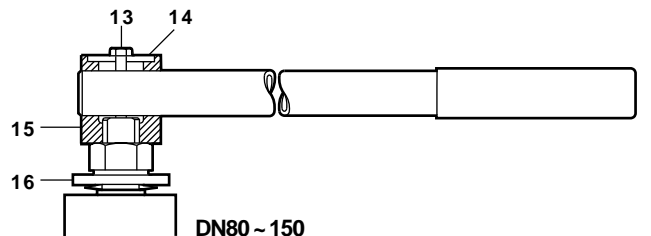


E - F - H ANSI 150 Viton A - B - H ANSI 150 Kalrez
E - G - D ANSI 300 Viton A - C - D ANSI 300 Kalrez



● 재 질

번호	부품명	재질
1	Body	Zinc plated carbon steel ASTM A 216 WCB
		Stainless steel ASTM A 351 CF8M
2	Insert	Zinc plated carbon steel SAE 1040
		Stainless steel AISI 316
3	Ball	Stainless steel (hardened) AISI 316 + CrN
4	Stem	Stainless steel AISI 316
5	Seat	Stainless steel (hardened) AISI 316 + CrN
6	Stem seal	PEEK
7	Separator	Zinc plated carbon steel SAE 1010 / 1045
8	Belleville washer	AISI 301
9	Stem nut	Zinc plated carbon steel SAE 12L14
10	Lever	Zinc plated carbon steel SAE 1010
11	Grip	Vinyl
12	Stop screw	Zinc plated carbon steel
13	Fixing screw	Zinc plated carbon steel
14	Support washer	Zinc plated carbon steel SAE 1045
15	Stem adaptor	Zinc plated SG iron
16	Stop plate	Zinc plated carbon steel SAE 1010
17	'O' ring	M45V Viton
		M45K Kalrez
18	Stem seal	PTFE Reinforced with graphite



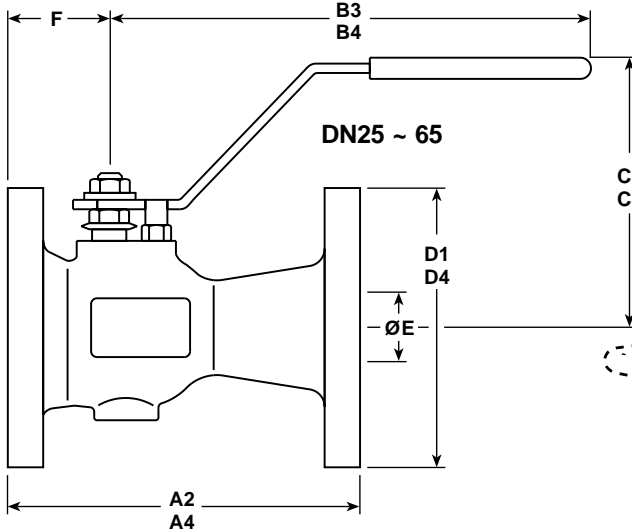
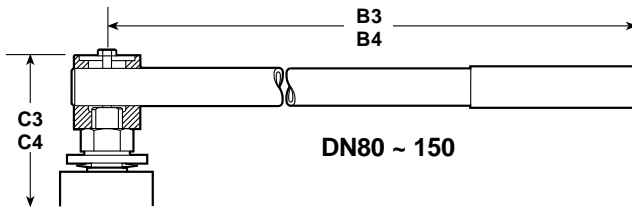
DN80 ~ 150

M45 ISO 볼밸브(DN25 ~ DN150)

● 치수(mm) 및 무게(kg)

ANSI 150

구경	A2	B3	C3	E	D1	F	무게
DN25	127	180	100	20	108	49	2.3
DN40	165	180	115	31	127	54	4.5
DN50	178	220	129	36	152	61	7.1
DN65	190	220	142	50	178	63	9.7
DN80	203	275	144	57	190	73	14.0
DN100	229	415	172	75	229	82	21.0
DN150	267	700	220	100	279	118	38.0



ANSI 300

구경	A4	B4	C4	E	D4	F	무게
DN25	165	180	100	20	124	59	4.10
DN40	190	180	115	31	156	64	7.65
DN50	216	220	129	36	165	69	9.60
DN65	241	220	142	50	191	75	13.50
DN80	283	275	153	57	210	87	20.40
DN100	305	415	178	75	254	97	32.40
DN150	403	700	220	100	318	118	62.00

● 기술사양

유량특성	등가개방형
포트	축소 내경
누수율	ANSI B 16.104 Class IV
정전기 방지	ISO 7121 및 BS 5351 적용

● Kv값

DN	25	40	50	65	80	100	150
K _v	26.5	81	94	197	248	479	641

$C_v (UK) = K_v \times 0.97$ $C_v (US) = K_v \times 1.17$

● 사용토크(N m)

DN	25	40	50	65	80	100	150
N m	12	20	25	60	80	200	400

● 정비부품 가

정비부품명세

Ball	3
Seat, stem seal set and 'O' ring	5, 6, 17, 18
Special tool (not shown) for the removal of insert (2)	

