



Cert. No. LRQ 0963008

ISO 9001

DPS17 감압 및 1차 압력 동시조절밸브

● 개요

DPS17

1

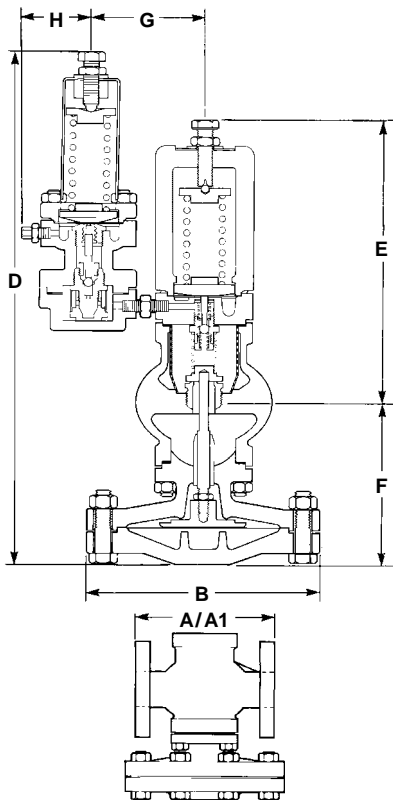
2

1

가

가

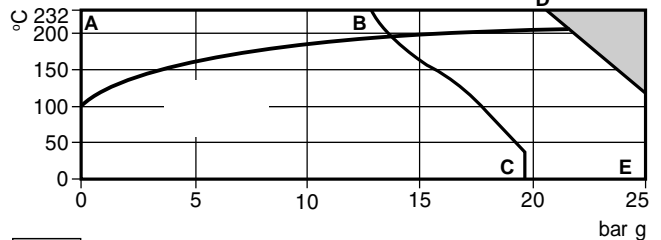
● 치수(mm) 및 무게(kg)



● 구경 및 배관연결방법

BSP NPT DN15LC, 15, 20, 25
KS10/16, PN16/25,
DN15LC, 15, 20, 25, 32, 40, 50
ANSI 300,
DN15LC, 15, 25, 32, 40, 50

● 운전조건범위



A-D-E BS 4505 PN25 ANSI 300 BS10 table H
A-B-C ANSI 150

2차측 압력조절범위

0.2 bar g ~ 3 bar g
2.5 bar g ~ 7 bar g
6.0 bar g ~ 17 bar g

● 용량(Kv값)

DN15LC	DN15	DN20	DN25	DN32	DN40	DN50
1.0	2.8	5.5	8.1	12.0	17.0	28.0

$C_V (UK) = K_V \times 0.963$ $C_V (US) = K_V \times 1.156$

참조 : 제시된 Kv값은 최대용량으로 이 밸브 뒤에서 설치하는 안전밸브의 구경을 선정시에 이용한다. 증기용에 적용할 경우 TI-P006-03, 압축공기인 경우 TI-P007-02를 참조한다.

● 사용조건

몸체설계조건	PN25
최대허용 설계압력(PMA) @ 120°C	25 bar g
최대허용 설계온도(TMA)	232 °C
최소허용온도	-10 °C
포화증기에 대한 최대운전압력(PMO)	17 bar g
최대운전온도(TMO)	232 °C
최소운전온도	0 °C
최대차압(ΔPMX)=PMO	
최대설계 수압시험압력	38 bar g
주 : 밸브가 완전히 조립되어 있는 상태에서 수압시험압력은 최대 25 bar g를 초과해서는 안된다.	

구경	나사식 A	BS 10H A1	PN16/25 A1	ANSI 300 A1	BS 10F A1	ANSI 150 A1	JIS 10/16 A1	B	D	E	F	G	H	나사식	무게 플랜지식
15LC	160	-	130	126.6	117	120.2	122	185	394	234	130	65	50	15	15.8
15	160	-	130	126.6	117	120.2	122	185	394	234	130	65	50	15	15.8
20	160	-	150	-	133	139.4	142	185	394	234	130	65	50	15	16.7
25	180	160	160	160	-	160	152	207	418	240	148	65	50	16	19
32	-	180	180	180	-	176	176	207	418	240	148	65	50	-	20
40	-	200	200	200	-	199	196	255	463	255	178	65	50	-	32
50	-	230	230	230	-	228	222	255	463	255	178	65	50	-	34.5

DPS17 감압 및 1차 압력 동시조절밸브

TI-P100-14
CH Issue 2
(KR 0411)

● 재 질

번호	부품명	재질	
1	Adjustment screw	Steel	BS 3692 Gr. 8.8
2	Adjustment lock-nut	Steel	BS 3692 Gr. 8
3	Washer	Stainless steel	BS 1449 304 S 16
* 4	Spring housing	SG iron	DIN 1693 GGG 40
5	Top spring plate	Brass	BS 2872 CZ 122
6	Pressure adjustment spring	Stainless steel	BS 2056 302 S 25
7	Bottom spring plate	Brass	BS 2872 CZ 122
8	Spring housing securing studs and nuts	Steel M10 x 50 mm	BS 4439 Gr. 8.8 BS 3692 Gr. 8
9	Pilot diaphragms	Phosphor bronze	BS 2870 PB 102 1980
* 10	Pilot valve housing	SG iron	DIN 1693 GGG 40.3
11	Pilot valve plunger	Stainless steel	BS 970 431 S 29
12	Spring housing cover	Stainless steel	BS 1449 304 S 12 2A
13	Pilot valve and seat unit	Stainless steel	BS 970 431 S 29
14	Internal strainer	Stainless steel	BS 1449 304 S 16
15	Body gasket	Compressed asbestos fibre	BS 2815 Gr. A
16	Main valve return spring	Stainless steel	BS 2056 302 S 25
17	Main valve	Stainless steel	BS 970 431 S 29
18	Main valve seat	Stainless steel	BS970 431 S 29
19	Pressure sensing pipe	Copper	BS 2871 C 106 ½H
* 20	Main valve body	SG iron	DIN 1693 GGG 40.3
21	Main body securing studs and nuts	Steel M10 x 25 mm	BS 4439 Gr. 8.8 BS 3692 Gr. 8
* 22	Main diaphragm chamber	SG iron	DIN 1693 GGG 40.3
23	Main diaphragm securing bolts and nuts	Steel M12 x 50 mm	BS 3692 Gr. 8.8 BS 3692 Gr. 8
24	Main diaphragms	Phosphor bronze	BS 2870 PB 102 1980
25	Main diaphragm plate	Brass	BS 2872 CZ 122
26	Push rod	Stainless steel	BS 970 431 S 29
27	Pipe assembly	Brass and copper	
28	Plug 1 BSP	Steel	
29	Pressure pipe union	Brass	
30	Lock-nut	Steel	BS 3692 Gr. 8
31	Surplussing pilot valve housing	Steel	DIN 17245 GSC 25
32	Surplussing pilot valve plunger	Stainless steel	BS 970 431 S29
33	Pilot valve and seat unit	Stainless steel	BS 970 431 S29
34	Internal strainer	Stainless steel	BS 1449 304 S16
* 35	Surplussing pilot valve plunger housing	SG iron	DIN 1693 GGG 40.3
36	Upstream sensing connection	Brass	

*이 부품은 주강(cast steel)에서도 이용할 수 있다.

