

spirax /sarco®

Installation and Maintenance Instructions

IM-3-0271-US

APRIL 2005

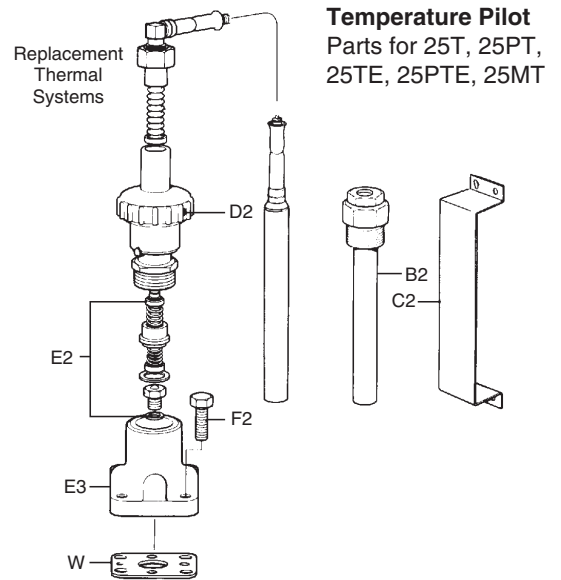
Pilot Rebuild Kit

Spare Parts – Pressure Pilot

Cover Plate w/ Retaining Ring	A4, B4
Adjustment Screw w/Nut & Upper & Lower Spring Support Disc	G4, H4, J4
Adjustment Spring	K4
Diaphragm	L4
Stem Guide w/Gasket (25P, 25PA & 25MP)	M4, N4
Stem Guide w/Seal & Gasket (25BP)	P4, Q4, R4
Head & Seat Assembly w/Gasket	S4, T4
Head & Seat Assembly (25MP)	J2
Head & Seat Assembly (25BP)	U4, V4
Square Gasket (Set of 3)	W
Screws & Gasket	F2, W
Solenoid Repair Kit (25E, 25PE, 25TE & 25PTE)	C3
Pilot Body w/Gasket & Cap Screws	B3

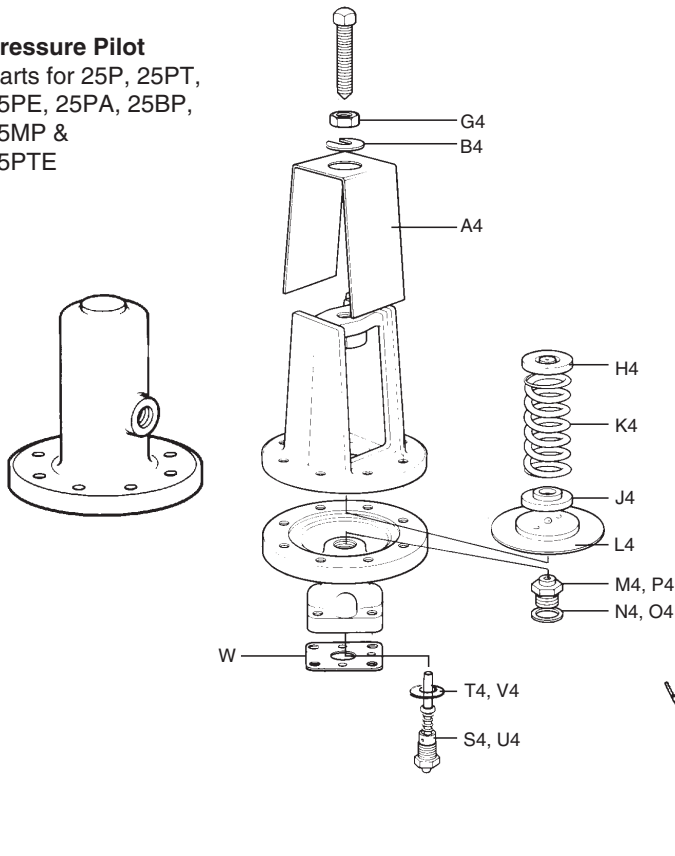
Spare Parts – Temperature Pilot

Adjustment Assembly	D2
Pilot Head & Guide Assembly w/Gasket, Seat & Seat Gasket	E2
Pilot Body w/Cap Screws & Gaskets	E3, F2, W
Well (Blub Style)	B2
Wall Mounting Bracket (T9)	C2



Pressure Pilot

Parts for 25P, 25PT, 25PE, 25PA, 25BP, 25MP & 25PTE



Temperature Pilot, Inspecting and Replacing Valve Head and Seat

Note: Inspecting and replacing parts, if necessary, can be done without removing the pilot from the main valve. However, if more convenient, the entire pilot can be removed from the main valve by removing the four cap screws.

Exception: To replace the seat in low pressure (15 psi and below) 2-1/2", 3", 4" and 6" valves, the entire pilot must be removed from the main valve or mounting bracket.

1. Unscrew hexagon nut and remove temperature adjustment assembly.
2. The pilot valve head assembly, which includes the springs, Teflon seal, and valve head, can then be withdrawn and inspected.
3. If it is found after inspection that the head is worn, the entire assembly should be replaced.
4. The pilot valve seat can be removed for inspection using a 1/2" hexagon socket wrench.
5. If the seat shows signs of wear, the seat should be replaced including a new seat gasket.

Pressure Pilot, Inspecting and Replacing Valve Head and Seat

1. Remove 4 pressure pilot flange cap screws and lift off pilot. Visual examination can then be made of the pilot valve head and seat.
2. Pilot valve head and seat are contained in one complete assembly.
3. To remove head and seat assembly, unscrew hexagon nut, using 11/16" hex wrench.
4. If it is found that either the head or seat is worn, the entire assembly should be replaced.

Inspecting and Replacing Pressure Pilot Valve Diaphragms

1. Turn adjustment screw counterclockwise until spring is slack.
2. Remove cap screw. Pilot yoke can then be removed.
3. The 2 metal diaphragms can then be inspected for distortion or possible fracture as a result of abnormal operation.
4. At the same time, any accumulation of dirt or foreign material should be removed from the lower diaphragm pilot case.
5. When replacing diaphragms, make certain casting surface is clean to insure a steam tight joint. Application of a plastic compound on the casting surface, such as Garlock 101, is recommended.
6. Position pilot yoke on lower diaphragm pilot casting making certain that the yoke is properly centered.
7. Tighten all cap screws uniformly.

For any additional information you may require, contact:
Spirax Sarco Applications Engineering Department
Toll Free 1-800-833-3246

spirax
/sarco®

SPIRAX SARCO, INC. • 1150 NORTHPOINT BLVD. • BLYTHEWOOD, SC 29016
PHONE 803-714-2000 • FAX 803-714-2222
WWW.SPIRAXSARCO.COM/US