

spirax/sarco®

Drip Pan Elbow

The Drip Pan Elbow, when used in conjunction with a safety relief valve, provides a suitable unrestricted, self-draining outlet. This improves the performance and longevity of the safety valve by alleviating axial loads on the valve, which could impair its operation and shut off.

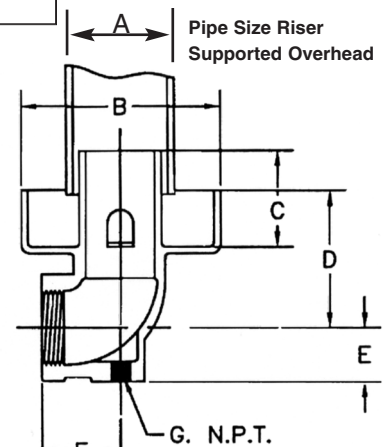
Model ⇄	DPE	
Sizes	3/4" to 4"	6" & 8"
Connections	Female NPT	Flanged ANSI 125
Construction	Cast Iron (ASTM A126 CL B)	

Typical Applications

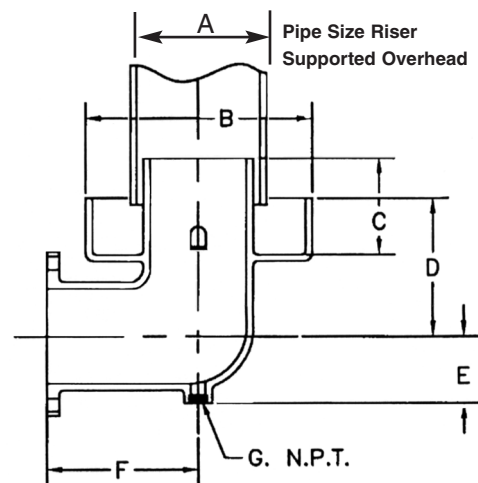
Specifically for use on the outlet connection of safety/relief valves to assure unrestricted discharge.

Dimensions (nominal) in inches and millimeters

SIZE INLET in/mm	A in (mm)	B in (mm)	C in (mm)	D in (mm)	E in (mm)	F in (mm)	G. NPT in (mm)	Weight Lb. (kg.)
3/4" (20)	2.00 (51)	3.75 (95)	1.88 (48)	2.00 (51)	1.00 (25)	1.50 (38)	3/8 (10)	2 (1)
1" (25)	2.00 (51)	3.75 (95)	1.88 (48)	2.00 (51)	1.00 (25)	1.50 (38)	3/8 (10)	2 (1)
1-1/4" (32)	2.00 (51)	5.50 (140)	2.47 (63)	4.13 (105)	1.44 (37)	2.13 (54)	3/8 (10)	7.5 (3)
1-1/2" (40)	2.00 (51)	5.50 (140)	2.47 (63)	4.13 (105)	1.44 (37)	2.13 (54)	3/8 (10)	7.5 (3)
2" (50)	3.00 (76)	6.25 (159)	2.31 (59)	3.63 (92)	1.63 (41)	2.25 (57)	1/2 (15)	8.5 (4)
2-1/2" (65)	4.00 (102)	7.38 (187)	3.00 (76)	4.31 (109)	1.94 (49)	2.69 (68)	3/4 (20)	12 (5)
3" (80)	4.00 (102)	8.00 (203)	3.050 (78)	4.88 (124)	2.31 (59)	3.13 (80)	3/4 (20)	19 (9)
4" (100)	6.00 (152)	9.63 (245)	4.50 (114)	5.75 (146)	2.88 (73)	3.75 (95)	3/4 (20)	25 (11)
6" (150)	8.00 (203)	12.75 (324)	6.63 (168)	7.44 (189)	4.19 (106)	8.00 (203)	3/4 (20)	105 (48)
8" (200)	10.00 (254)	16.50 (419)	7.50 (191)	9.44 (240)	5.38 (137)	10.75 (273)	1 (25)	202 (92)



Sizes: 3/4" - 4"
Construction Material: A126-B Cast Iron



Sizes: 6" - 8"
Construction Material: A126-B Cast Iron

Limiting Operating Conditions

Max. Operating Pressure (PMO) 250 psig (17 barg)
Max. Operating Temperature (TMO) 450°F (232°C) at all operating pressures

Installation

The Drip Pan Elbow is to be connected to the discharge connection of the safety/relief valve by a short pipe nipple. Flanged valves 4" and smaller will require a companion flange and short nipple the same size as the valve outlet. The drain connection on the bottom of the elbow should be piped to waste. Please refer to ASME code for additional installation details.

Sample Specification

Drip Pan Elbows for use with safety/relief valves shall be ASTM A126 CL B Cast Iron, and be of the same size as the valve outlet or larger. Pipe as shown on the drawings.