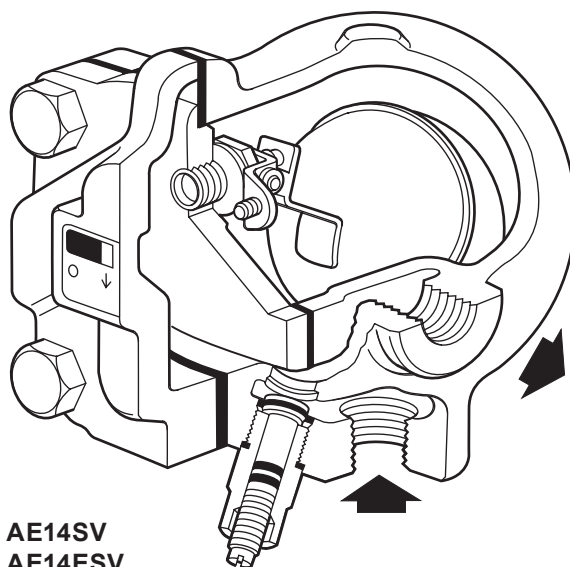




AE14 SG Iron Automatic Air Vents for Liquid Systems



Description

AE14 The AE14 is a range of float type air vents for liquid systems. The body and cover are manufactured in SG iron and the complete unit is readily maintainable. The standard version with a viton valve cone is designated AE14. This model is also available with an inbuilt stop valve fitted to the inlet port designated AE14SV and AE14ESV.

AE14E The AE14E is a Water Research Centre (WRc) approved version with an EPDM valve cone. This model is also available with an inbuilt stop valve fitted to the inlet port designated the AE14ESV.

AE14S The AE14S is a stainless steel valve cone version.

Available types

AE14 Fitted with a viton valve head (standard version)


AE14E Fitted with an EPDM valve head

AE14S Fitted with a stainless steel valve head

AE14SV Fitted with a viton valve head and stop valve

AE14ESV Fitted with an EPDM valve head and stop valve

Standards

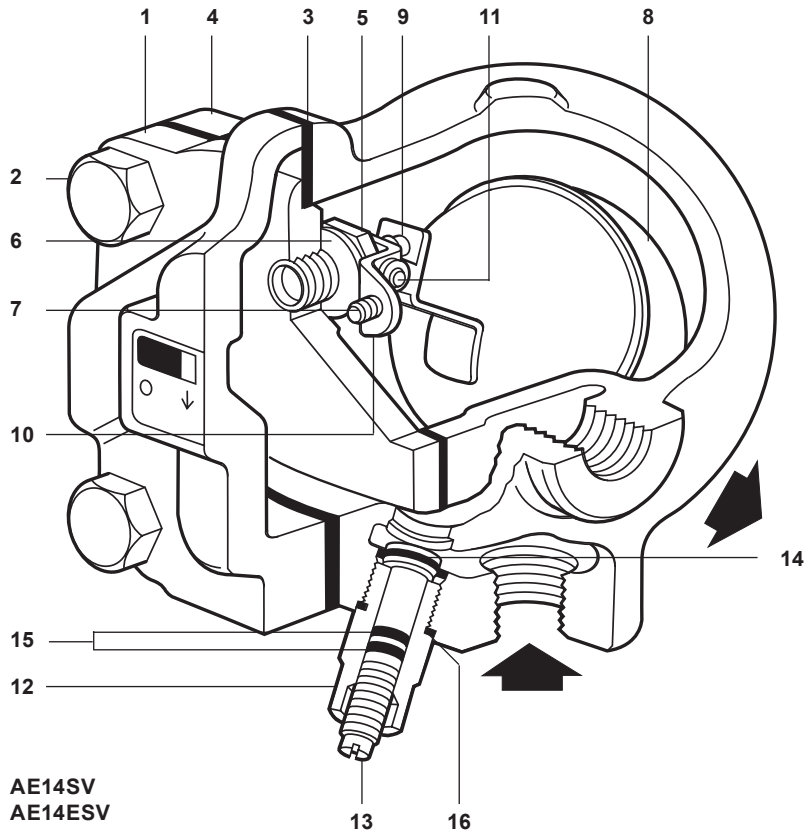
These products fully comply with the requirements of the Pressure Equipment Directive (PED) and carry the  mark when so required.

Certification

The product is available with material certification to EN 10204 2.2.

Note: All certification/inspection requirements must be stated at the time of order placement.

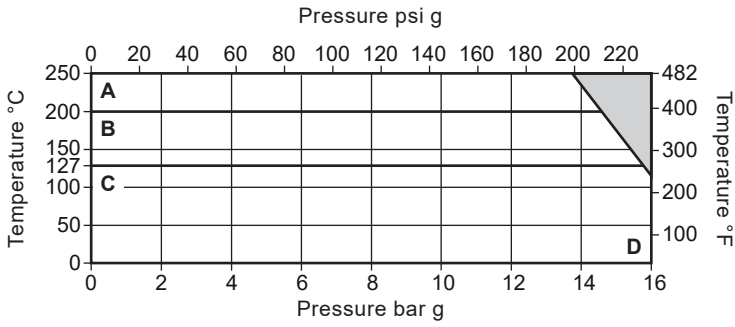
Materials



No.	Part	Material		
1	Body	SG iron	DIN 1693 GGG 40	
2	Cover bolt	Steel	BS 3692 Gr. 8.8	
3	Cover gasket	Reinforced exfoliated graphite		
4	Cover	SG iron	DIN 1693 GGG 40	
5	Main valve seat	Stainless steel	BS 970 431 S29	
6	Main valve seat gasket	Stainless steel	BS 1449 304 S11	
7	Main valve assembly screws	Stainless steel	BS 6105 CI A2-70	
8	Ball float and lever	Stainless steel	BS 1449 304 S16	
9	Valve head	AE14, AE14SV	Viton	
		AE14E, AE14ESV	EPDM	WRc 9205519
		AE14S	Stainless steel	AISI 440B
10	Pivot frame	Stainless steel	BS 1449 304 S16	
11	Pivot pin	Stainless steel		
12 *	Stop valve housing	Brass	BS 2874 CZ 121 3Pb	
13 *	Stop valve spindle	Brass	BS 2874 CZ 121 3Pb	
14 *	Stop valve head	Brass	BS 2874 CZ 121 3Pb	
15 *	'O' rings	Synthetic rubber	Fluorocarbon	
16 *	Stop valve gasket	Copper	BS 2870 C 101	

* **Note:** Parts 12 to 16 are used for AE14ESV and AE14SV only.

Pressure/temperature limits



The product **must not** be used in this region.

A - D AE14S

B - D AE14 and AE14SV

C - D AE14E and AE14ESV

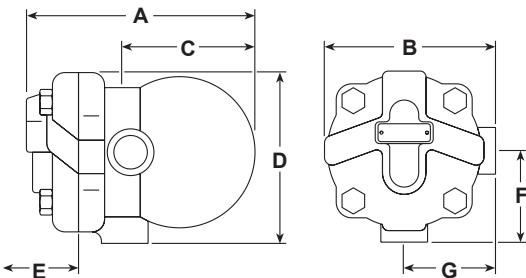
Body design conditions	PN16	
PMA Maximum allowable pressure @ 110 °C (230 °F)	16 bar g	(232 psi g)
TMA Maximum allowable temperature @ 13.6 bar g (197.3 psi g)	250 °C	(482 °F)
Minimum allowable temperature	0 °C	(32 °F)
PMO Maximum operating pressure	16 bar g	(232 °F)
	AE14E and AE14ESV @ 15.5 bar g (224.5 psi g)	127 °C (261 °F)
TMO Maximum operating temperature	AE14 and AE14SV @ 14.5 bar g (210 psi g)	200 °C (392 °F)
	AE14S @ 13.6 bar g (197.3 psi g)	250 °C (482 °F)
Minimum operating temperature	0 °C	(32 °F)
ΔPMX Maximum differential pressure	14 bar g	(203 psi g)
Designed for a maximum cold hydraulic test pressure of:	24 bar g	(348 psi g)
Minimum specific gravity of liquid	0.6	

Dimensions/weights (approximate)

AE14, AE14E, AE14S

mm and kg

Size	A	B	C	D	E	F	G	Weight
1/2"	147	114	80	114	105	60	60	2.5
3/4"								



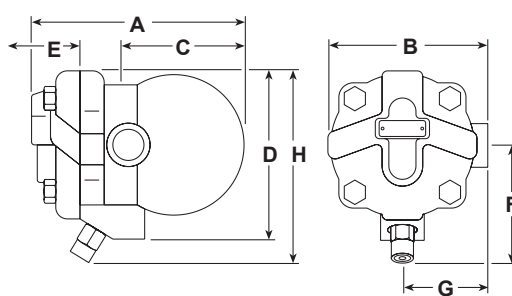
inches and lbs

Size	A	B	C	D	E	F	G	Weight
1/2"	5.78	4.48	3.14	4.48	4.13	2.36	2.36	5.51
3/4"								

AE14ESV, AE14SV

mm and kg

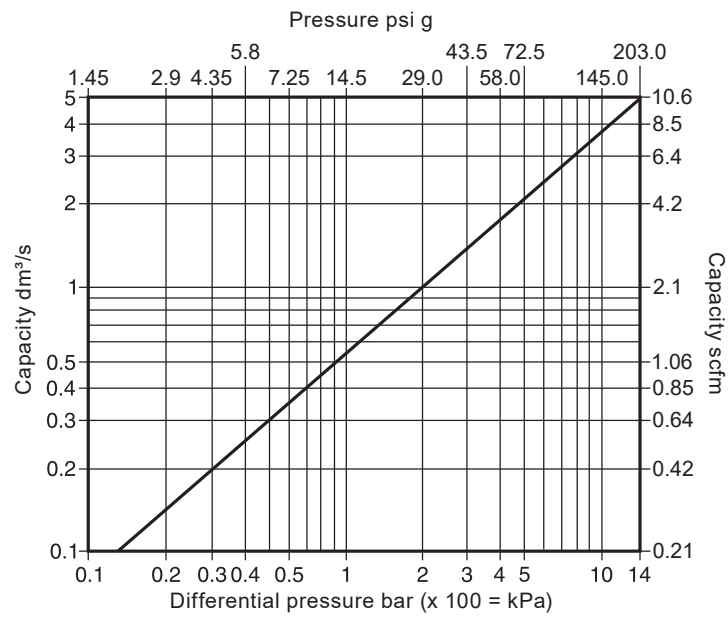
Size	A	B	C	D	E	F	G	H	Weight
1/2"	148	114	65	129	105	76	60	147	2.7
3/4"									



inches and lbs

Size	A	B	C	D	E	F	G	H	Weight
1/2"	5.82	4.48	2.55	5.07	4.13	2.99	2.36	5.78	5.95
3/4"									

Capacities



Safety information, installation and maintenance

For full details see the Installation and Maintenance Instructions (IM-P149-06) supplied with the product.

Disposal

This product is recyclable. No ecological hazard is anticipated with the disposal of this product providing due care is taken.

How to order

Example: 1 off Spirax Sarco ½" screwed BSP AE14 automatic air vent with SG iron body and Viton valve head.

Spare parts

The spare parts available are shown in solid outline. Parts drawn in a grey line are not supplied as spares.

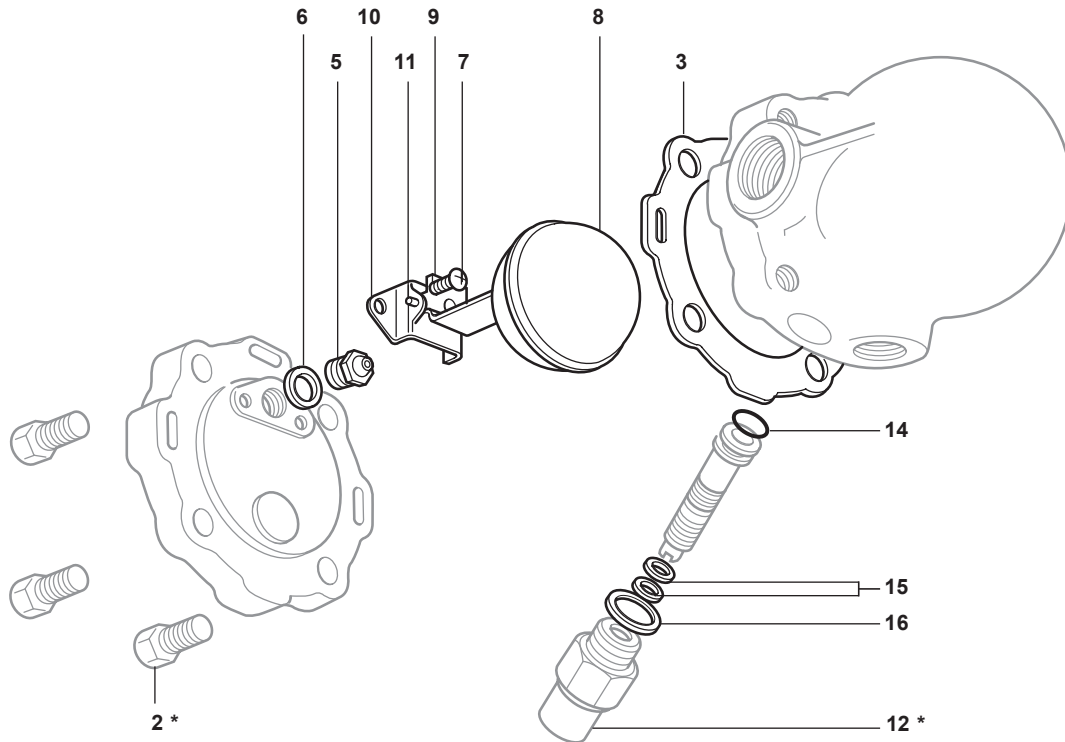
Available spares

Maintenance kit (Note: Item 9 is attached to item 8 when supplied for the AE14S)	3, 5, 6, 7 (2 off), 8, 9, 10, 11, 14, 15 (2 off), 16
Seal kit	3, 5 (EPDM), 14, 15 (2 off), 16
Valve head (not available for the AE14S) packet of 3 (Note: 1 off EPDM and Viton valve head is supplied to fit as required)	9



How to order spares

Always order spares by using the description given in the column headed 'Available spares' and state the size and type of automatic air vent.

Example: 1 - Maintenance kit for a Spirax Sarco ½" AE14ESV automatic air vent.



Recommended tightening torques

Item	Part	 or mm		N m	(lbf ft)
2 *	Cover bolts	17 A/F	M10 x 30	47 - 50	35 - 37
5	Main valve seat	17 A/F		50 - 55	33 - 40
7	Main valve assembly screws	Pozidrive	M4 x 6	2.5 - 3.0	1.8 - 2.2
12 *	Stop valve housing	21 A/F		30 - 35	22 - 26

* **Note:** Items 2 and 12 are not available as spares.